



Oakwood homes[®]
putting people first

Property brochure



LINTON COURT
1 CANTERBURY ROAD
WESTGATE
KENT
CT8 8JS

Price: £160,000

1 Bedroom

1 Reception

1 Bathroom

Off Street Parking

EPC C

Tenure LEASEHOLD
Council Tax A



birchington@oakwoodhomes.biz



01843 842233



www.oakwoodhomes.biz

Sales | Lettings | Property Management | Land Acquisition | Development Consultancy | New Homes | Mortgages | Conveyancing

Oakwood homes is a trading name of Oakwood homes Estate Agents Ltd whose registered office is at Stockwell House, Cecil Square, Margate, Kent CT9 1BD



The Property

Spacious one bedroom first floor flat located close to Westgate high street, Birchington and Margate, as well as offering easy access to the A299 and Thanet Way, perfect for commuting. Boasting a spacious lounge, good size bedroom, a modern style kitchen, bathroom and off street parking. This would be perfect for any first time buyers or investors. As you enter the property to the left you have the bathroom with a walk-in shower. Down the hall you are greeted with the lounge, with its large tilt and turn windows that allow a huge amount of natural light into the property giving it a light and breezy feel, with access to the kitchen, it makes it a perfect space for entertaining. Down the hall you have two good sized storage cupboards. You are then in the well sized bedroom - able to easily fit a double bed and bedroom set. Call Oakwood homes to book in for your viewing.

Location

Westgate on Sea remains today a stylish and elegant seaside town. It boasts two blue flag beaches, St Mildreds Bay and Westgate Bay, a range of beach facilities and of course those stunning Turner sunsets. At the heart of Westgate lies a small parade of independent shops some of which still possess the original Victorian canopied walkway. The mainline station provides access to London, approximately 1.5 hours travel time and the remaining Thanet towns including fashionable Margate which is less than 2 miles walk along the seafront. Thanet has long been a tourist destination and therefore a variety of recreational facilities are on hand including various water sports, a number of golf courses and stunning coastal and marshland walks. Westwood Cross provides further shopping and leisure opportunities, whilst approximately 14 miles distant lays the historic cathedral city of Canterbury.

Accommodation

Entrance Hallway	
Bathroom	6'2" (2.57m) x 5'7" (1.70m)
Lounge	14'05" (4.39m) x 12'5" (3.78m)
Kitchen	6'2" (1.88m) x 6'3" (1.91m)
Bedroom	10'2" (3.10m) x 14'3" (4.34m)

Hallway

Storage

Material information -

Lease length - 84 Years Remaining

Maintenance £512 for the year.

The vendor has advised us that their is no ground rent.

Broadband available.



birchington@oakwoodhomes.biz



01843 842233

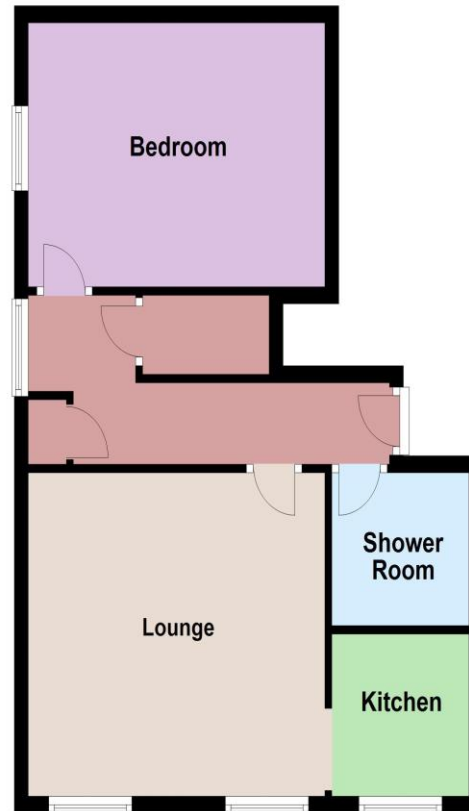


www.oakwoodhomes.biz



Oakwood homes[®]
putting people first

First Floor



© Copyright Oakwood homes - Not to be reproduced or copied without permission. All rights reserved.
Plan produced using PlanUp.

Property brochure

Key Features

- Off street parking
- One bedroom
- Ideal first time buy
- Great investment
- Modern style kitchen
- Good size lounge

Need a mortgage..?

For impartial advice, why not talk to one of our qualified mortgage advisors?

0800 035 0353



Agent's Note: None of the appliances or services have been tested and prospective purchasers should satisfy themselves as to their condition. BIR0023604/20240604/ATSDP



birchington@oakwoodhomes.biz



01843 842233



www.oakwoodhomes.biz



Sales | Lettings | Property Management | Land Acquisition | Development Consultancy | New Homes | Mortgages | Conveyancing
Oakwood homes is a trading name of Oakwood homes Estate Agents Ltd whose registered office is at Stockwell House, Cecil Square, Margate, Kent CT9 1BD