



**Le Mottais Farm Le Canibut, St. John**  
**£10,500,000**



# Le Mottais Farm Le Canibut

St. John, Jersey

Situated amidst almost 35 acres of agricultural and equine land in one of Jersey's most idyllic parishes, Le Mottais Farm provides a harmonious blend of traditional and modern living.

Tenure: Freehold

- Beautiful 35 acre country estate
- 4-bedroom main house with numerous reception rooms/areas
- 4-bedroom cottage & 1-bedroom apartment
- Bespoke wine room and hi-spec home cinema
- Leisure complex with indoor heated swimming pool, sauna, gym and changing facilities
- All-weather tennis court
- Sand school with stable block
- Ample garaging and parking for car lovers







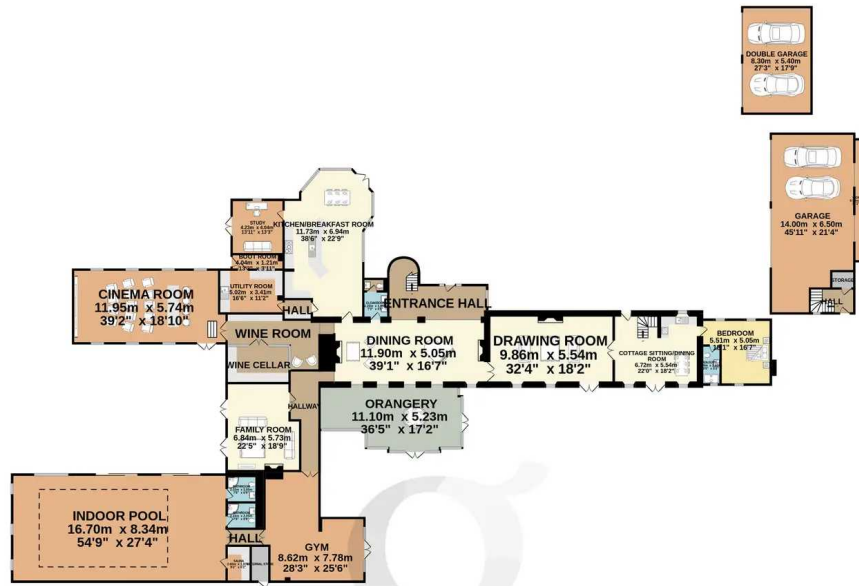




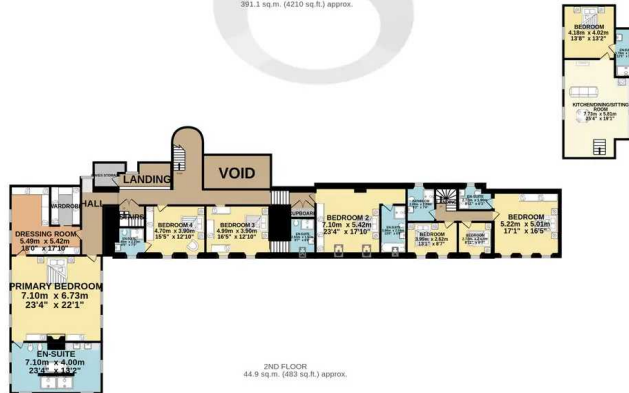




GROUND FLOOR  
883.7 sq.m. (9513 sq.ft.) approx.



1ST FLOOR  
391.3 sq.m. (4210 sq.ft.) approx.



2ND FLOOR  
44.9 sq.m. (483 sq.ft.) approx.

OFFICE/SNUG  
11.50m x 3.90m  
37'9" x 12'10"

TOTAL FLOOR AREA : 1319.8 sq.m. (14206 sq.ft.) approx.

Whilst every attempt has been made to ensure the accuracy of the floorplan contained here, measurements of doors, windows, rooms and any other items are approximate and no responsibility is taken for any error, omission or mis-statement. This plan is for illustrative purposes only and should be used as such by any prospective purchaser. The services, systems and appliances shown have not been tested and no guarantee as to their operability or efficiency can be given.  
Made with Metropix ©2024





## Gaudin & Co Ltd

Gaudin & Co, 22 Hill Street - JE2 4UA

01534 730341 • [sales@gaudin.je](mailto:sales@gaudin.je) •