



Windermere Crescent, Derriford, PL6 5HX

£500,000 FREEHOLD EPC: C



Windermere Crescent

Derriford, Plymouth, PL6 5HX

Luxurious 4-bed detached home with master en-suite, balcony, integrated kitchen appliances, double garage, driveway, landscaped gardens. Conveniently located near schools and amenities for family living.

Council Tax band: E

Tenure: Freehold

- Four Bedroom Detached Family Home on a Large Corner Plot
- Four Double Bedrooms
- Master En-suite
- Balcony off Main Bedroom
- Generous Kitchen with Integrated Appliances
- Open Lounge, Kitchen/Diner
- Double Garage & Driveway
- Landscaped Front & Rear Gardens
- Close to Schools, Hospitals & Amenities



Windermere Crescent

Derriford, Plymouth, PL6 5HX

Nestled on a spacious corner plot, this remarkable 4-bedroom detached family home offers a harmonious blend of comfort and luxury. Boasting four generously sized double bedrooms, including a master en-suite and a charming balcony off the main bedroom, this residence is designed with family living in mind.

Upon entering, you are greeted by a bright and airy ambience that flows seamlessly through the open lounge, kitchen/diner area. The kitchen, adorned with integrated appliances, is a treat for culinary enthusiasts, with ample space for dining and entertaining guests.

The property's practicality is further underscored by the presence of a double garage and driveway, providing convenient parking options for residents and visitors alike. The landscaped front and rear gardens add a touch of serenity to the outdoor space, creating a tranquil retreat within the estate.

Beyond the confines of this elegant abode, convenience abounds, with proximity to schools, hospitals, and an array of amenities ensuring that daily necessities are within easy reach. This location offers the utmost in accessibility and convenience.





DOUBLE GARAGE

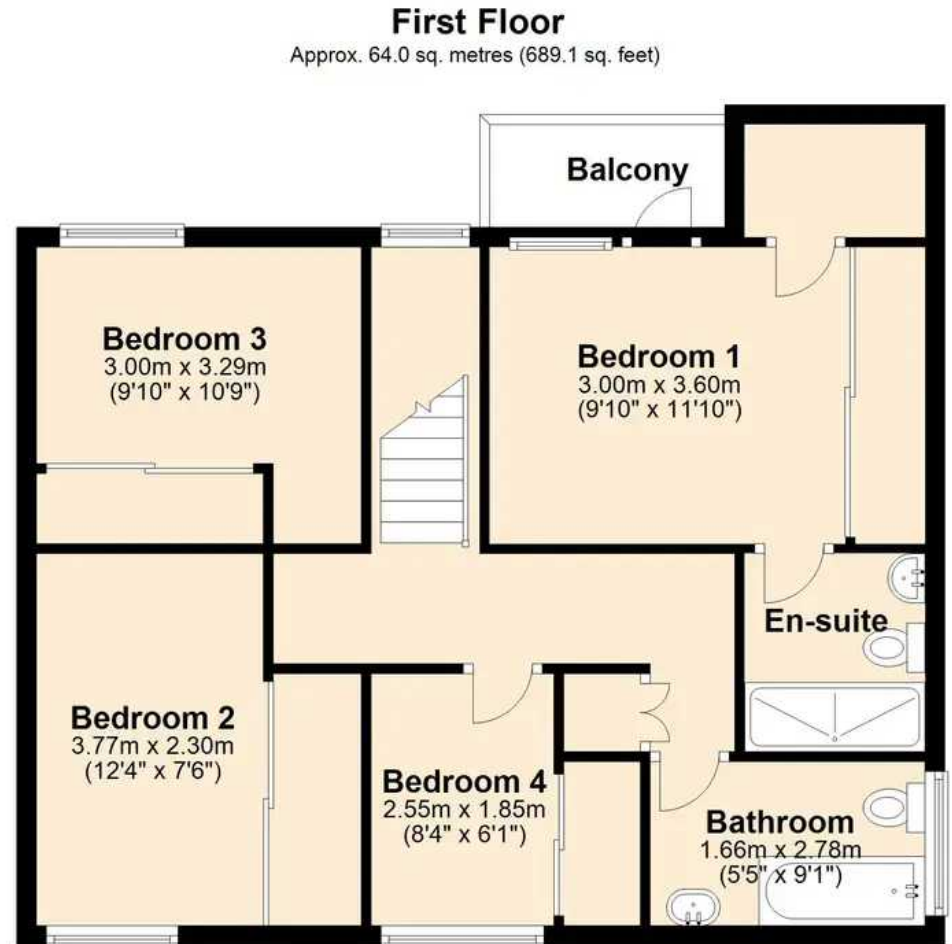
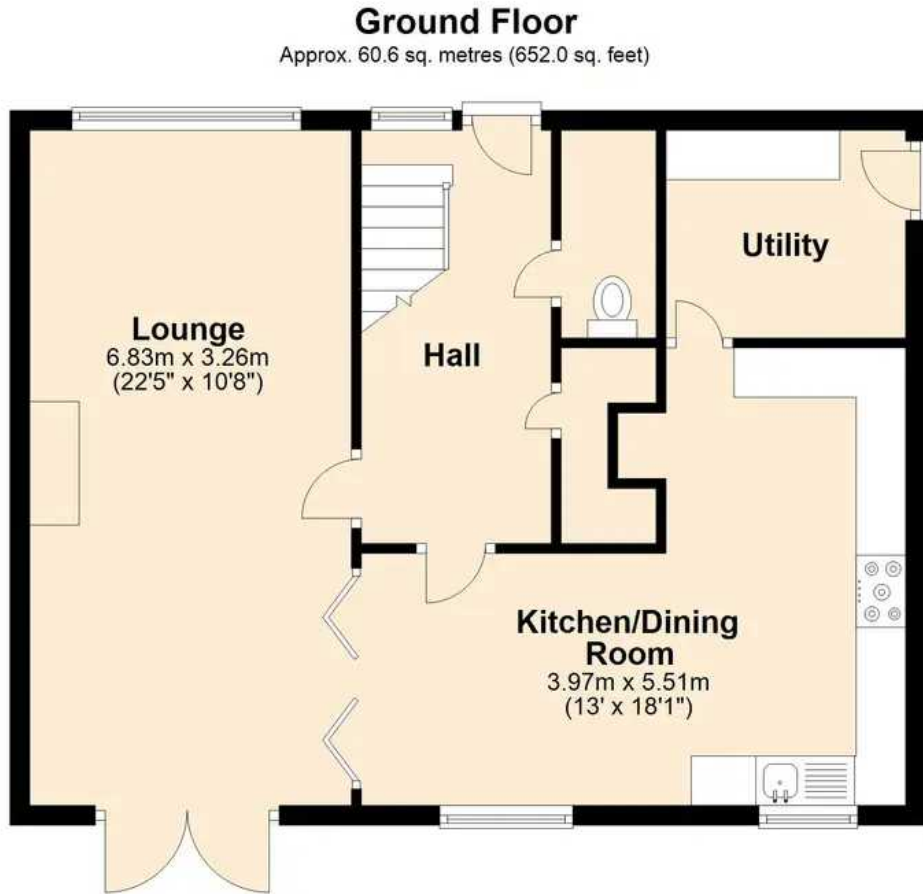
2 Parking Spaces

DRIVEWAY

4 Parking Spaces







Total area: approx. 124.6 sq. metres (1341.1 sq. feet)



Atwell Martin

Atwell Martin, 65 Southside Street – PL1 2LA

01752 202121

plymouthsales@atwell-martin.co.uk

plymouth.atwellmartin.co.uk/

Atwell Martin Plymouth endeavour to ensure the accuracy of property details produced and displayed. Please note that we have not tested any apparatus, equipment, fixtures, fittings or services and so cannot verify that they are connected, in working order or fit for purpose. It is imperative that the buyer of any property makes such checks, prior to purchase so as to satisfy themselves of the properties suitability for their purchase. .