



Flat 12, Seaview Court Hillfield Road, Selsey

Guide Price £155,000 Leasehold

Flat 12

Seaview Court Hillfield Road, Chichester

Presenting a charming 2-bedroom first-floor apartment in a sought-after retirement development. This maisonette boasts a spacious living room, ideal for relaxation and entertainment. Both bedrooms come equipped with ample storage space, ensuring a clutter-free environment. The modern kitchen features a larder cupboard, adding convenience to your culinary endeavours. The property also benefits from access to communal gardens, parking areas, living and laundering facilities adding ease and convenience to your daily life. You can also enjoy a glimpse of the sea from your window.

Conveniently located and well-maintained, this retirement apartment offers a peaceful retreat for those seeking comfort and tranquillity in their living space.

Council Tax band: C

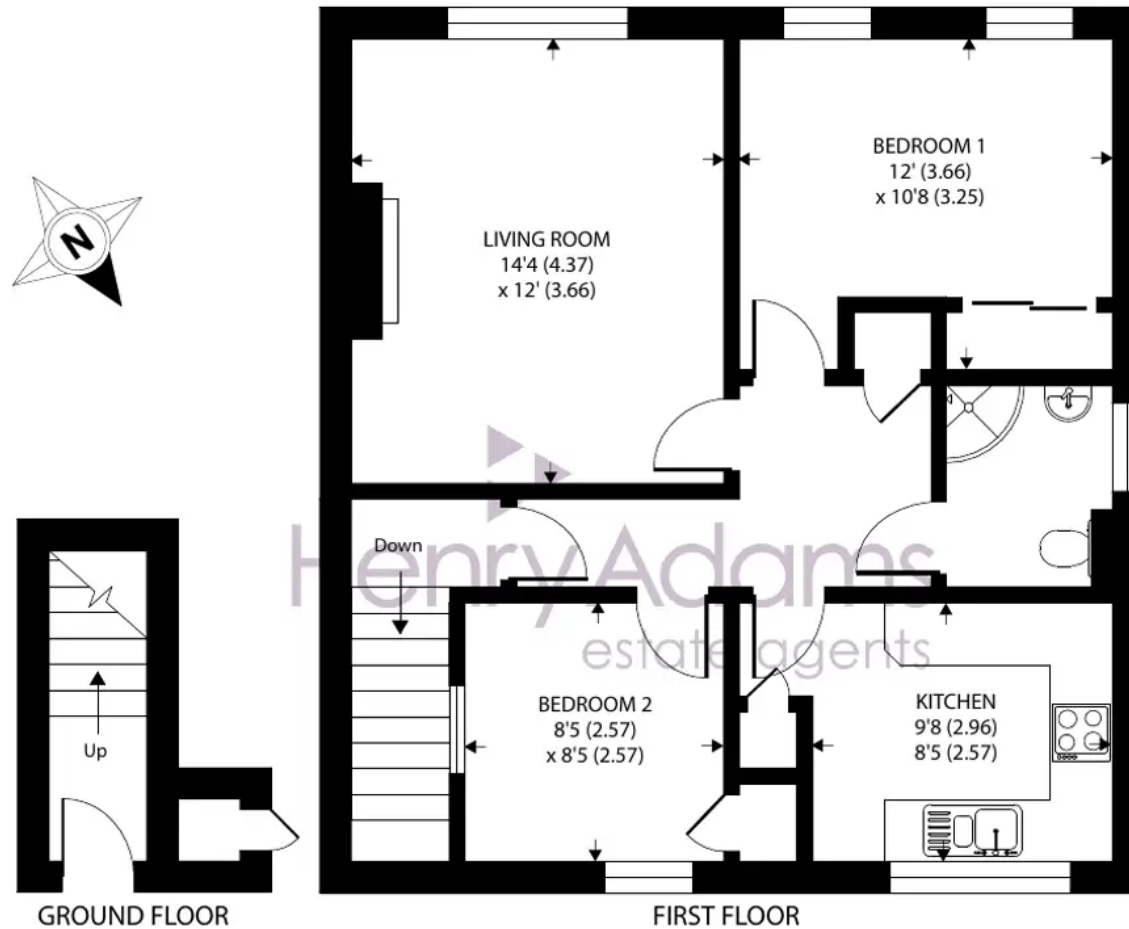
Tenure: Leasehold

EPC Energy Efficiency Rating: C

EPC Environmental Impact Rating: D

- First Floor Retirement Apartment
- Two Bedrooms both with Storage Space
- Good Sized Living Room
- Sea Glimpse
- Modern Well Presented Kitchen with Larder Cupboard
- Communal Gardens and Parking Areas





Seaview Court, Hillfield Road, Selsey, Chichester, PO20

Approximate Area = 680 sq ft / 63.2 sq m

Outbuilding = 4 sq ft / 0.3 sq m

Total = 684 sq ft / 63.5 sq m

For identification only - Not to scale



Floor plan produced in accordance with RICS Property Measurement Standards incorporating International Property Measurement Standards (IPMS2 Residential). © ntechcom 2024. Produced for Henry Adams. REF: 1136603



Henry Adams - Selsey

Henry Adams LLP, 122 High Street, Selsey - PO20 0QE

01243 606789

selsey@henryadams.co.uk

www.henryadams.co.uk/

Agents Note - Our particulars are for guidance only and are intended to give a fair overall summary of the property. They do not form part of any contract or offer, and should not be relied upon as a statement or representation of fact. Measurements, areas and distances are approximate only. Photographs may include lifestyle shots and pictures of local views. No undertaking is given as to the structural condition of the property, or any necessary consents or the operating ability or efficiency of any service, system or appliance. Please ask if you would like further information, especially before you travel to the property.