

22 ASTWOOD MEWS

South Kensington SW7 4DE

MEWS OFFICE FOR SALE

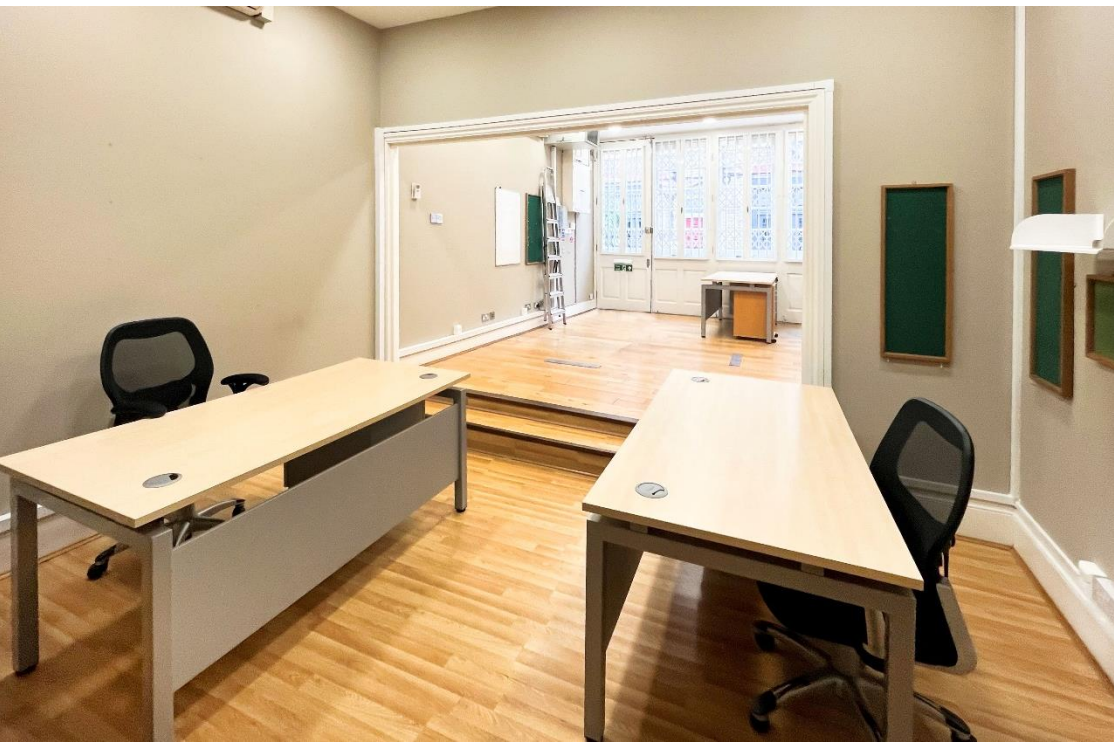
570 sq ft (53 sq m)

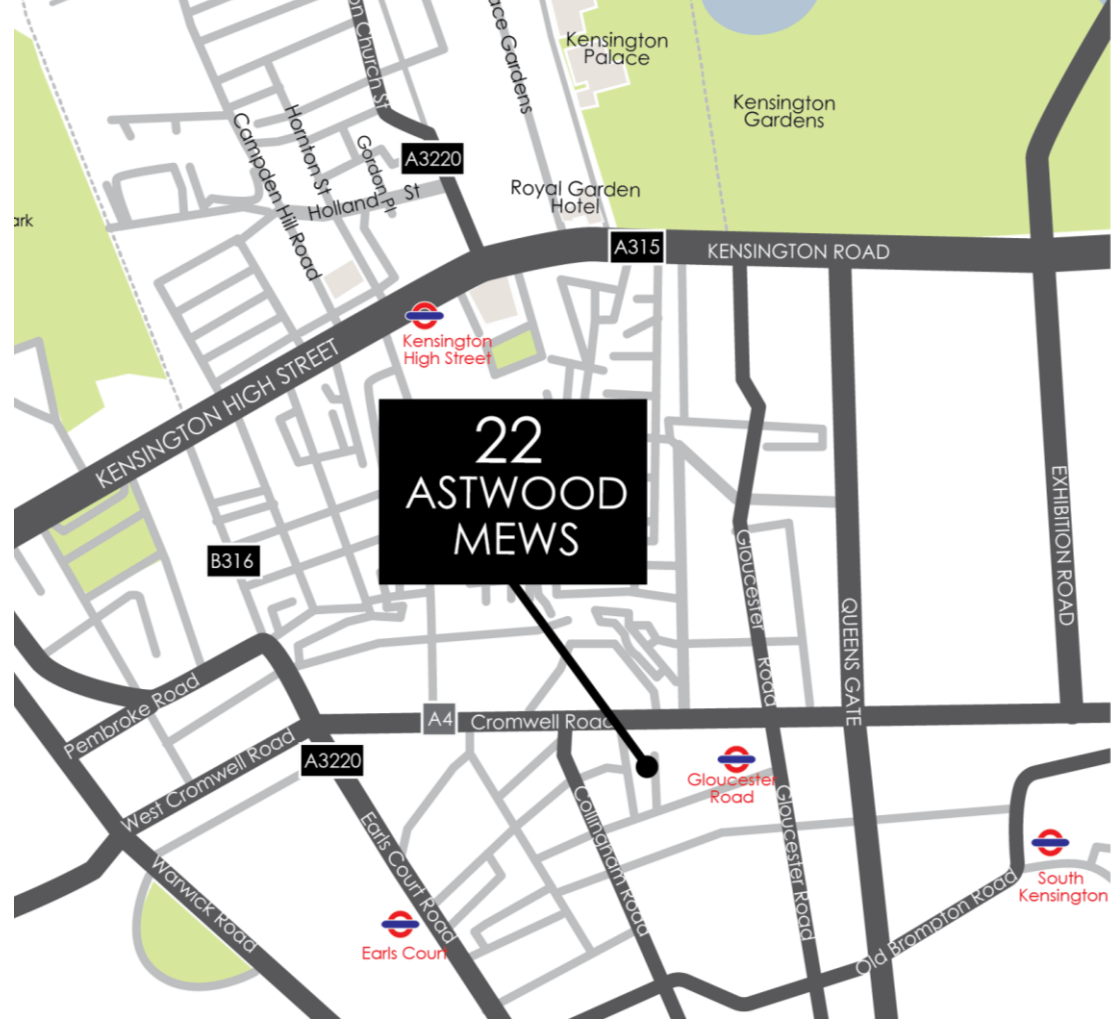
A rare ground floor mews office



DESCRIPTION

Astwood Mews is a traditional London Mews with a mixture of commercial and residential occupiers. The offices occupy the entire ground floor of this attractive building. The space is predominantly open-plan and fitted with air conditioning units (not tested). There is approximately 100 sq ft of high-level mezzanine storage space at the rear of the office. A separate kitchenette and WC are also provided within the space.





LOCATION

Astwood Mews is close to the junction of Courtfield Road which is situated just to the south of Cromwell Road (A4).

TRANSPORT

Gloucester Road tube station
(Piccadilly, District & Circle lines)
Is just a 4-minute walk

Earls Court tube station
(Piccadilly & District lines)
Is just a 9-minute walk

South Kensington tube station
(Piccadilly, District & Circle lines)
Is just a 12-minute walk

AMENITIES

- Solid oak floor
- Air conditioning
- Storage space
- Plaster ceilings & modern lighting
- Fitted kitchenette
- WC

FLOOR AREA

570 sq ft (53 sq m) NIA, 642 sq ft (59.7 sq m) gross internal

GUIDE PRICE

£795,000 the property has not been elected for VAT
The property is held on a long leasehold interest
of 999 years at a peppercorn rent.

RATES

£12,849.25 per annum approx.2024/25
to be confirmed with the local authority.

EPC

Rated E (115)

CONTACT

Giles Harker
gharker@frostmeadowcorft.com

Tristan David
tdavid@frostmeadowcroft.com
www.frostmeadowcroft.com

**frost
meadowcroft**
020 8748 1200