



Le Petit Champeaux, La Rue Du Coin, St. Clement
£2,775,000

BROADLANDS
FINDING YOU A HOME SINCE 1972

Le Petit Champeaux, La Rue Du Coin

St. Clement, Jersey

Tucked away on a quiet green lane the house is superbly located for those that like peace and quiet, yet the convenience of living a short drive to St Helier and all the amenities that it provides.

- Stunning, detached modern home
- 6 Bedrooms, 5 bathrooms
- Large eat in kitchen, separate lounge and playroom
- Full of design features such as floor to ceiling glass and vaulted ceilings
- Situated on a quiet green lane in rural St Clement
- Ample parking, double garage, and electric gate
- 8 Verges of land
- Private and quiet yet a short drive to the beach and St Helier
- Sole Agent
- Contact Harry Trower on harry@broadlandsjersey.com



Le Petit Champeaux, La Rue Du Coin

St. Clement, Jersey

Introducing this stunning, detached modern home situated on a quiet green lane in rural St Clement. This exceptional 6-bedroom, 5-bathroom property offers a luxurious and contemporary living experience.

The eat-in kitchen features the latest high-end appliances, sleek countertops, and ample storage space. Adjacent to the kitchen, you will find a separate playroom, ideal for children or a home office.

The design features throughout this property are well thought out and complement the property. From the floor-to-ceiling glass windows that flood the rooms with natural light to the vaulted ceilings that create a sense of openness and grandeur, every detail has been meticulously crafted with exceptional attention to detail.

Outside, this property has ample parking, a double garage, and an electric gate for convenient access. Set on an impressive 8 verges of land, the property offers exclusivity and privacy. Despite its rural location, it is just a short drive away from stunning beaches and the vibrant town of St Helier.

For those seeking a luxurious and contemporary home in a serene location, this property is an absolute must-see. Contact us today to arrange a viewing.





Living

Fantastic living spaces with excellent use of architectural features such as vaulted ceilings and large windows. In total you have a large kitchen/reception room, separate lounge and snug.

Sleeping

The property has 6 bedrooms in total. Plenty of room for the entire family and guests.

Outside

With excellent patios and garden the property also has a large field that is currently a stunning orchard.

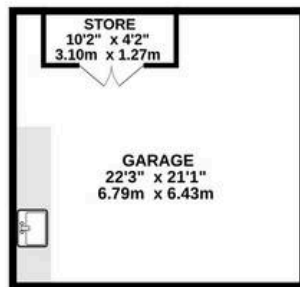
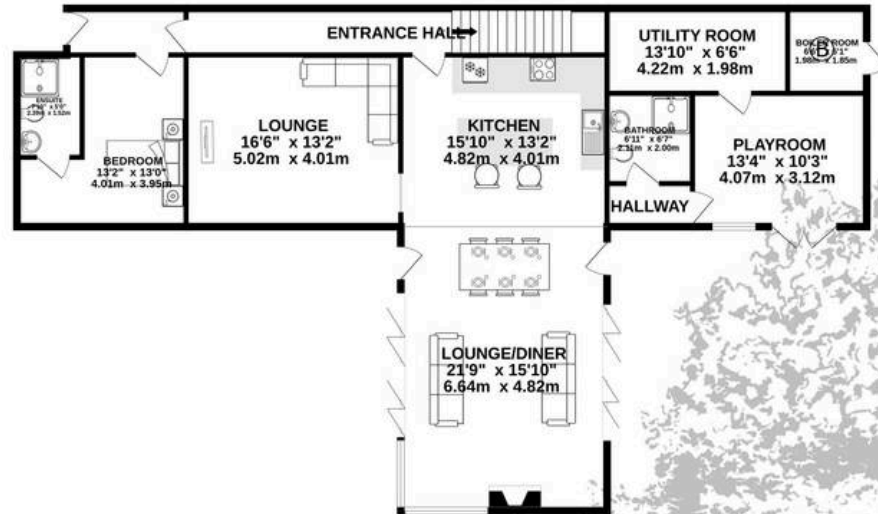
Services

All Mains, no gas. Electric heating throughout.

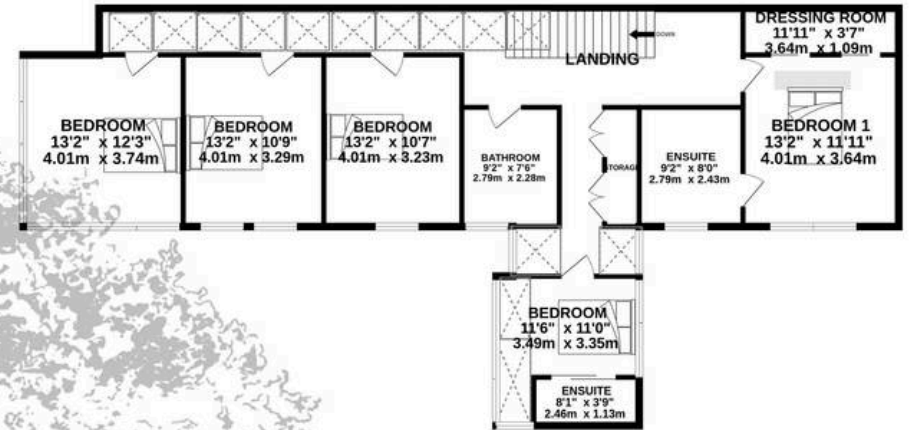




GROUND FLOOR
1885 sq.ft. (175.1 sq.m.) approx.



1ST FLOOR
1266 sq.ft. (117.6 sq.m.) approx.



TOTAL FLOOR AREA : 2831sq.ft. (263.0 sq.m.) approx.

Whilst every attempt has been made to ensure the accuracy of the floorplan contained here, measurements of doors, windows, rooms and any other items are approximate and no responsibility is taken for any error, omission or mis-statement. This plan is for illustrative purposes only and should be used as such by any prospective purchaser. The services, systems and appliances shown have not been tested and no guarantee as to their operability or efficiency can be given.

Made with Metropix ©2025



Broadlands

Broadlands Estates, Library Place - JE2 3NL

01534 880770 • enquiries@broadlandsjersey.com • www.broadlandsjersey.com/

BROADLANDS

FINDING YOU A HOME SINCE 1972