



Melbourne | Hundon Road, Kedington, Suffolk, CB9 7QT



Features

- SPACIOUS & VERSATILE SINGLE STOREY HOME
- FOUR BEDROOMS
- SELF-CONTAINED ANNEXE
- PLOT OF APPROX 0.7 ACRES
- GARDENS & PADDOCK
- EDGE OF VILLAGE LOCATION
- OVER 2700 SQ FT OF ACCOMMODATION

This substantial and extremely versatile single-storey home boasts over 2700 sq ft of living space, including a self-contained annexe. Located on the edge of a charming village, the property sits on a generous plot of approximately 0.7 acres, including gardens & paddock.



THE PROPERTY

This substantial and extremely versatile single-storey home boasts over 2700 sq ft of living space, including a self-contained annexe. Located on the edge of a charming village, the property sits on a generous plot of approximately 0.7 acres, including gardens & paddock.

As you approach the property, you are greeted by a substantial driveway providing ample off-road parking. The entrance hall immediately showcases the impressive size of this home. To the right, there are three double bedrooms, including a master bedroom with an ensuite bathroom. An additional shower room serves the remaining two bedrooms.

The heart of the home is the kitchen/diner, an impressive space enhanced by skylights that allow an abundance of natural light. Adjacent to the kitchen is the generous sitting room, which flows seamlessly into the sunroom. From the sunroom, you can access the self-contained annexe, offering ample living space with a sitting room, bedroom, shower room, utility room, and office.

Step outside to discover a beautiful and spacious garden, perfect for outdoor activities and relaxation. The property also includes an attached paddock of approximately 0.75 acres, ideal for those seeking a connection with nature or additional outdoor space.

This home represents a rare opportunity to acquire a property of such expansive space and versatility. Contact us today to arrange a viewing and explore all that this remarkable home has to offer.





Bychoice
ESTATE AGENTS

ENTRANCE HALL

BEDROOM ONE

19' 2" x 16' 9" (5.86m x 5.13m)

ENSUITE

BEDROOM TWO

17' 9" x 13' 6" (5.42m x 4.14m)

BEDROOM THREE

16' 2" x 13' 7" (4.95m x 4.15m)

SHOWER ROOM

KITCHEN/DINER

23' 11" x 19' 0" (7.3m x 5.81m)

SITTING ROOM

25' 9" x 11' 8" (7.85m x 3.58m)

SUN ROOM

12' 7" x 10' 1" (3.85m x 3.09m)

ANNEXE:

SITTING ROOM

16' 2" x 13' 6" (4.93m x 4.13m)

BEDROOM

15' 6" x 9' 9" (4.74m x 2.99m)

SHOWER ROOM

UTILITY ROOM

13' 6" x 6' 10" (4.13m x 2.09m)

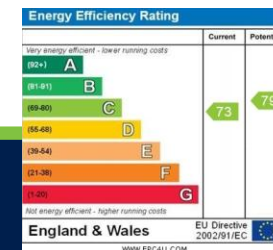
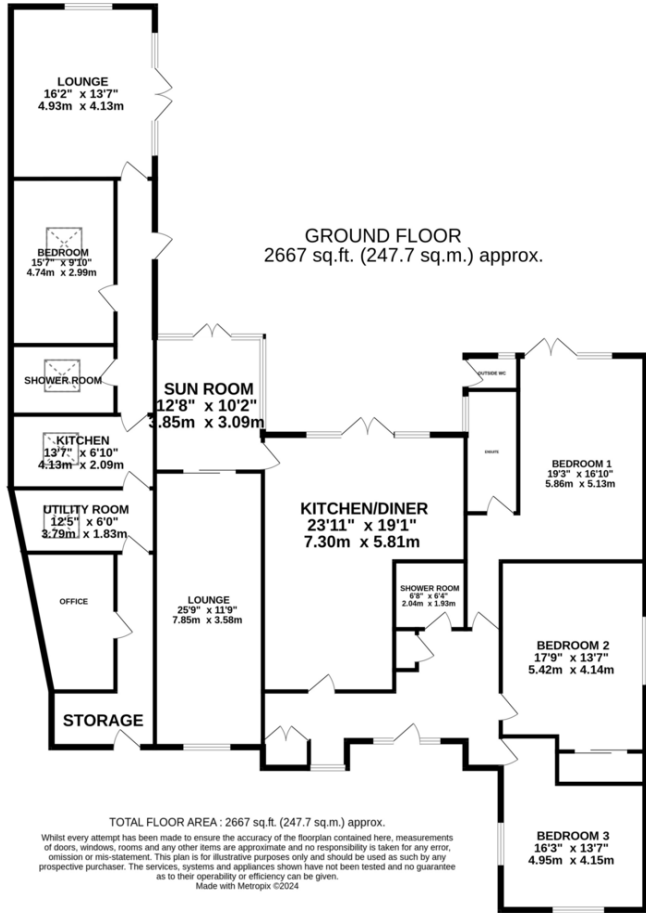
OFFICE



Bychoice



Bychoice



Bychoice
ESTATE AGENTS

Haverhill Office
27b High Street, Haverhill, Suffolk, CB9 8AD | Tel: 01440 768919
E-mail: haverhill@bychoice.co.uk
bychoice.co.uk

Agents Note: Whilst every care has been taken to prepare these sales particulars, they are for guidance purposes only. All measurements are approximate and for general guidance purposes only and whilst every care has been taken to ensure their accuracy, they should not be relied upon and potential buyers are advised to recheck the measurements. B2304





Bychoice
ESTATE AGENTS