



Unit 21, Bayton Road Industrial Estate,

**SIDDALL JONES**

## Unit 21, Bayton Road Industrial Estate

Cronal Road, Coventry, CV7 9GA

### Secure Yard Premises with Self-Contained Office Accommodation

**0.85 Acres**  
(0.34 Hectares)

- Easy Access to A444 and M6
- Secure Site
- Part-Concreted
- Office Accommodation

# Unit 21, Bayton Road Industrial Estate, Crondal Road, Coventry, CV7 9GA

## Description

The site is broadly rectangular in shape and bounded on all sides by palisade fencing.

Access is via large secure gates from Crondal Road.

The surface is a mixture of concrete pad and compacted hardcore, which is level throughout.

The office accommodation provides reception area, kitchen, WC facilities and several cellular office spaces / meeting rooms.

## Location

The property is located on Crondal Road, in the popular Bayton Road Industrial Estate.

The location provides ease of access to the A444 and Junction 3 of the M6 motorway, which are both located approximately 1 mile west of the location.

Coventry town centre is located 5 miles south and Birmingham city centre approximately 20 miles west.

## Accommodation

Office: 1,360 ft<sup>2</sup> (126.35 M<sup>2</sup>) approx.

Site Area: 0.85 acres (0.35 Hectares) or thereabouts.

## Terms

Price on application.

## VAT

All prices quoted are exclusive of VAT, which we understand is payable.

## Business Rates

Rateable Value: £34,000

Rates Payable: £17,000 per annum approx.

## Services

We understand all mains services are available to the site.

The agent has not tested the suitability of the connections and recommends that all interested parties carry out their own investigations as to their suitability.

## Planning Use

We understand that the site has planning permission granted under Use Classes B1 and B8.

## Legal Costs

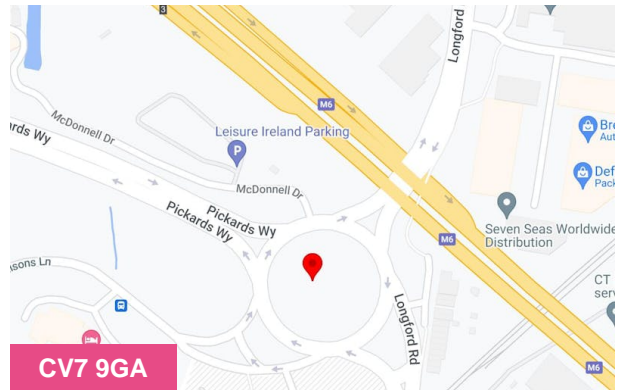
Both parties to bear their own legal and surveyor's fees incurred during the transaction.

## Energy Performance

Available upon request from the agent.

## Anti-Money Laundering

The successful applicant will be required to provide two forms of ID to satisfy anti-money laundering protocols.



## Summary

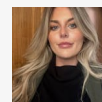
<b>Available Size</b>	0.85 Acres
<b>Business Rates</b>	N/A
<b>Service Charge</b>	N/A
<b>EPC Rating</b>	Upon enquiry

## Viewing & Further Information



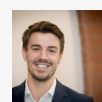
### Edward Siddall-Jones

0121 638 0500 | 07803 571 891  
edward@siddalljones.com



### Sophie Froggatt

0121 638 0500 | 07842013854  
sophie@siddalljones.com



### Ryan Lynch

0121 638 0800 | 07710022800  
ryan@siddalljones.com



### Scott Rawlings

0121 638 0500 | 07745521743  
scott@siddalljones.com

## Viewing

Strictly via prior appointment with the sole agent Siddall Jones on 0121 638 0500