



58 Tangier Road, Baffins

Portsmouth

Offers in Region of £285,000





58 Tangier Road

Baffins, Portsmouth

Ideally located, this large three bedroom house in Tangier Road, Baffins is a great family home. It's located within walking distance to Baffins Pond and also to many local amenities including local shops, schools and parks so would make a great purchase for those of you looking to move into the area.

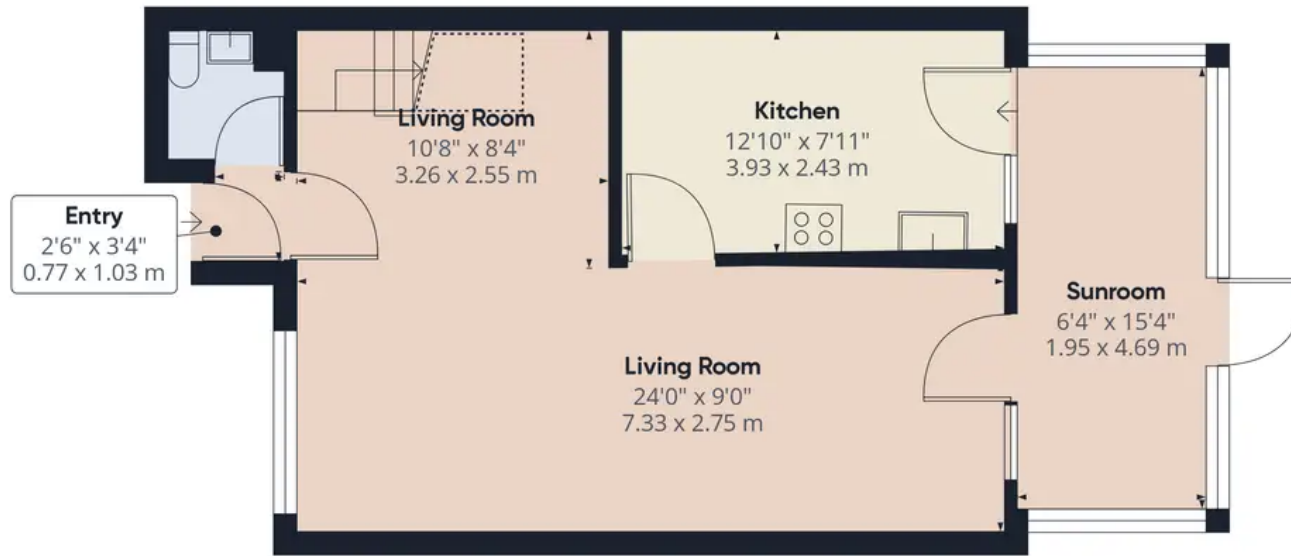
The entrance vestibule is light with a Cloakroom off and then a doorway which leads through to a good size open plan Lounge Dining Room with stairs off. We love the space on offer here rarely seen in this price range.

Next comes the Kitchen. Fitted with a range of wall and base cabinets this has been thought out very well with a door giving you access into the Conservatory and rear South facing garden. On the first floor are three bedrooms off a large landing. Two good sized double rooms and a further large single room all of which have fitted wardrobes giving you that much needed extra storage space. The Shower Room is modern but still provide you with scope to design your own.

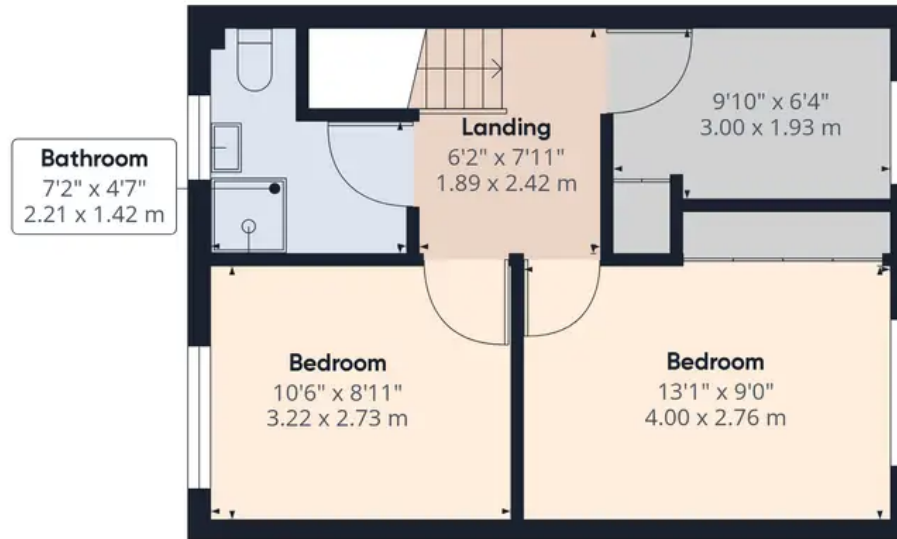
Outside is where this property really shines! You have The garden itself is South facing and a great size and a safe place for little ones to play in. You'll also find storage shed here too. In addition to this there is vehicular access to the rear of the property via a shared access road.

With no forward chain we think this is a wonderful family home, and once decorated to your own taste would be ready for you to enjoy.





Ground Floor



Floor 1

Approximate total area⁽¹⁾

923.69 ft²

85.81 m²

Reduced headroom

12.41 ft²

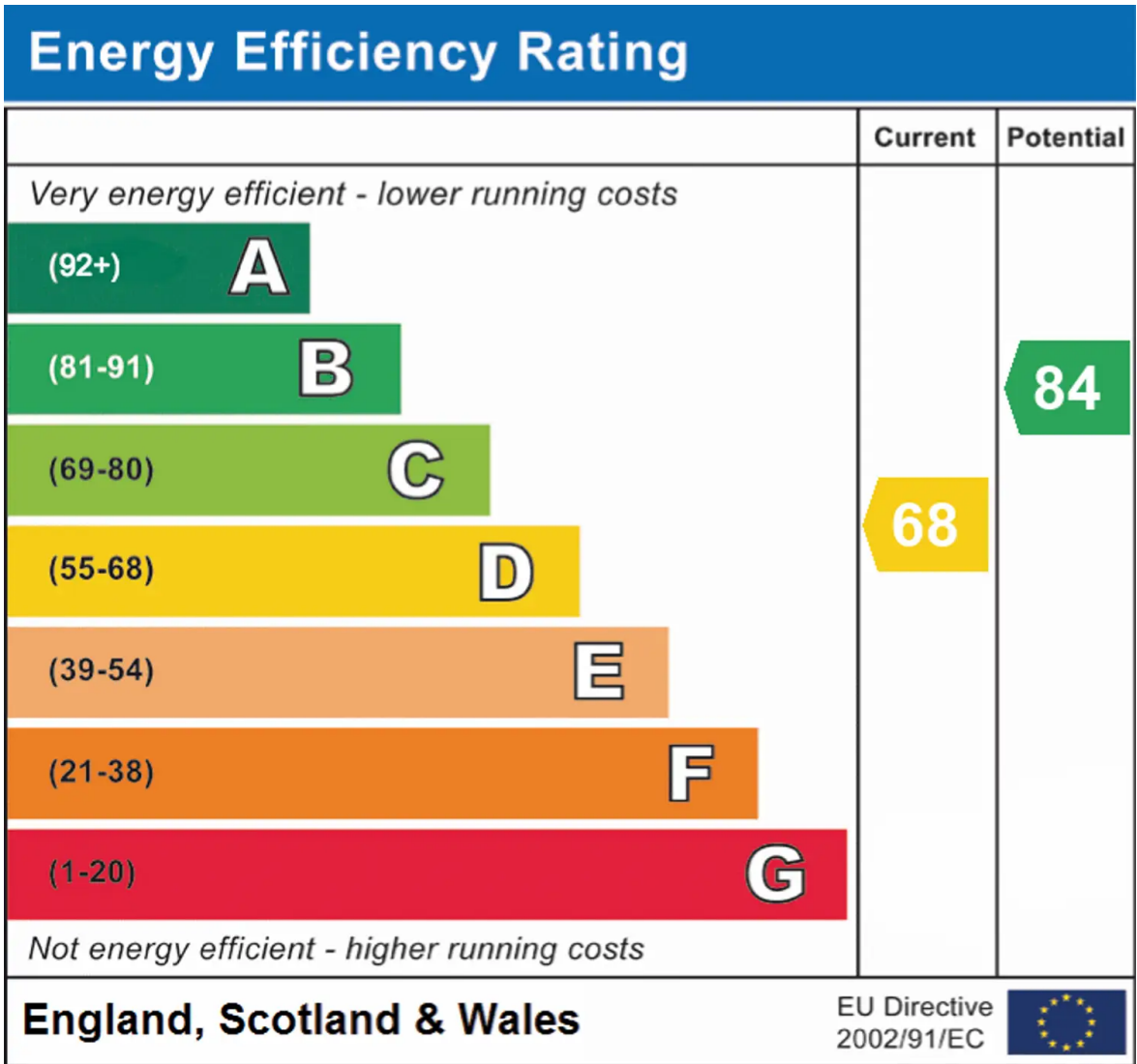
1.15 m²

(1) Excluding balconies and terraces

☐ Reduced headroom
(below 1.5m/4.92ft)

While every attempt has been made to ensure accuracy, all measurements are approximate, not to scale. This floor plan is for illustrative purposes only.

GIRAFFE360



Chinneck Shaw

Bridge House, Milton Road, Portsmouth – PO3 6AN

023 9282 6731

hello@chinneckshaw.co.uk

www.chinneckshaw.co.uk/

Chinneck Shaw, Bridge House, Milton Road, PO3 6AN Consumer Protection from Unfair Trading Regulations 2008: These details are for guidance only and complete accuracy cannot be guaranteed. If there is any point which is of particular importance, verification should be obtained. The do not constitute a contract or part of a contract. All measurements are approximate. No guarantee can be given with regard to planning permissions or fitness for purpose. No apparatus, equipment, fixture or fitting has been tested. Items shown in the photographs are NOT necessarily included. Interested Parties are advised to check availability and make an appointment to view before travelling to see a property.