



20 Atheling Road, Hythe
£649,950


ANTHONY JAMES
PROPERTIES



20 Atheling Road

Hythe, Southampton

Set on one of Hythe Village's most requested roads, this modern detached home features a wealth of pleasing features and truly must be viewed to be fully appreciated. The generous accommodation benefits from four well-proportioned bedrooms, a bathroom and an ensuite shower room. Further to this there is an entrance porch, a pleasing reception hall with partially galleried landing, a spacious kitchen/dining room with utility, a lounge, an office and a WC. Outside of the property you will find a large driveway allowing plenty of off-road parking, an integral garage with electric door, a well-maintained rear garden and a summer house. Pleasing additional features include UPVC double glazing, gas central heating, oak furnishings (doors, door frames and skirting) and neutral decoration.

Location

Atheling Road is one of the most requested roads in Hythe, favoured for being within walking distance of the historic Hythe Village and waterfront. Within the village there are a wide selection of amenities including pubs, restaurants, shops, a Waitrose and a medical centre. From here, the surrounding areas are easily accessible via bus services, or even from the Ferry at Hythe Pier, which runs a regular ferry service to Town Quay in Southampton. The New Forest National Park is less than two miles away and there are various recreational centres in the surrounding areas including a golf centre with driving range at Dibden.

Atheling Road is one of the most requested roads in



1 Southward House
Dibden Purlieu SO45 4PT



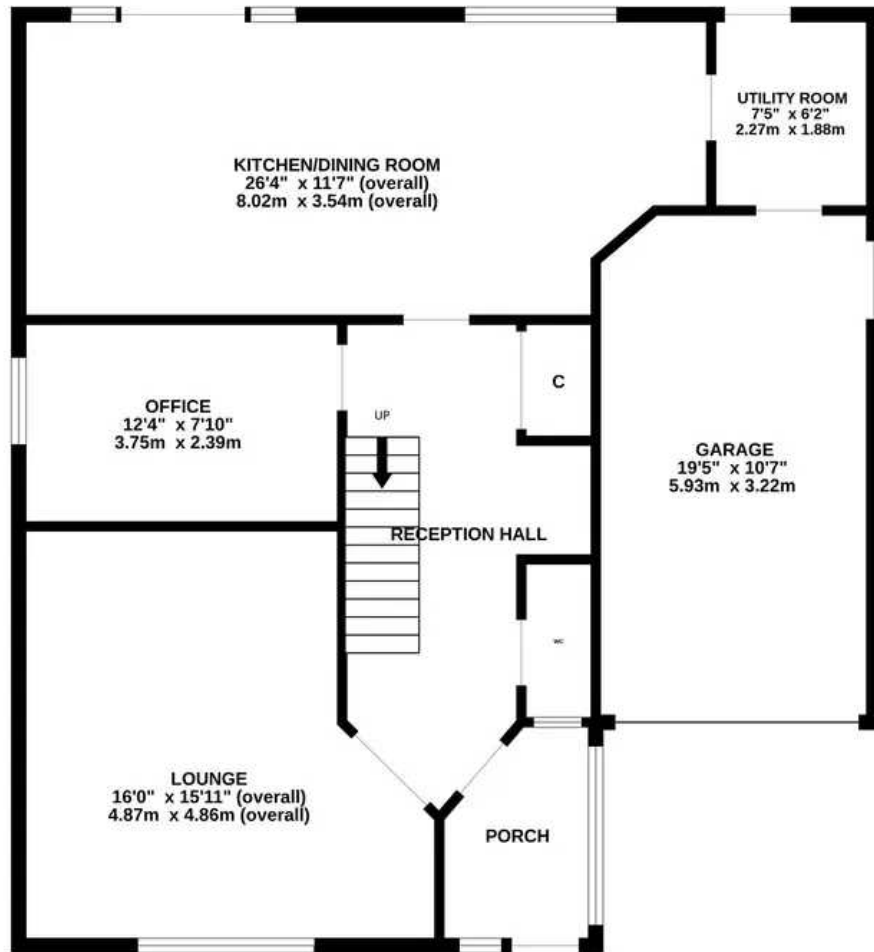
T: 02380 844405

info@anthonyjamesproperties.co.uk

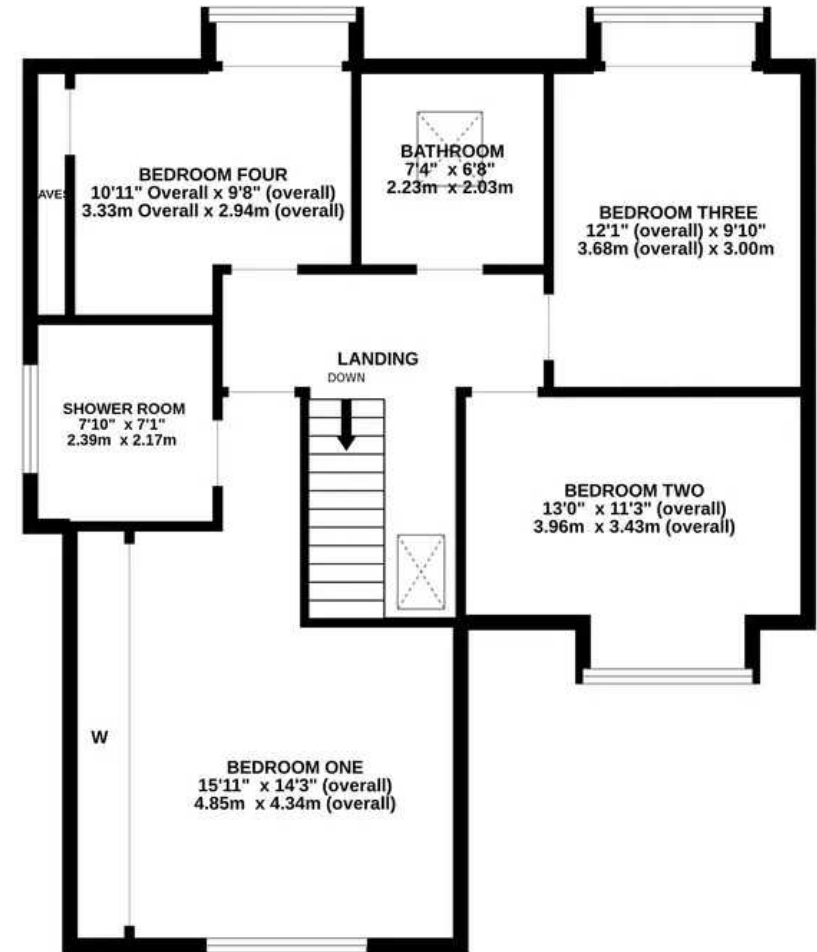
Within the village there are a wide selection of amenities including pubs, restaurants, shops, a Waitrose and a



GROUND FLOOR
1060 sq.ft. (98.5 sq.m.) approx.



1ST FLOOR
839 sq.ft. (77.9 sq.m.) approx.



TOTAL FLOOR AREA : 1899 sq.ft. (176.4 sq.m.) approx.

Whilst every attempt has been made to ensure the accuracy of the floorplan contained here, measurements of doors, windows, rooms and any other items are approximate and no responsibility is taken for any error, omission or mis-statement. This plan is for illustrative purposes only and should be used as such by any prospective purchaser. The services, systems and appliances shown have not been tested and no guarantee as to their operability or efficiency can be given.