

# UNIT G06, METROPOLITAN WHARF

70 WAPPING WALL, WAPPING, E1W 3SS

---

FOREST  
REAL ESTATE

**TO LET**

**3,248 SQ FT**

## Spectacular Leisure Space Within An Impressive Grade II Listed Victorian Former Warehouse

### Key Features

- Private Street Level Entrance
- Communal Cycle Storage
- Seperate Male & Female Showers & Changing Facilities
- Ground Floor Private Reception
- 2.7m Ceiling Height
- Air Conditioning
- Short Walk From Wapping Overground Station
- Communal Break Out Area & Riverside Terrace

**Unit G06, Metropolitan Wharf, 70 Wapping Wall  
Wapping, E1W 3SS**





## Description

Our client is looking for a gym / personal training studio to occupy this superb self contained leisure unit set across ground and basement levels.

The space was most recently occupied by a gym operator and therefore the existing fixtures and equipment can remain if required.

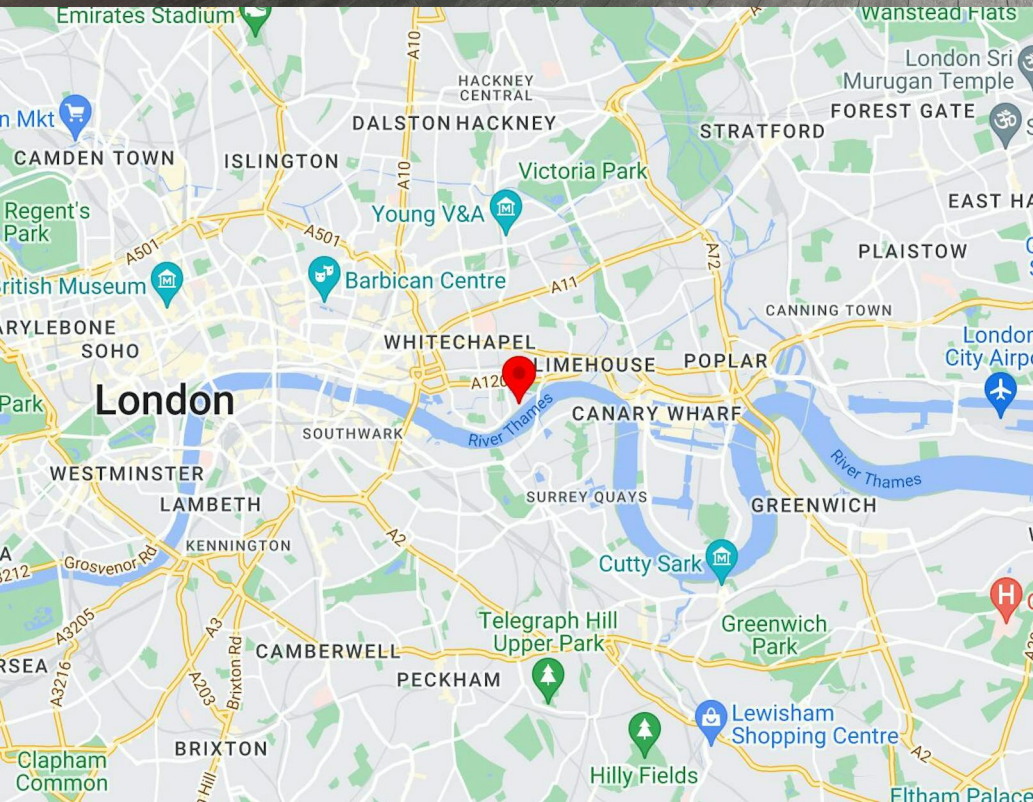
A future occupier will benefit from an estimated 1,000 office occupiers within the building as well as the surrounding businesses and local residents.

The basement has been sub-divided to create two areas, however this could be one larger open plan area.

## Location

Located in Metropolitan Wharf on Wapping Wall, this area benefits from a large residential catchment and is surrounded by numerous offices and developments.

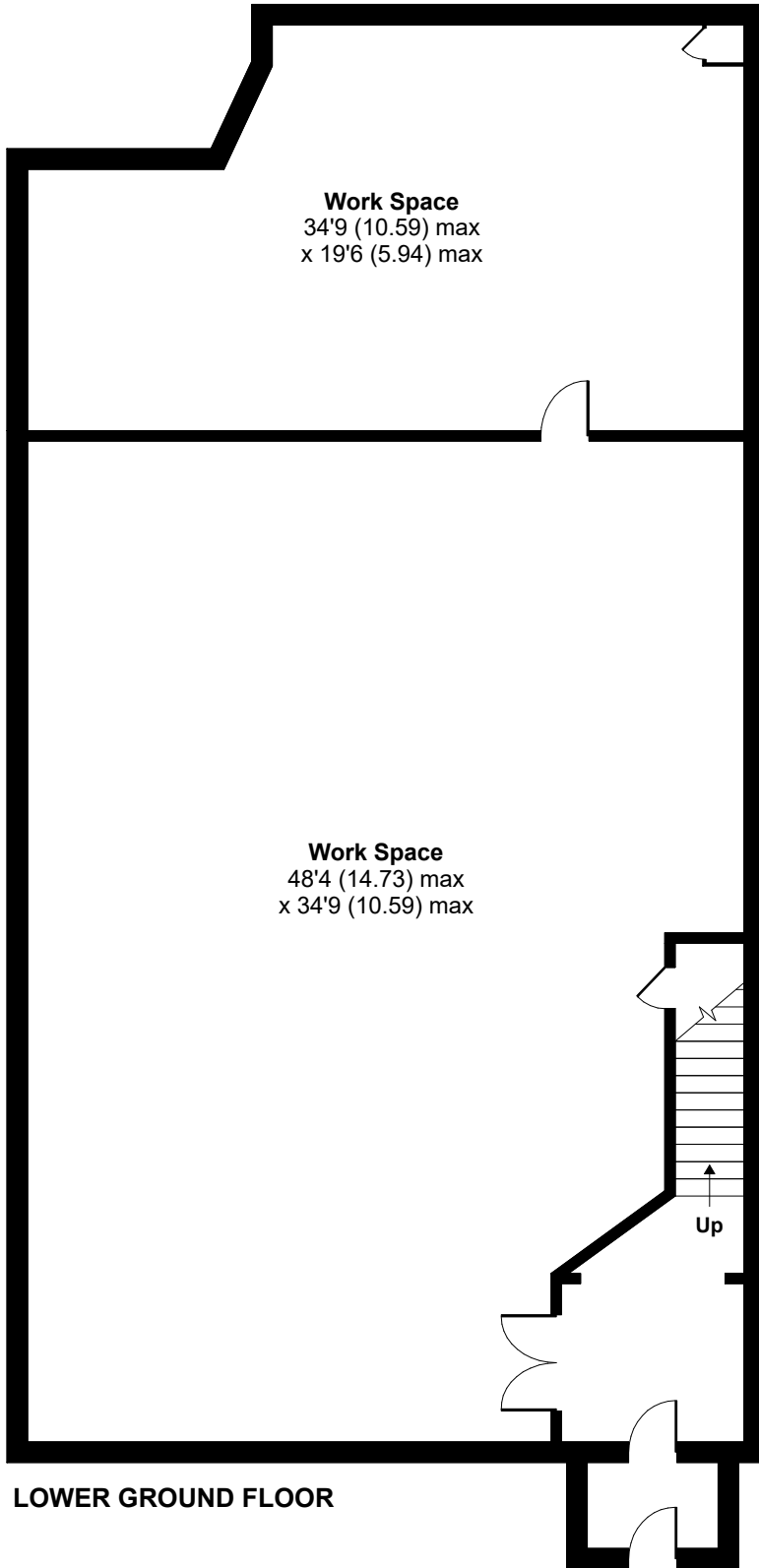
Wapping Overground Station is within a 5 minute walk and well-connected to London's transport network, being only one stop from the DLR at Shadwell, two stops from the Jubilee Line at Canada Water and two stops from the Elizabeth Line at Whitechapel.



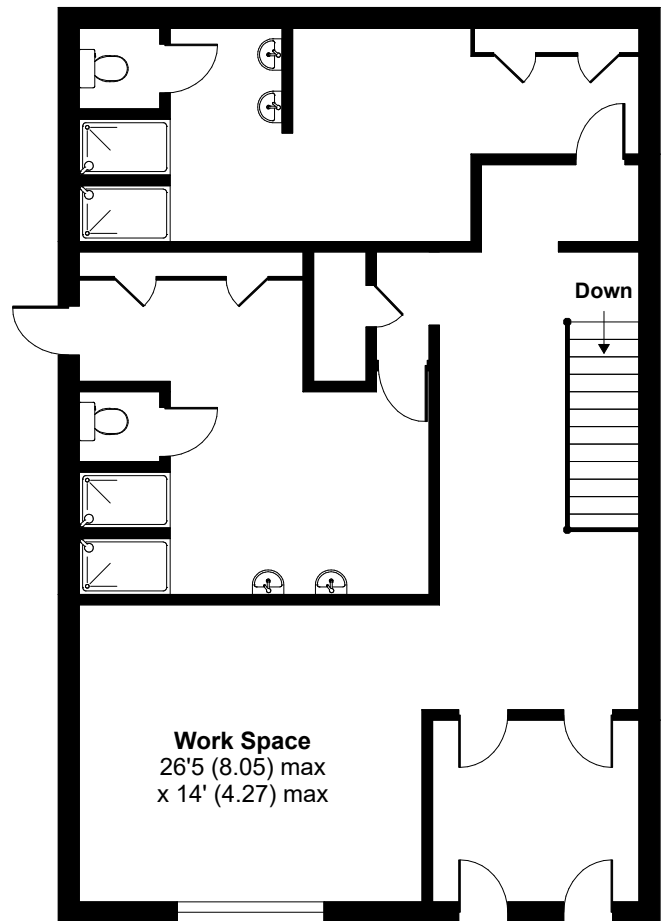
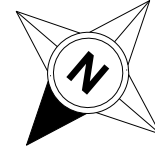


# Unit G06, Metropolitan Wharf

For identification only - Not to scale



LOWER GROUND FLOOR



GROUND FLOOR

# Availability

The accommodation comprises the following areas:

Name	sq ft	sq m
Ground	1,005	93.37
Basement	2,243	208.38
<b>Total</b>	<b>3,248</b>	<b>301.75</b>
<b>Lease</b>	New Lease	
<b>Rent</b>	£68,500 per annum	
<b>Rates</b>	£9,481 per annum	
<b>Service Charge</b>	£16,240 per annum	
<b>VAT</b>	Applicable	
<b>EPC</b>	C (75)	

# Contact

## Zach Forest

020 3355 1555 | 07890 209 397  
zach@forestrealestate.co.uk

## Casey Okin

0203 355 1555 | 07391 453 076  
casey@forestrealestate.co.uk

## North West London Office

1 Bridge Lane, London, NW11 0EA  
020 3355 1555

## Watford Office

1a Local Board Road, Watford, WD17 2JP  
01923 911 007

## East London Office

18a Victoria Park Square, London, E2 9PB  
020 3370 4470

[www.forestrealestate.co.uk](http://www.forestrealestate.co.uk)  
[info@forestrealestate.co.uk](mailto:info@forestrealestate.co.uk)

**Unit G06, Metropolitan Wharf, 70 Wapping Wall**  
Wapping, E1W 3SS

**F O R E S T**  
REAL ESTATE

The above information contained within this brochure is subject to contract. These particulars are for general information only and do not constitute any part of an offer or contract. All statements contained therein are made without responsibility on the part of the vendors or lessors and are not to be relied upon as statement or representation of fact. Intending purchasers or lessees must satisfy themselves, by inspection, or otherwise, as to the correctness of each of the statements of dimensions contained in these particulars. Generated on 10/06/2024