



# Keswick

Offers in the region of **£385,000**

67 Wordsworth Street, Keswick, CA12 4BZ

A cottage style two bedroom period terrace house located on a side street within easy walking distance of Keswick town centre and equally suitable as a primary home, recreational second home or for lucrative holiday letting.

## Quick Overview

Cottage style period terrace house

Side street location

Easy walking distance to Keswick town centre

Two double bedrooms

Living room and sitting room

Rear yard with vehicular access



Property Reference: KW0365



Living Room



Dining Room



Kitchen



Bedroom One

## Accommodation

### Ground Floor:

#### Entrance Vestibule

#### Entrance Hall

With radiator.

#### Living Room

With front bay window, slate fireplace with electric fire, radiator.

#### Sitting Room

With period style fireplace and electric fire, radiator, built in cupboard, under stairs cupboard.

#### Kitchen

With fitted base and wall units, sink unit, ceramic wall tiling, plumbing for washing machine, radiator.

### First Floor:

#### Landing

With built in cupboard.

#### Bedroom One

With radiator, built in cupboard.

#### Bedroom Two

With radiator.

#### Shower Room

With WC, vanity wash hand basin, shower cubicle, radiator.

#### WC

With WC, wash hand basin.

#### Outside:

Small front forecourt, paved rear yard with vehicular access and shrubbed border, adjoining store room.

#### Services

Mains water, electricity, gas and drainage. Gas central heating.

#### Tenure

Freehold.

#### Council Tax

Band D.

#### Viewing

By appointment with Hackney and Leigh's Keswick office.

#### Directions

From Keswick town centre proceed onto Penrith Road then turn right immediately after Greta Street onto Wordsworth Street.

#### Price

Offers in the region of £385,000.



Living Room



Rear Elevation

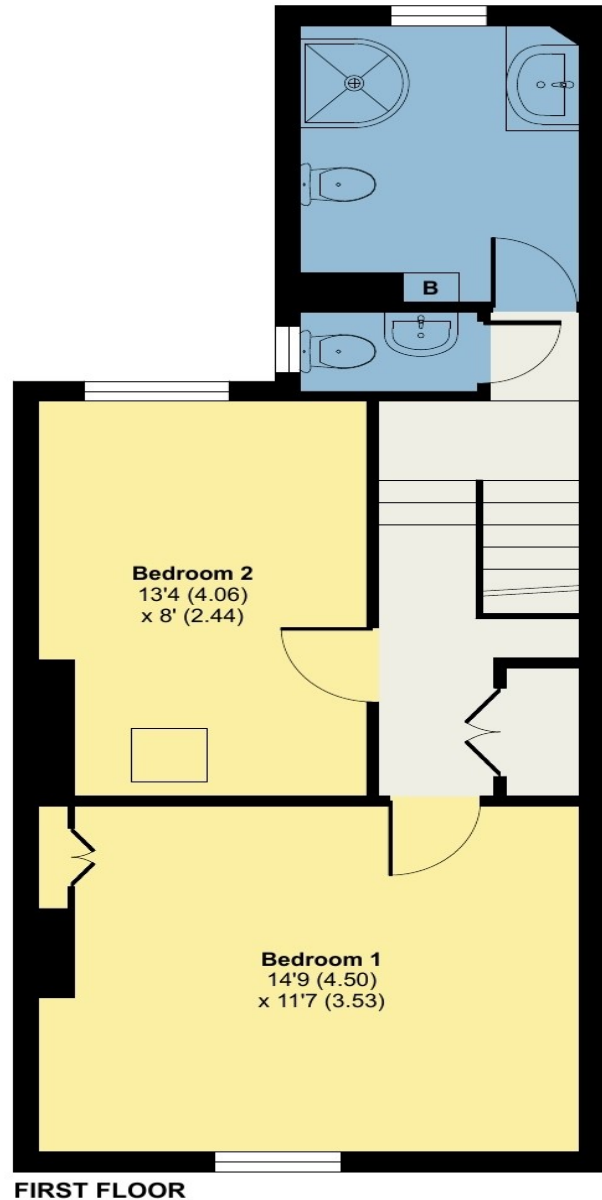
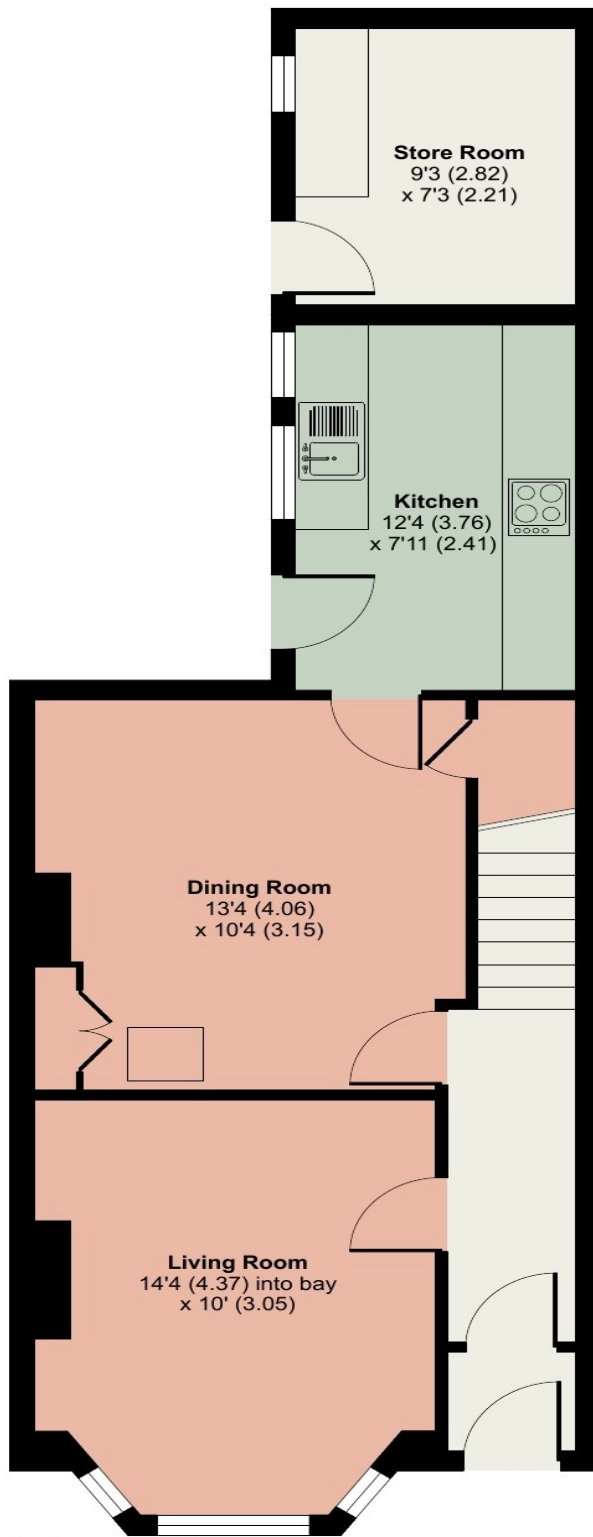
# Wordsworth Street, Keswick, CA12

Approximate Area = 959 sq ft / 89 sq m

Store Room = 72 sq ft / 6.6 sq m

Total = 1031 sq ft / 95.6 sq m

For identification only - Not to scale



Floor plan produced in accordance with RICS Property Measurement Standards incorporating International Property Measurement Standards (IPMS2 Residential). © n̄checom 2024. Produced for Hackney & Leigh. REF: 1136732

All permits to view and particulars are issued on the understanding that negotiations are conducted through the agency of Messrs. Hackney & Leigh Ltd. Properties for sale by private treaty are offered subject to contract. No responsibility can be accepted for any loss or expense incurred in viewing or in the event of a property being sold, let, or withdrawn. Please contact us to confirm availability prior to travel. These particulars have been prepared for the guidance of intending buyers. No guarantee of their accuracy is given, nor do they form part of a contract. \*Broadband speeds estimated and checked by <https://checker.ofcom.org.uk/en-gb/broadband-coverage> on 10/06/2024.

Request a Viewing Online or Call 01768 741741