



Willersley Avenue

Sidcup
DA15 9EG

Freehold

4 bedroom semi detached house
Easy access to local shops, schools and Sidcup station
Chain Free
Off street parking to front and garage
Conservatory
Kitchen/breakfast room
Ideal family home



FULL DESCRIPTION

This 4 bedroom semi detached house is offered chain free and we feel would make a great family home.

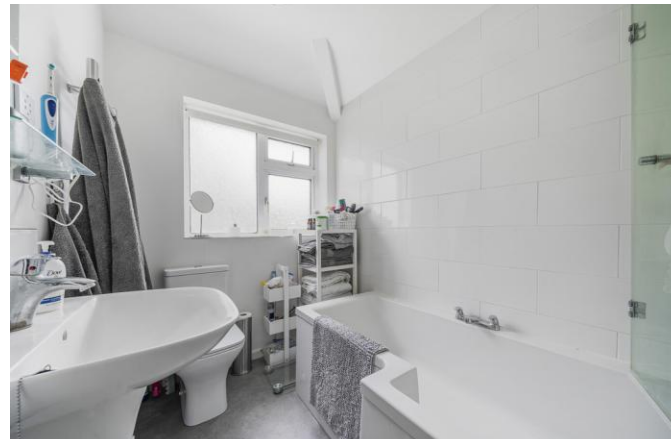
The property sits in a popular location that offers easy access to Sidcup train station, shops, parks and schools.

The house briefly comprises of: entrance porch, entrance hall, lounge, dining room, a spacious kitchen, downstairs w.c and then on the first floor are 4 bedrooms and a family bathroom.

Externally there is off street parking to the front, a garage and a rear garden.

Directions

From our Sidcup office turn right into Station Road and proceed straight across the traffic lights into Halfway Street. At the mini roundabout turn right into Willersley Avenue. Closest Stations: Sidcup (0.67 mi) New Eltham (1.26 mi) Albany Park (1.27 mi) Closest Schools: Days Lane Primary School (0.29 mi) Chatsworth Infant School (0.34 mi) Chislehurst and Sidcup Grammar School (0.63 mi)



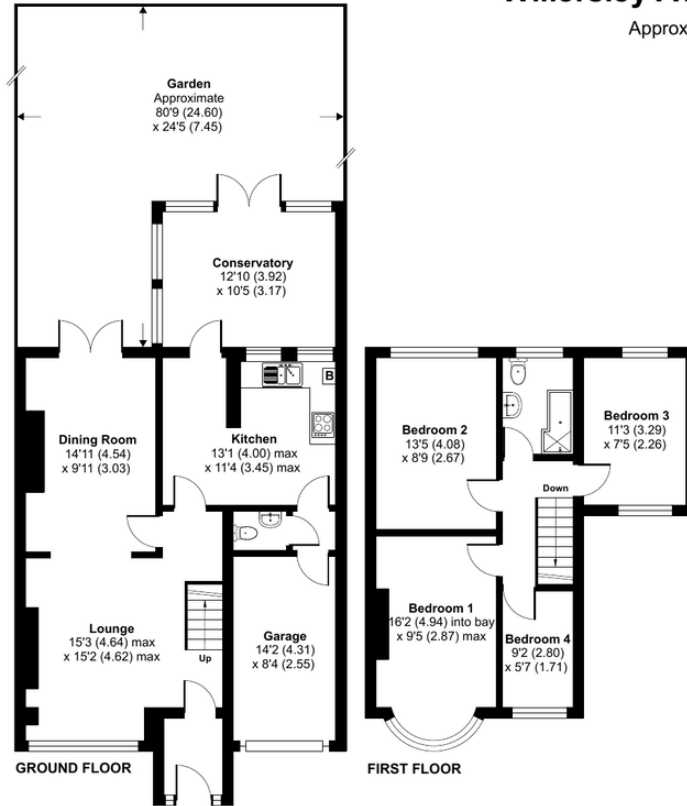


Local Authority
Council Tax Band
EPC Rating

Bexley London Borough Council
E
D

Willersley Avenue, Sidcup, DA15

Approximate Area = 1259 sq ft / 116.9 sq m
Garage = 111 sq ft / 10.3 sq m
Total = 1370 sq ft / 127.2 sq m
For identification only - Not to scale



Floor plan produced in accordance with RICS Property Measurement Standards incorporating International Property Measurement Standards (IPMS2 Residential). © ntrhcom 2024. Produced for Drewery. REF: 1137565

Drewery Property Consultants
128 Station Road
Sidcup
Kent
DA15 7AF

Contact
020 8269 6605
info@drewery.co.uk
www.drewery.co.uk

Agents Note: Whilst every care has been taken to prepare these particulars, they are for guidance purposes only. All measurements are approximate and are for general guidance purposes only and whilst every care has been taken to ensure their accuracy, they should not be relied upon and potential buyers/tenants are advised to recheck the measurements.