





Guide Price £1,495,000 Freehold

Beautifully designed home completed in 2023 with remainder of Global Homes Warranty

 3  4  3 

- ▶ Large entrance hall with cloakroom and storage cupboard
- ▶ Sitting room with wood burner and French doors to terrace
- ▶ Stunning bespoke handmade kitchen
- ▶ Dining room with bi-folds opening to patio terrace
- ▶ Four double bedrooms, main with fitted wardrobes and en-suite
- ▶ Private garden with large patio terrace and south westerly facing
- ▶ Detached double garage with room over and en-suite
- ▶ Ample driveway parking

Nestled in a quiet private lane, this beautifully designed 4-bedroom detached house epitomises luxury living. Built in 2023 and boasting the remainder of the Global Homes Warranty, this beautifully designed home presents a perfect blend of modern architecture and high-quality finishes.

Upon entering, you are greeted by a spacious entrance hall, complete with a cloakroom and under stairs storage cupboard. The sitting room exudes warmth with a wood burner, while French doors lead out to a charming terrace, perfect for alfresco dining and entertaining. Additionally, a versatile office or playroom offers flexibility to suit your needs.

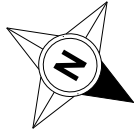
The heart of this home lies in the bespoke handmade kitchen, featuring a central island, quartz work surfaces, and top-of-the-line Fisher and Paykel fridge / freezer, Falcon range cooker and Bosch dishwasher. The dining room seamlessly flows outdoors through bi-fold doors, opening up to a patio terrace that beckons relaxation. Meanwhile, the underfloor heating throughout the ground floor ensures comfort and luxury.

Upstairs, four double bedrooms, including the main with fitted wardrobes and an en-suite shower room, await. The electric underfloor heating and natural stone tiles in the bathrooms add a touch of indulgence to every-day living.

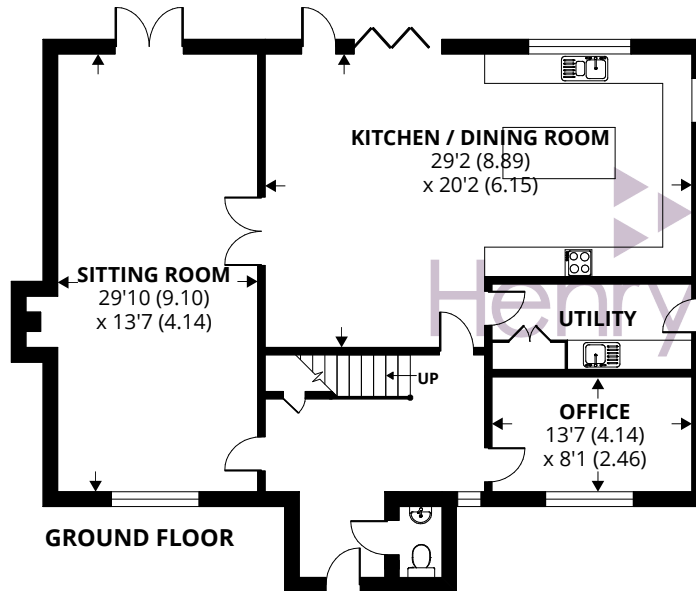
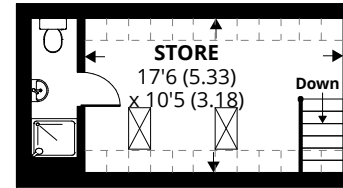
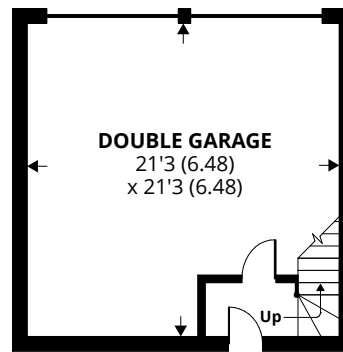




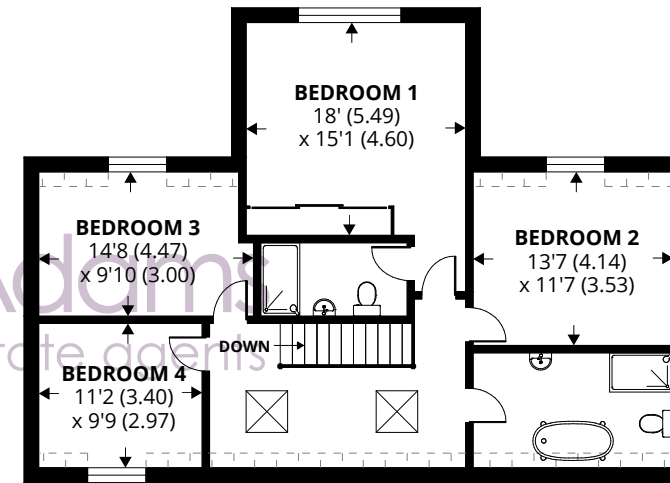




Denotes restricted head height



GROUND FLOOR



FIRST FLOOR

Approximate Area = 2360 sq ft / 219.2 sq m
Limited Use Area(s) = 107 sq ft / 9.9 sq m
Garage = 456 sq ft / 42.4 sq m
Outbuilding = 169 sq ft / 15.7 sq m
Total = 3092 sq ft / 287.2 sq m

For identification only - Not to scale



Agents Note - Our particulars are for guidance only and are intended to give a fair overall summary of the property. They do not form part of any contract or offer, and should not be relied upon as a statement or representation of fact. Measurements, areas and distances are approximate only. Photographs may include lifestyle shots and pictures of local views. No undertaking is given as to the structural condition of the property, or any necessary consents or the operating ability or efficiency of any service, system or appliance. Please ask if you would like further information, especially before you travel to the property.

Garden

Outside, a private garden with a large south westerly-facing patio terrace, a limestone patio, and an electric gate entrance, offer a serene sanctuary. A detached double garage, with additional accommodation potential and ample driveway parking, cater to every convenience. The surrounding garden, adorned with a laurel hedge, rhododendrons, roses, and foxgloves, completes this picturesque abode, making it a truly enchanting space to call home.



