

Marine House, Mount Stuart Square,

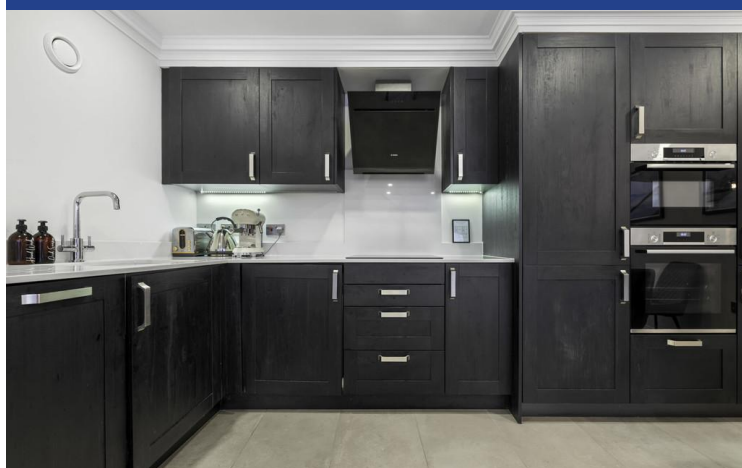
Cardiff Bay, Cardiff, CF10 5DP



Estate Agents and
Chartered Surveyors

Asking Price Of

£239,950



One Bedroom Apartment



Property Description

****IDEAL FIRST TIME PURCHASE* HIGH SPECIFICATION THROUGHOUT* GRADE II LISTED BUILDING**** MGY are delighted to offer a redevelopment of a Grade II Listed building, situated in the heart of Cardiff Bay. This sympathetically designed scheme has retained much of the existing classical features from this 1850's building, combined with modern contemporary design. The spacious one bedroom, ground floor duplex apartment comprises of entrance hall to bedroom, bathroom and large mezzanine/study. Stairway leading to unique open plan lounge/kitchen/diner. The property further benefits from sash windows and a video entry intercom system. Additional bike storage. Ideal first time purchase.

Tenure Leasehold

Council Tax Band D

Floor Area Approx 775 sq ft

Viewing Arrangements
Strictly by appointment

ENTRANCE HALL

Entered via wooden door. Oak flooring. Wall mounted video entry intercom system. Built in storage cupboard. Coving to ceiling. Spotlights. Door leading to bedroom, bathroom and Mezzanine/study.

MEZZANINE/STUDY

11' 9" x 7' 4" (3.59m x 2.24m)
Large sash windows to front and side. Oak flooring. Wall mounted electric panel heater. Spotlights. Feature pendant light fitting. Coving to ceiling. Unique glass stairway, leading to lounge/kitchen/diner.

LOUNGE/KITCHEN/DINER

23' 0" x 15' 2" (7.03m x 4.63m)
Spacious living area. Feature pendant light fitting. Windows to front. Tiled flooring. Wall mounted video entry intercom system. TV Aerial point. Telephone point. Two wall mounted electric panel heaters. Open plan living. Large German kitchen. Modern fitted wall and base units, with granite work surfaces incorporating composite sink, with dual tap and drainer. Built in BOSCH oven, BOSCH microwave/grill and four ring BOSCH induction combination hob, with extractor hood over. Splash back.

Ample storage with under unit lighting. Integrated BOSCH dishwasher, fridge freezer and washer/dryer. Cupboard housing hot water tank. Extractor fan. Coving to ceiling. Spotlights.

BEDROOM

12' 4" x 9' 6" (3.78m x 2.91m)
Large sash windows to front. Carpeted flooring. Floor to ceiling fitted triple wardrobe. Wall mounted electric panel heater. TV Aerial point. Telephone point. Coving to ceiling. Spotlights.

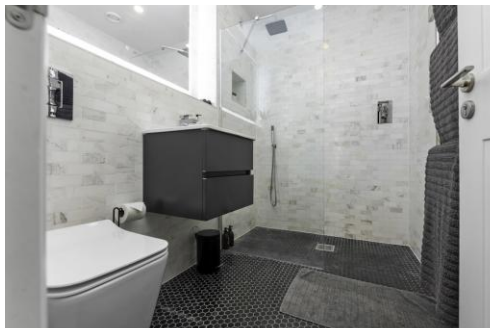
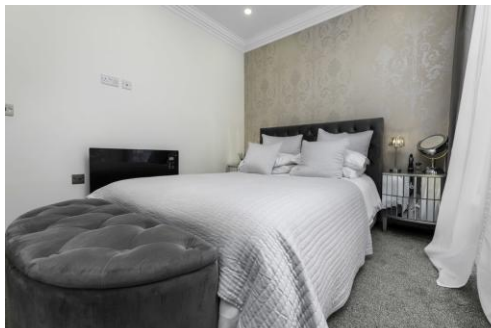
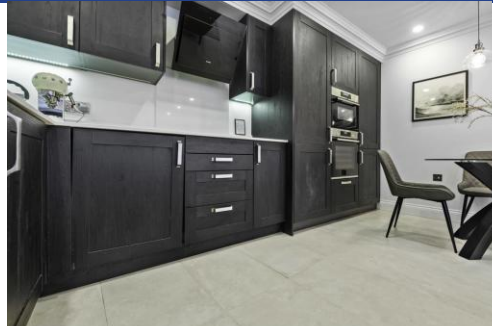
SHOWER ROOM

7' 3" x 5' 10" (2.23m x 1.78m)
Large modern shower room, with Grohe fittings. Tiled flooring. Fully tiled walls. Walk in double shower, with rainfall shower and additional shower attachment. Vanity enclosed wash hand basin, with dual tap. W.C. Large wall mounted LED mirror. Heated towel rail. Extractor fan. Spotlights.

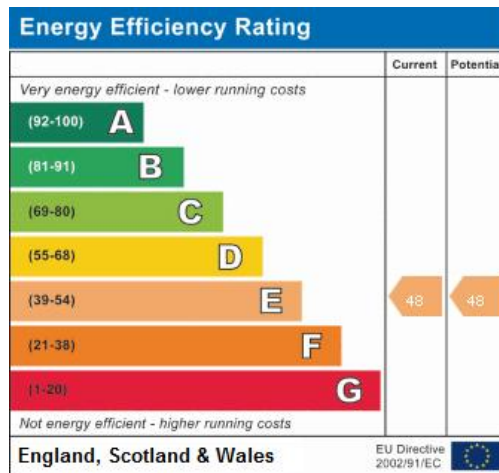
TENURE

MGY are advised that the property is leasehold, with a term of 250 years from 2019. Service charges of £1,422.40 per annum, which includes a security video entry intercom system, maintenance of internal and external communal areas, bike storage, regular cleaning and refuse disposal. Building insurance £353 per annum. Ground rent £190 per annum.

Marine House, Mount Stuart Square,
Cardiff Bay, Cardiff, CF10 5DP



Marine House, Mount Stuart Square,
Cardiff Bay, Cardiff, CF10 5DP



Cardiff 029 2046 5466

13 Mount Stuart Square, Cardiff Bay, Cardiff,
South Glamorgan, CF10 5EE



mgyc.co.uk

Important Notice: These particulars are prepared for guidance only and do not form whole or any part of any offer or contract. Whilst the particulars are given in good faith, they are not to be relied upon as being a statement or representation of fact. They are made without responsibility on the part of MGY Ltd or Vendor/lessor and the prospective purchaser/lessee should satisfy themselves by inspection or otherwise as to their accuracy. Neither MGY Ltd nor anyone in their employ, or the vendor/lessor, imply, make or give any representation/warranty whatsoever in relation to this property.