



33 Hamburg House Cross Street, Portsmouth

Offers in Region of £300,000

 **chinneckshaw**



33 Hamburg House Cross Street

Portsmouth

Located on the 6th floor of this highly sought-after development, this beautifully presented 2-bedroom apartment boasts modern design and a sunny south-facing aspect, perfect for soaking up the sun.

As you enter the property, you're greeted by a spacious hallway with a glimpse into the dual aspect living space at the end. The first bedroom is located at the front of the apartment, offering a generous size with neutral decor and an ensuite bathroom featuring a high-end shower cubicle.

The second bedroom is equally impressive, with a comfortable double bed and neutral decor. The larger bathroom is located off the hallway, featuring a stylish tiled bathroom and white suite.

There is the stunning living room/kitchen, which offers breathtaking views of Gunwharf and Portsmouth's historic dockyard from the floor-to-ceiling windows. The kitchen is well-equipped with ample storage and worktop space, along with integrated appliances. The balcony is accessed from here, providing a delightful outdoor space with views from Portsdown Hill to Gunwharf.

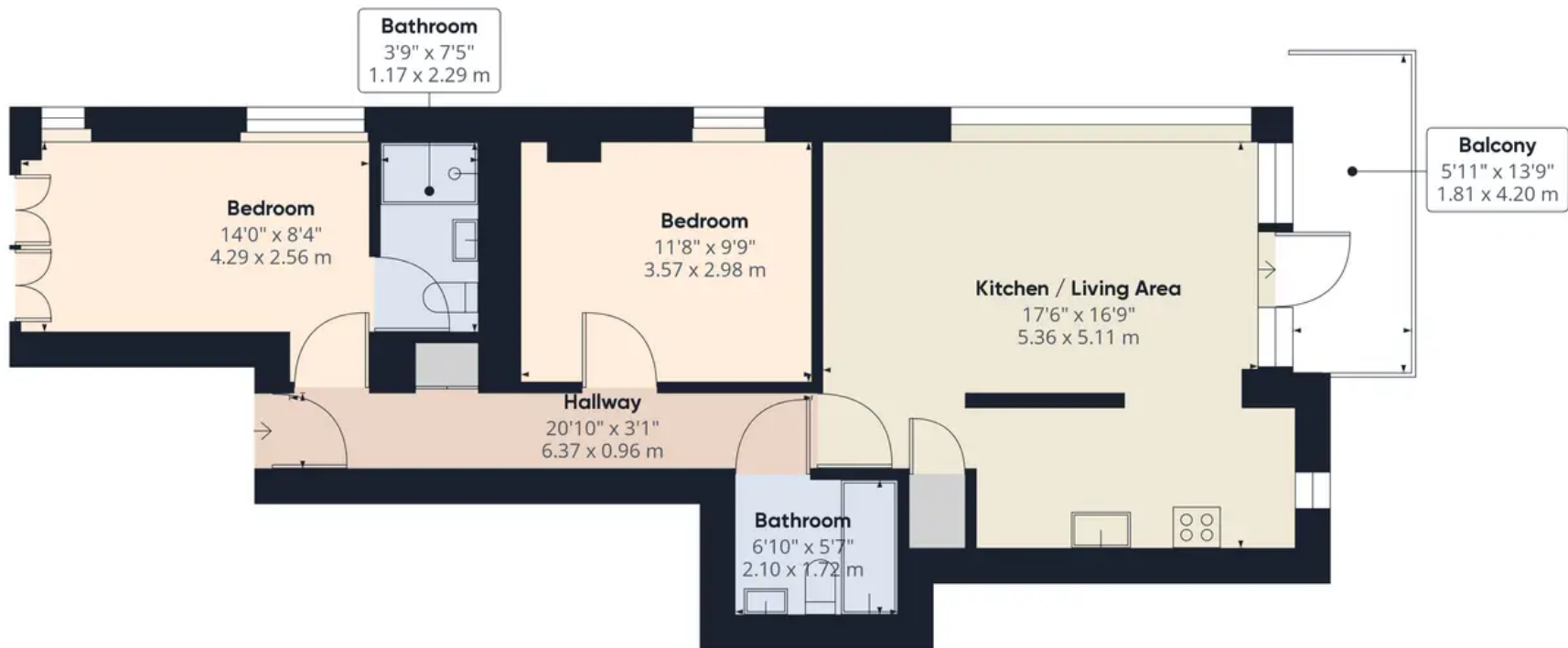
Additional amenities include bike storage and parking facilities. This exceptional apartment is not to be missed.

Book your viewing today

Council Tax band: D

Tenure: Leasehold





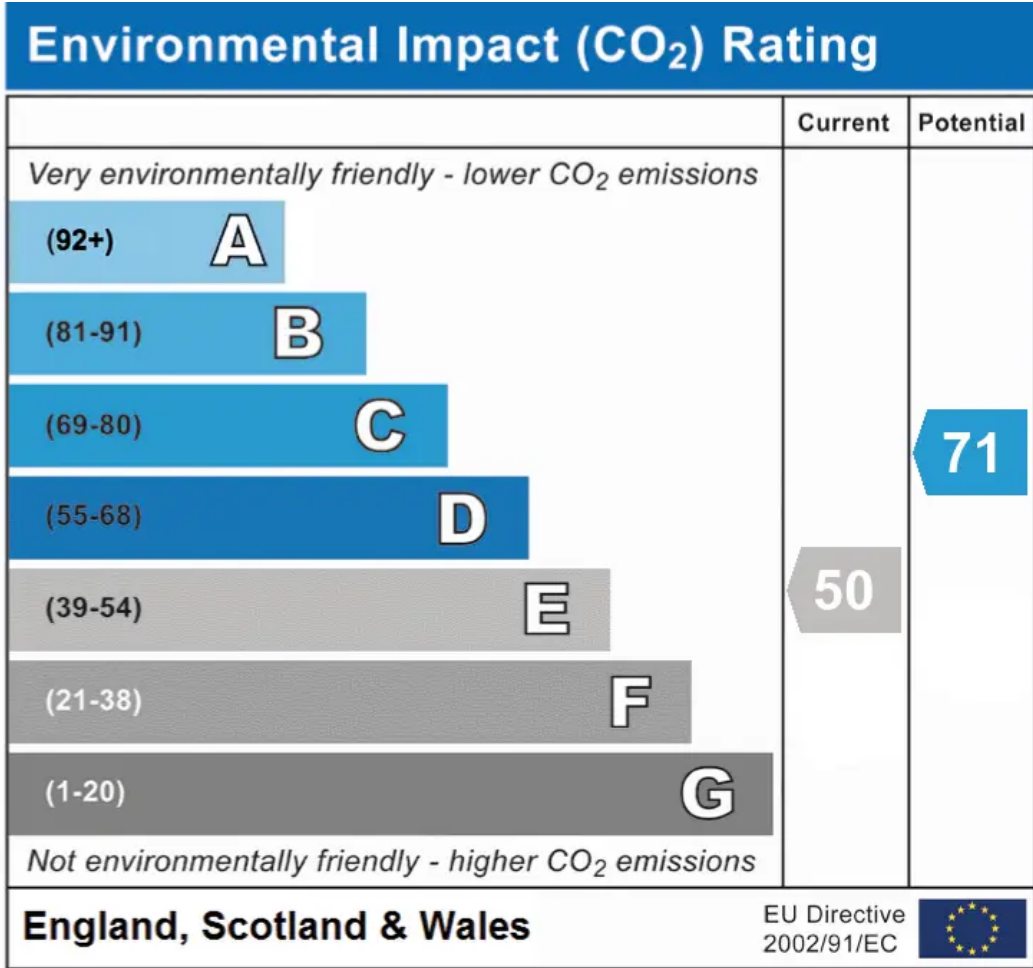
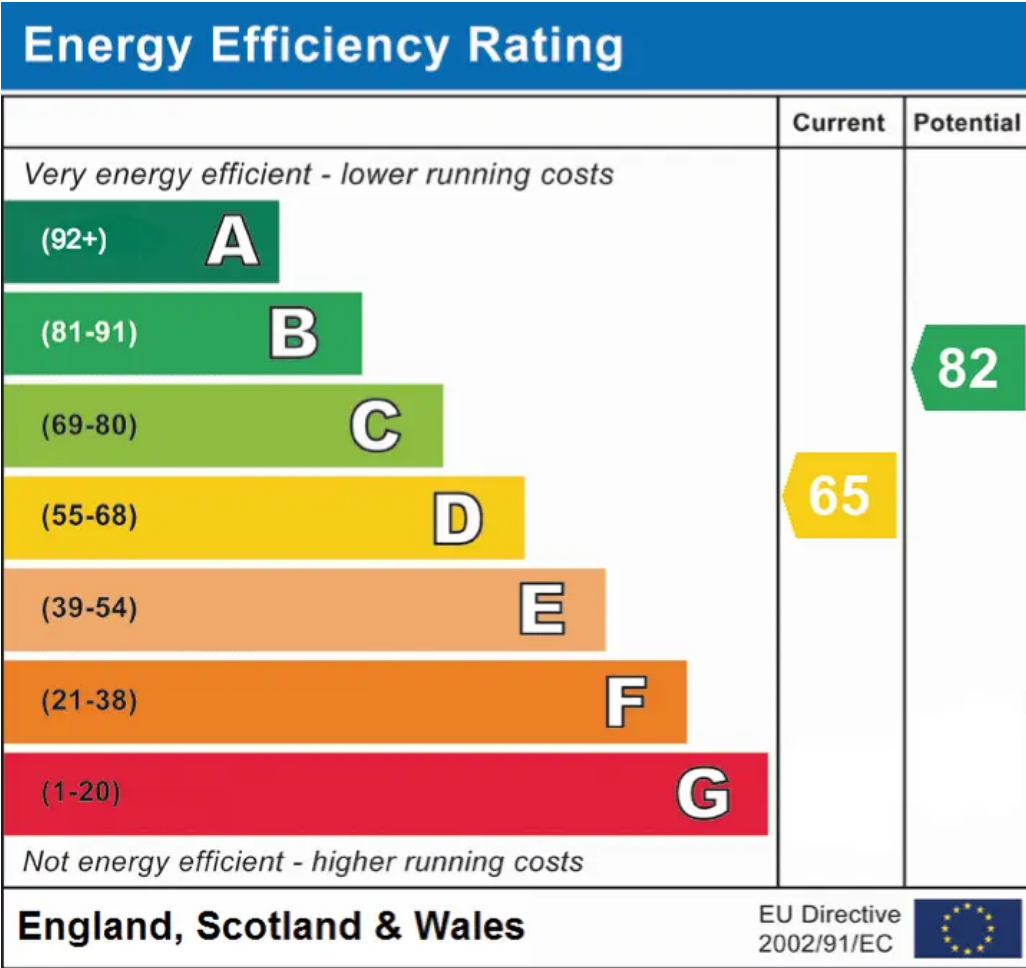
Approximate total area⁽¹⁾

674.78 ft²
62.69 m²

(1) Excluding balconies and terraces

While every attempt has been made to ensure accuracy, all measurements are approximate, not to scale. This floor plan is for illustrative purposes only.

GIRAFFE360



Chinneck Shaw

Bridge House, Milton Road, Portsmouth – PO3 6AN

023 9282 6731

hello@chinneckshaw.co.uk

www.chinneckshaw.co.uk/

Chinneck Shaw, Bridge House, Milton Road, PO3 6AN Consumer Protection from Unfair Trading Regulations 2008: These details are for guidance only and complete accuracy cannot be guaranteed. If there is any point which is of particular importance, verification should be obtained. The do not constitute a contract or part of a contract. All measurements are approximate. No guarantee can be given with regard to planning permissions or fitness for purpose. No apparatus, equipment, fixture or fitting has been tested. Items shown in the photographs are NOT necessarily included. Interested Parties are advised to check availability and make an appointment to view before travelling to see a property.