



Widewater Court, Shoreham Beach, BN43 5LS

Guide Price £300,000 - £325,000

Widewater Court, Shoreham Beach, BN43 5LS

The Property & Area

ARE YOU DREAMING OF A COASTAL LIFESTYLE? THIS INCREDIBLE 1-BEDROOM APARTMENT IS LOCATED IN THE SOUGHT-AFTER WEST BEACH AREA OF SHOREHAM BEACH IN WEST SUSSEX.

With its penthouse-style design and magnificent panoramic views of the Widewater Lagoon and the gorgeous coastline, this property offers a truly exclusive living experience. As you step into this exceptional apartment, you will immediately be captivated by the view.

The light-filled lounge area welcomes you, providing a comfortable and inviting space to relax. Offering ample room for entertaining guests and hosting dinner parties, this reception area opens onto the large west facing terrace.

The double bedroom in this apartment is beautiful, again with amazing sea views that change daily. A separate kitchen has an incredible view of the sea and provides ample space away from the lounge. A standout feature of this property is the large terrace, where you can relax or host gatherings and watch the breathtaking views.

This outdoor space is perfect for alfresco dining, sunbathing, or simply appreciating the beauty of the surroundings.

Practicality is at the heart of this apartment, with a garage and store room ensuring you have ample space for your belongings. Located in the highly desirable Shoreham Beach address, you will be spoiled for choice with the abundant amenities and recreational activities available in the area.

Whether it's taking leisurely strolls along the coastline, practicing water sports, or exploring the vibrant local dining scene, there is something to suit every taste and preference. The close proximity to schools, shops, and transport links further enhances the appeal of this prime location.

Offered with no chain, this penthouse-style apartment presents a rare opportunity to secure a truly exceptional property. Contact us today to arrange a viewing!

MATERIAL INFORMATION:

TENURE - SHARE OF FREEHOLD - FROM 17TH JULY 1962 UNTIL 1 JANUARY 2960

ANNUAL GROUND RENT - £0

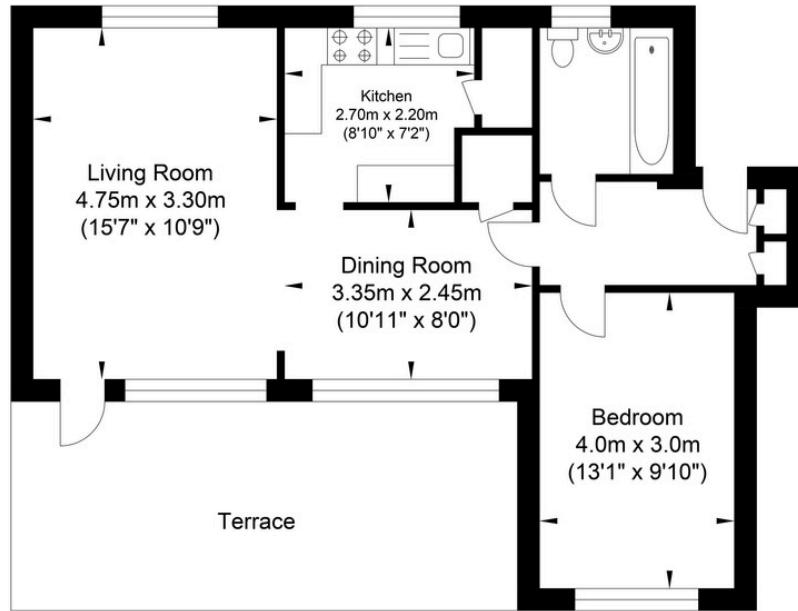
SERVICE CHARGE - £1500 (PER 6 MONTHS) (1/4/2024 - 30/9/2024)

COUNCIL TAX BAND - C

Contact us today to arrange a viewing! 01273 661577
[/shoreham@oakleyproperty.com](mailto:shoreham@oakleyproperty.com)



Widewater Court, Shoreham-by-Sea



Approximate Floor Area
555.63 sq ft
(51.62 sq m)

Approximate Gross Internal Area = 51.62 sq m / 555.63 sq ft
Illustration for identification purposes only, measurements are approximate, not to scale.



Oakley

Your Sussex Property Expert

Shoreham Property Hub
01273 661 577
6 Brunswick Road, Shoreham BN43 5WB
www.oakleyproperty.com
shoreham@oakleyproperty.com

We also have offices in:
Lewes
Brighton & Hove
The London Office



Property Video

Get in touch to book a viewing or valuation of your own property



Energy Performance Certificate

Score	Energy rating	Current	Potential
92+	A		
81-91	B		
69-80	C		74 C
55-68	D		
39-54	E	40 E	
21-38	F		
1-20	G		



Please note:
These details have been produced in good faith and are believed to be accurate based upon the information supplied but they are not intended to form part of a contract. All statements contained in these particulars as to this property are made without responsibility on the part of Oakley, the vendors or lessors and are NOT to be relied on as statements or representations of fact. Any intending purchasers must satisfy themselves by inspection or otherwise as to the correctness of each of the statements contained in these particulars. The vendors, Oakley and any person who work in their employment do not have any authority to make or give any representation or warranty. The floor plan is for illustrative purposes only and the accuracy cannot be relied upon or guaranteed and no responsibility is taken for an error, omission or mis-statement. The total floor area shown has been taken from the EPC.