



**Gladstone House Horton Crescent, Epsom**

In Excess of **£300,000**

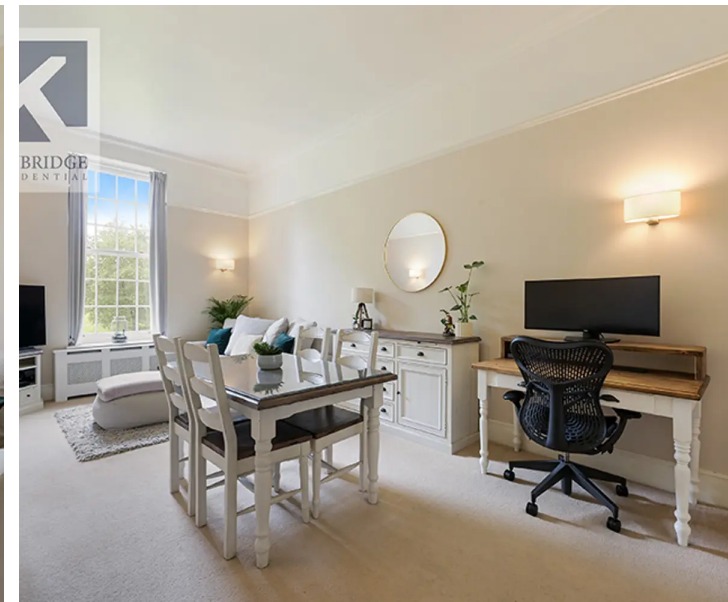
Epsom

# Gladstone House Horton Crescent

- ONE DOUBLE BEDROOM APARTMENT
- 636 SQ FT OF BRIGHT & SPACIOUS LIVING ACCOMMODATION
- 0.8 MILES TO EPSOM RAIL WAY
- LIVINGSTONE PARK DEVELOPMENT
- CHARACTER FEATURES
- RECENTLY RENOVATED

Presented in near show home condition, and retaining many charming features including incredibly high ceilings and beautiful sash windows is this super one double bedroom apartment in the highly popular Livingstone Park Development. Boasting an impressive 626 sq ft of bright living space, this wonderful home has been recently upgraded by the existing owners and genuinely provides a blend of character whilst containing a modern contemporary feeling throughout.

The accommodation itself offers a welcoming entrance hallway which benefits from a large built-in storage cupboard, a stylish fitted kitchen with a feature sash window and integrated appliances including washer/dryer, dishwasher, fridge/ freezer and Wine fridge! However, the heart lies within the stunning reception which possesses great entertaining space topped off with a truly beautiful outlook. In addition there is double bedroom with built in wardrobes and a smart white suite bathroom with bathtub and overhead shower. CHAIN COMPLETED.





## Gladstone House ,Horton Crescent

**\*\* CHAIN COMPLETED\*\*** Meticulously cared for by the existing owners is this really lovely one double bedroom first floor apartment located in the highly sought after Livingstone Park Development. Further benefits include sash windows, high ceilings & parking!

Epsom town centre is located only 0.8 miles away and offers an array of popular shops and bars whilst also allowing commuter friendly links direct to London Waterloo, London Victoria & London Bridge!

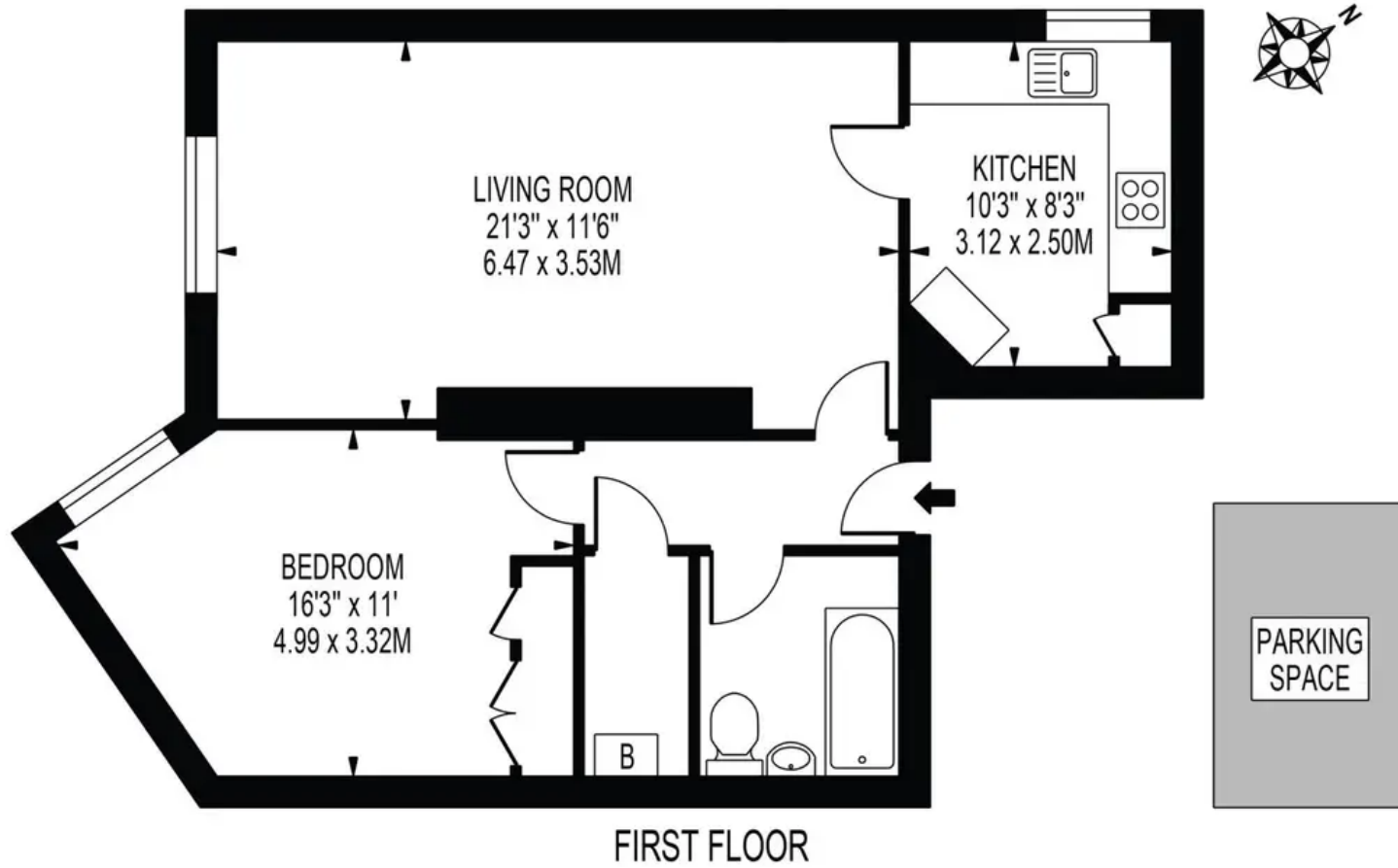
Council Tax band: D

Tenure: Share of Freehold



# GLADSTONE HOUSE

APPROXIMATE GROSS INTERNAL FLOOR AREA: 626 SQ FT - 58.16 SQ M





## Kaybridge Residential Epsom

Kaybridge Residential Estate Agents, 23 Stoneleigh Broadway - KT17 2JE

02080040474 • [info@kbridge.co.uk](mailto:info@kbridge.co.uk) • [www.kaybridgeresidential.co.uk/](http://www.kaybridgeresidential.co.uk/)