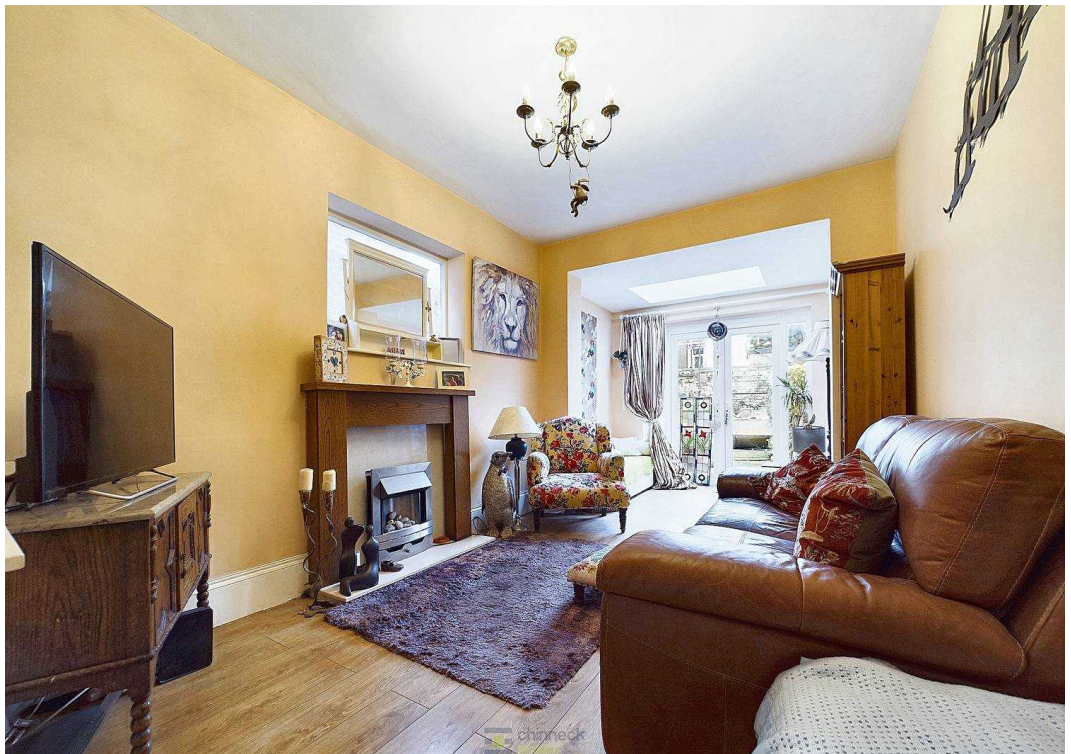




16 Lynton Grove, Portsmouth
Portsmouth

Guide Price £259,995





16 Lynton Grove

Portsmouth, Portsmouth

Welcome to this charming three-bedroom mid-terraced home nestled in the heart of Baffins!

The front reception room offers an inviting dining space, ideal for entertaining guests or enjoying family meals. The central kitchen boasts ample countertop space and storage, making meal preparation a breeze.

As you wander through the hallway, you'll find a convenient downstairs toilet, adding a touch of practicality to the home. Beyond lies the second reception room, transformed into the main living area, complete with a cozy ambiance and flooded with natural light streaming in from a loft light and patio doors leading out to the garden.

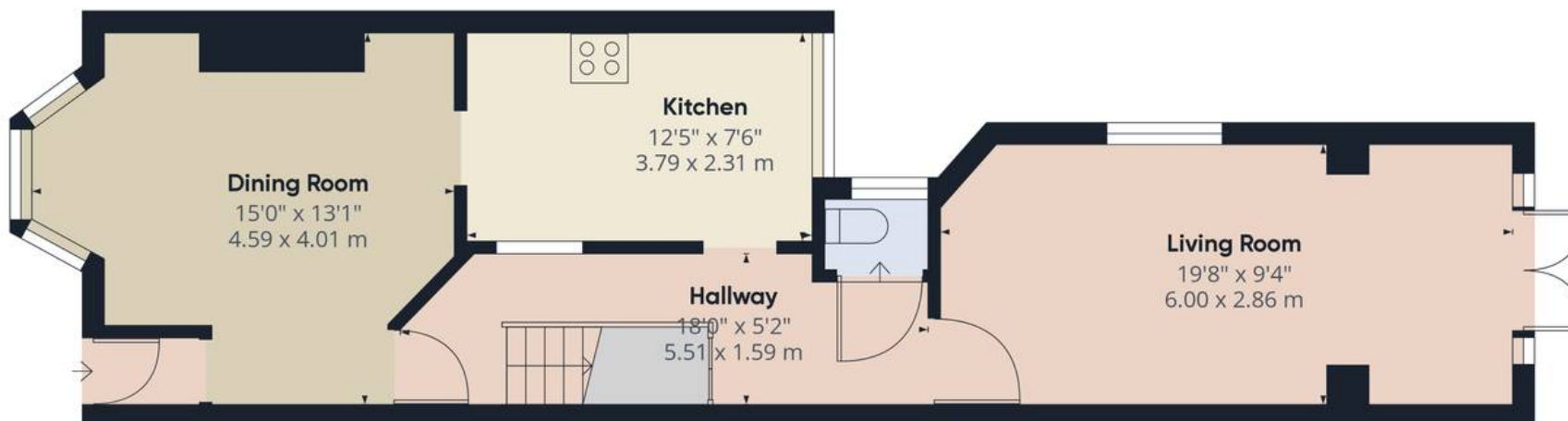
Venture upstairs to find three generously sized bedrooms. The largest bedroom, located at the front, features built-in storage, offering ample space for all your belongings. The second bedroom is equally spacious, providing a comfortable retreat. Meanwhile, the third bedroom, situated at the rear, boasts a lovely view of the garden and offers flexibility as a double bedroom.

Outside, the garden provides a peaceful escape, perfect for enjoying sunny days or hosting alfresco gatherings with friends and family.

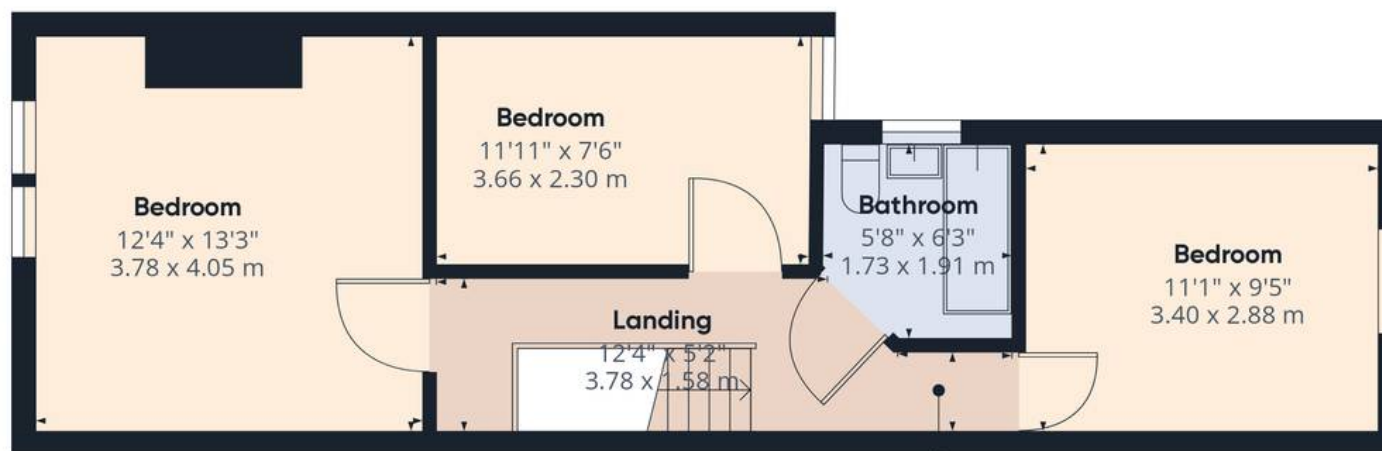
Conveniently located in Baffins, this home offers easy access to local amenities, schools, and transport links, making it an ideal choice for families or professionals seeking a comfortable and well-connected living environment.

Don't miss your chance to make this wonderful property your new home. Council Tax band: C Tenure: Freehold





Ground Floor



Landing
3'7" x 2'9"
1.11 x 0.86 m

Floor 1

Approximate total area⁽¹⁾

999.18 ft²

92.83 m²

(1) Excluding balconies and terraces

While every attempt has been made to ensure accuracy, all measurements are approximate, not to scale. This floor plan is for illustrative purposes only.

GIRAFFE360



Chinneck Shaw

Bridge House, Milton Road, Portsmouth – PO3 6AN

023 9282 6731

hello@chinneckshaw.co.uk

www.chinneckshaw.co.uk/

Chinneck Shaw, Bridge House, Milton Road, PO3 6AN Consumer Protection from Unfair Trading Regulations 2008: These details are for guidance only and complete accuracy cannot be guaranteed. If there is any point which is of particular importance, verification should be obtained. The do not constitute a contract or part of a contract. All measurements are approximate. No guarantee can be given with regard to planning permissions or fitness for purpose. No apparatus, equipment, fixture or fitting has been tested. Items shown in the photographs are NOT necessarily included. Interested Parties are advised to check availability and make an appointment to view before travelling to see a property.