



Lower Anchor Street, CM2 £400,000 (OIEO)

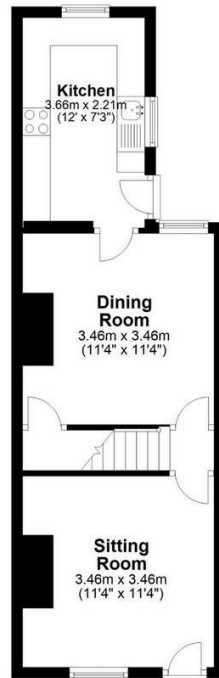
A splendid two bedroom mid-terraced period family home offering two reception rooms, kitchen, opulent bathroom, attractive garden and bonus loft room all conveniently positioned moments from Chelmsford City Centre.





nested
chelmsford

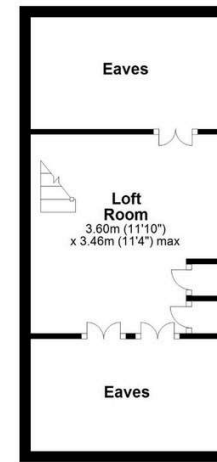
Ground Floor



First Floor



Second Floor



APPROX GROSS INTERNAL AREA 84 SQ M 900 SQ FT (Includes Loft Room Excluding Eaves)
Measured in accordance with RICS guidelines. This floor plan is for illustrative purposes only and is not to scale.
Copyright Nested 2024



CALL ME TO VIEW

Jack Gundry

Partner Nested Chelmsford

01245 970045 | 07969 586519

jack.gundry@nested.com

www.nested.com/chelmsford