



9 Reveston Lane

Whitburn, Bathgate, EH47 8HH



Property Summary

Nestled in the charming town of Whitburn stands this lovely semi-detached three-bedroom home. Deceptively spacious, the property enjoys bright and airy accommodation, which is presented in light neutral hues. It features excellent built-in storage, a three-piece wet room, and a southerly-facing living room connected to a quality dining kitchen. Furthermore, it has a large rear garden, which is fully enclosed and laid with a generous lawn – perfect for all family members, including pets.

Extras: all fitted floor and window coverings, light fittings, integrated kitchen appliances, and a washing machine to be included in the sale.

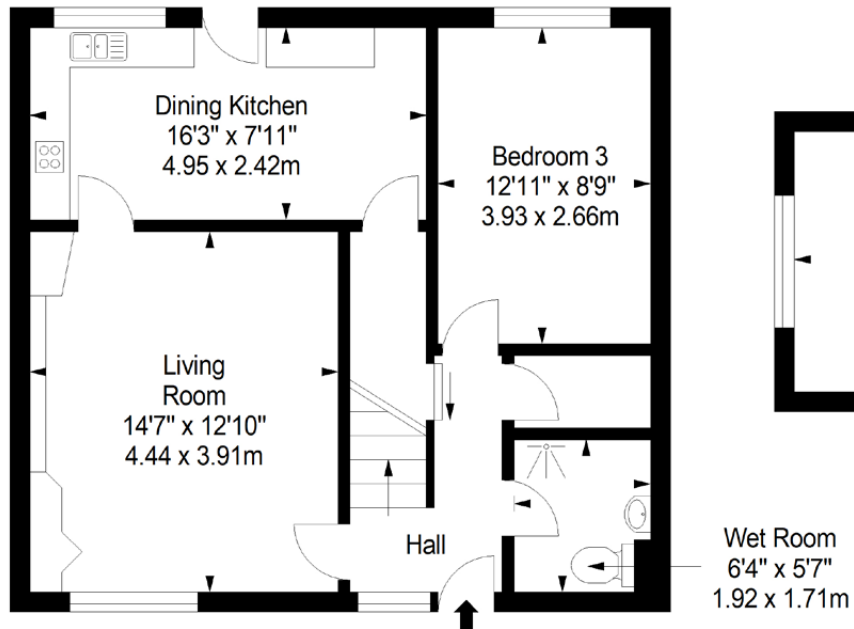
Property Features

- Bright and airy semi-detached home
- In the popular town of Whitburn
- Neutral interiors throughout
- Welcoming entrance hall with storage
- Sunny and spacious living room with a fireplace
- Well-appointed dining kitchen with garden access
- Three bright double bedrooms (two with storage)
- Fully-tiled three-piece wet room
- Well-maintained front and rear enclosed gardens
- Unrestricted on-street parking
- Gas central heating and double glazing
- EPC Rating - E

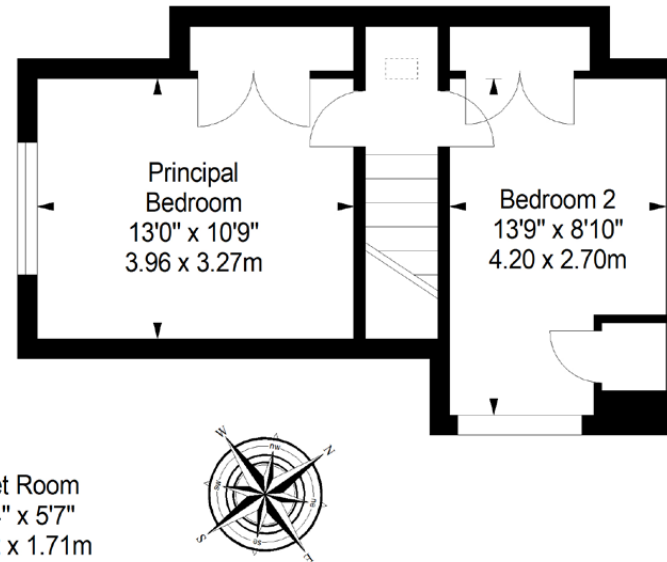


Floorplan

Ground Floor
Approx. 54.6 sq. metres (587.7 sq. feet)



First Floor
Approx. 31.3 sq. metres (336.9 sq. feet)



Total area: approx. 85.9 sq. metres (924.6 sq. feet)

All Enquiries to our Property Department:

01506 815832 | afton.henderson@sneddons-ssc.co.uk | www.sneddonmorrison.co.uk
14 East Main Street, Whitburn, West Lothian EH47 0RB

IMPORTANT: The selling agents for themselves and for the sellers of the above property give notice that these particulars are for guidance only and their accuracy is not guaranteed. These particulars will not form part of any contract and interested parties should satisfy themselves in all aspects prior to submitting offers. The sellers do not bind themselves to accept the highest offer. S1106