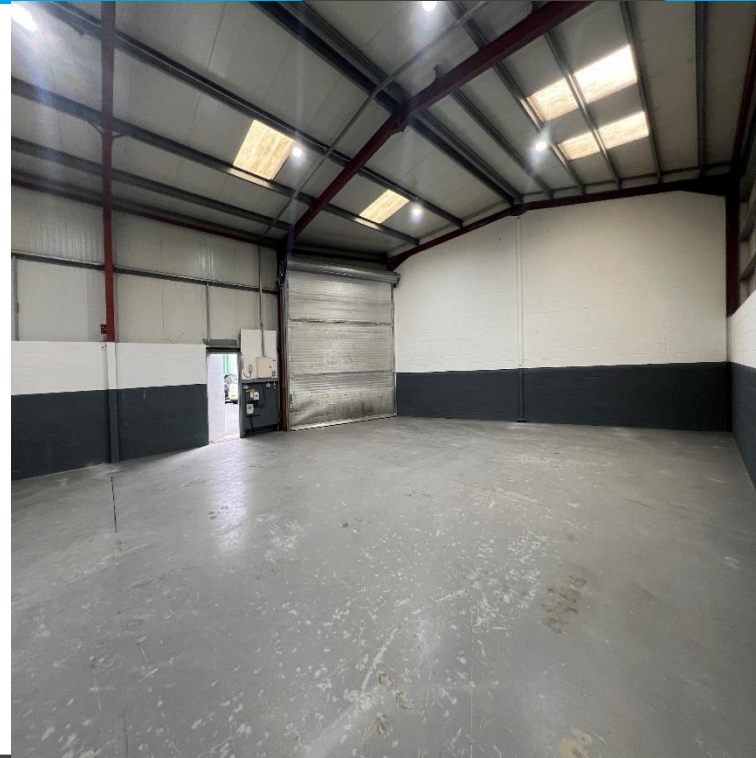


TO LET



Unit 7, Finney's Business Centre, Bury, BL9 9NS

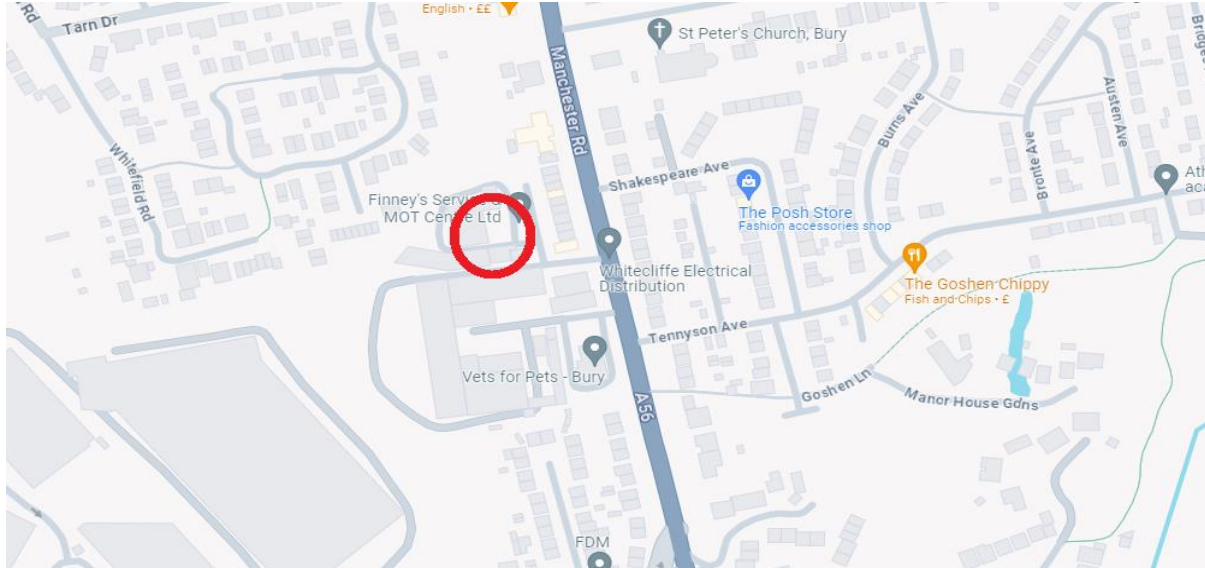
1,555 sq ft approx.

Single Storey warehouse unit

- LED lighting
- 4 metre high level access loading door
- Clear span warehouse
- W/C
- **RENT ON APPLICATION**



Unit 7, Finney's Business Centre, Bury, BL9 9NS



Location

The unit is situated off Manchester Road (A56) and is approximately 2 miles from Bury Town Centre.

Description

The property comprises a single storey warehouse and it benefits from the following:

- A 4m high level access loading door
- Solid concrete floor
- Parking
- W/C facilities
- LED Warehouse lighting
- Clear span warehouse
- Steel portal frame construction

Rental

The property is available on a leasehold basis. The rent is available on application

Legal Costs

Each party will bear their own legal costs.

Rating

We advise that all parties contact the relevant local authority to obtain the rateable value.

Subject to Contract

The property is offered subject to formal contract / lease.

Viewing

Viewings strictly by appointment with agents BC Real Estate. Please contact:

John Barton

john@bcrealestate.co.uk

Gary Chapman

gary@bcrealestate.co.uk