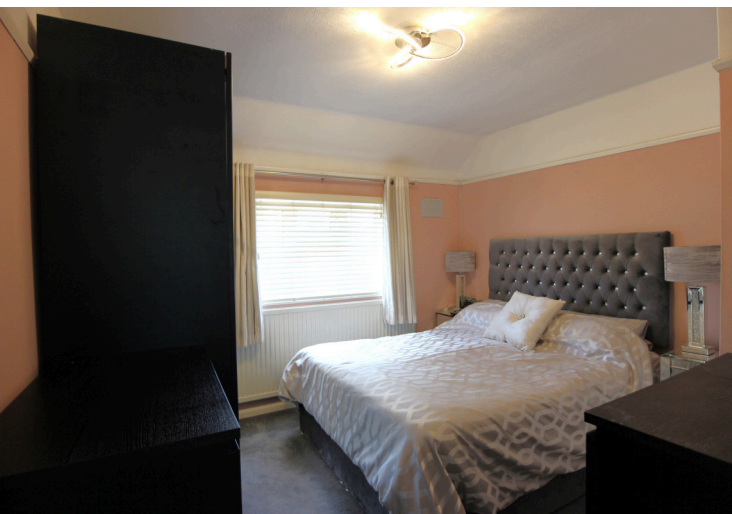




Castle Road, Hoddesdon, Herts

  
**Reynolds Salter**  
Estate Agents



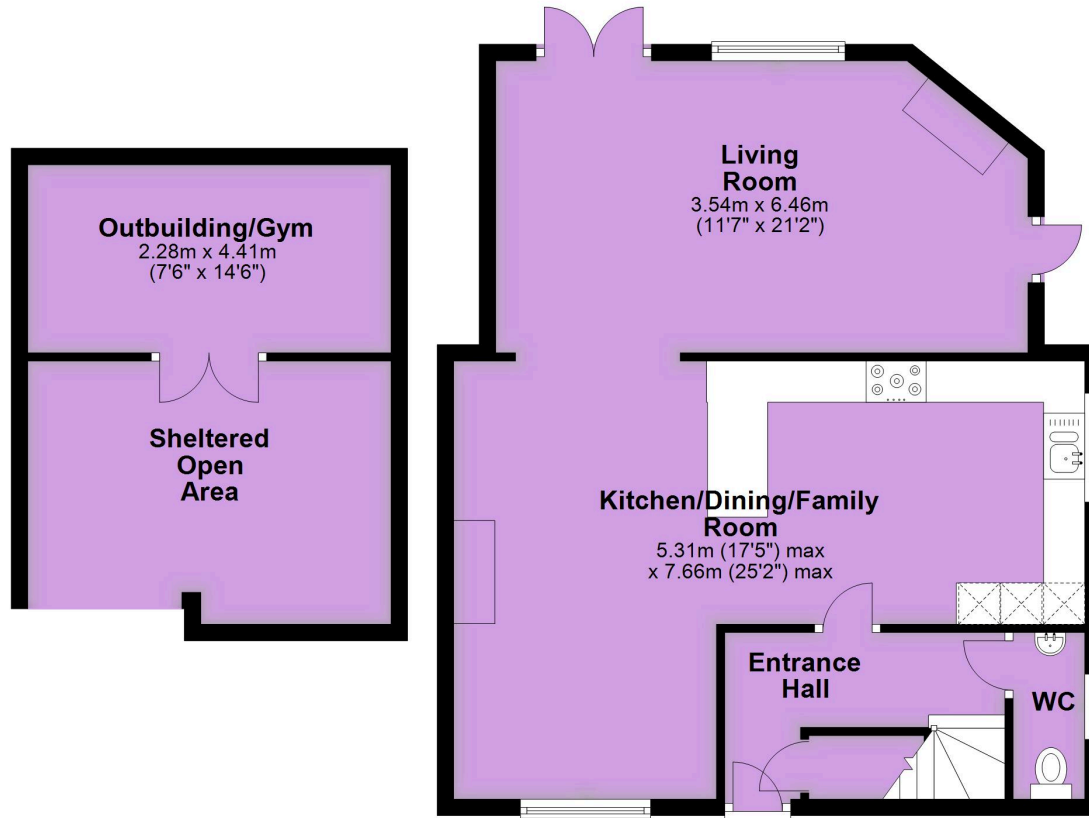


An Impressive Three Bedroom EXTENDED semi detached home with a DETACHED OUTBUILDING/GYM and enclosed Hot Tub area, tucked away in this rarely available residential turning close to Rye House Railway Station. This fabulous home offers exceptionally spacious accommodation comprising of Three Bedrooms and a Re-fitted Bathroom on the first floor and on the ground floor an Entrance Hallway, Lounge with wood burner, Stunning 25'2 max x 17'5 max Re-fitted Kitchen Diner and a Cloakroom/wc. The property occupies a corner plot with a delightful low maintenance landscaped rear garden with a large resin patio with raised flower beds along with a further resin finished garden area to the side of the house. At the end of the garden there is an enclosed area where the hot tub is situated and this area gives access to the DETACHED OUTBUILDING/GYM. Castle Road is a highly desirable location close to local playing fields and park, just over 0.25 of a mile from Rye House Station (London Liverpool Street) and a short walk from The John Warner School and Sports Centre.

- **Extended Semi Detached House**
- **Three Bedrooms**
- **Re-Fitted Bathroom**
- **Stunning Kitchen Diner**
- **Lounge With Wood Burner**
- **Landscaped Rear Garden**
- **Detached Outbuilding/Gym**

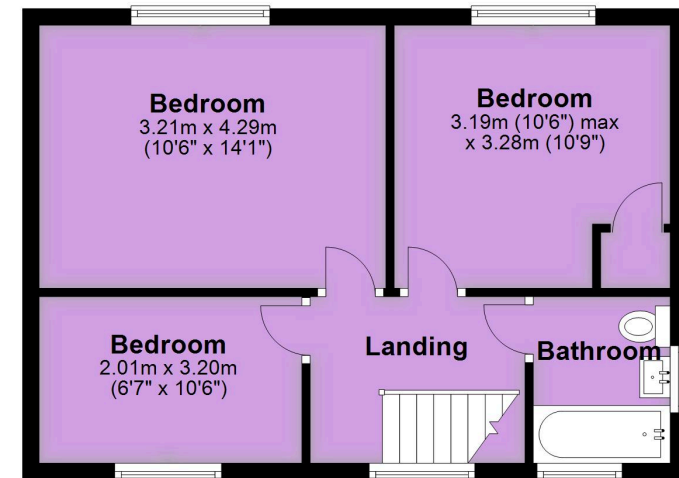
## Ground Floor

Approx. 63.3 sq. metres (681.6 sq. feet)



## First Floor

Approx. 40.8 sq. metres (438.9 sq. feet)



Total area: approx. 104.1 sq. metres (1120.5 sq. feet)

### Important notice

1. Particulars: These particulars are not an offer or contract, nor part of one. You should not rely on statements by Reynolds Salter in the particulars or by word of mouth or in writing ("information") as being factually accurate about the property, its condition or its value. Neither Reynolds Salter nor any joint agent has any authority to make any representations about the property, and accordingly any information given is entirely without responsibility on the part of the agents, seller(s) or lessor(s). 2. Photos etc: The photographs show only certain parts of the property as they appeared at the time they were taken. Areas, measurements and distances given are approximate only. Regulations etc: Any reference to alterations to, or use of, any part of the property does not mean that any necessary planning, building regulations or other consent has been obtained. A buyer or lessee must find out by inspection or in other ways that these matters have been properly dealt with and that all information is correct. 4. VAT: The VAT position relating to the property may change without notice.