



375c Bensham Lane, Thornton Heath

£290,000 Leasehold



haboodle

This two-bedroom split-level period maisonette is set within the heart of Thornton Heath. It is ideal for a first-time buyer or a buy-to-let investor. It is well located for transport links, has its own front door, and boasts over 850 sq ft of living space.

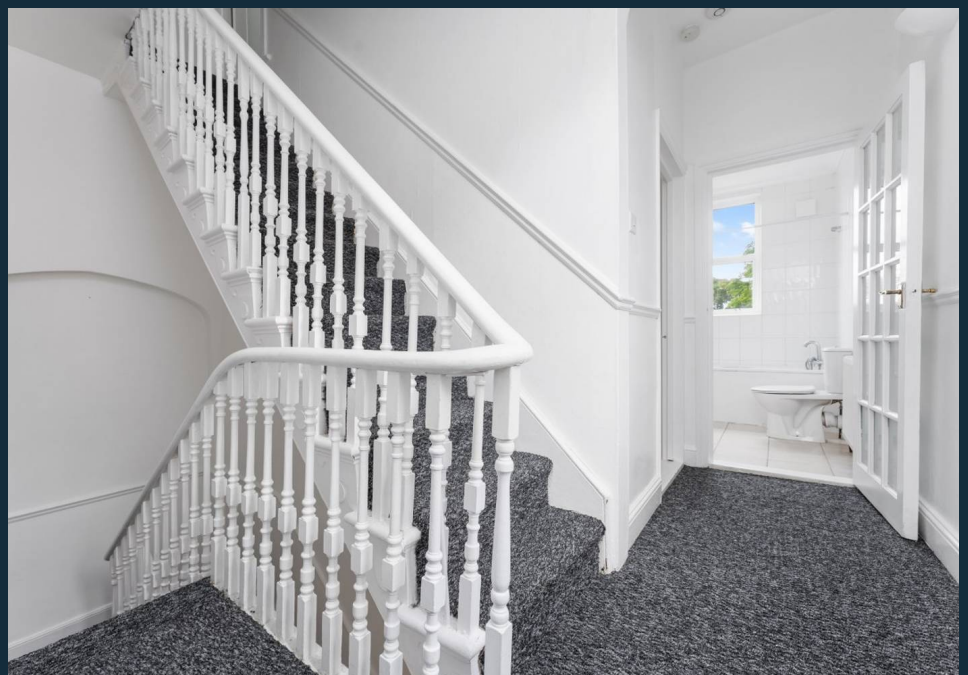
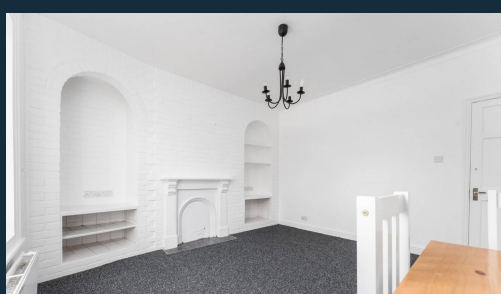
The property is accessed via stairs to your front door. It has a spacious reception room with natural light beaming through and space for a dining area. There is a separate kitchen with modern appliances and ample cupboard space. A three-piece bathroom is also located on this floor. On the second floor, there are two double bedrooms with built-in wardrobes.

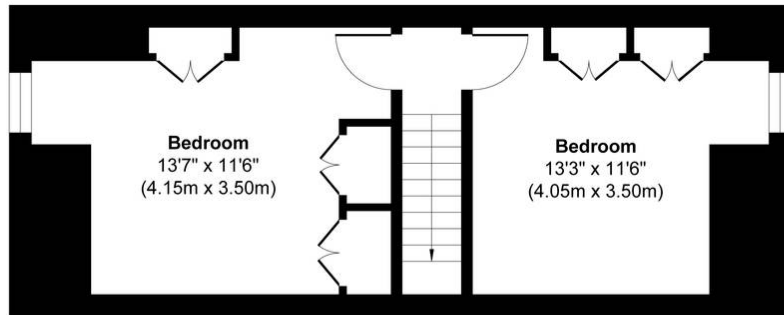
This maisonette has been newly carpeted throughout and is freshly painted white, ready for someone to put their stamp on this home. The property is being sold with no onward chain and a healthy 150 + years remaining on the lease.

Located just 0.4 miles from Thornton Heath Station, access to Central London could not be any easier with direct trains to London Victoria and

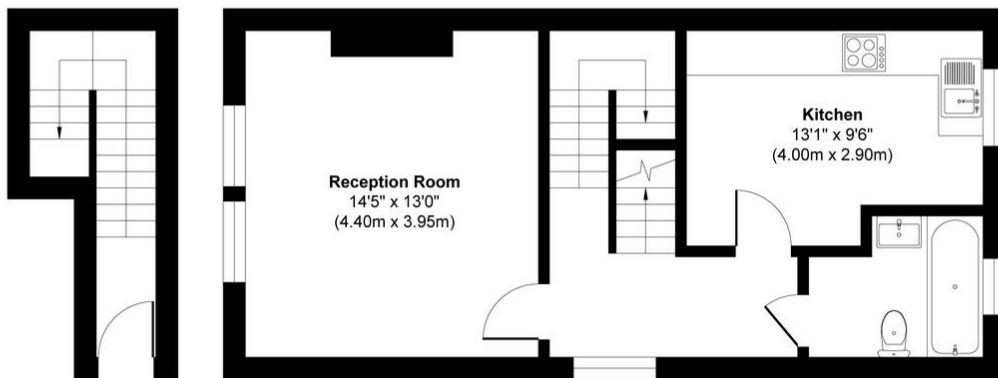


- › Two Double Bedroom Maisonette
- › Own Front Door
- › Newly Painted & Carpeted Throughout
- › Over 150 Years Remaining On The Lease
- › 0.3 Miles To Thornton Heath Train Station
- › Boasting Over 850 Sq Ft





Second Floor



First Floor

Ground Floor



Bensham Lane, Thornton Heath, CR7

Approx. Gross Internal Area 867 sq. ft / 80.59 sq. meters

Whilst every attempt has been made to ensure the accuracy of the floorplan shown, all measurements, positioning fixtures fittings and any other data shown are an approximate interpretation for illustrative purposes only and are not to scale. No responsibility is taken for any errors, omission, miss-statement or use of data show.

Plan produced by AR Net Media-www.arnetmedia.uk



haboodle