



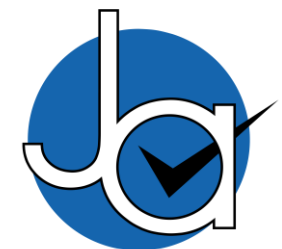
4 bedroom Detached House located in Colchester.

Guide Price
£400,000 - £435,000



JOHN ALEXANDER
ESTATE AGENTS

Find us on..



JOHN ALEXANDER
ESTATE AGENTS

Oak Tree Gardens Colchester CO2 8XW

FULL DESCRIPTION

THE HOME

Nestled in the heart of the serene Oak Tree Gardens neighbourhood, this stunning four-bedroom offers an exemplary combination of space, elegance, and comfort-perfect for modern family living.

As you enter the foyer, you are greeted by a bright and welcoming entrance hall that sets the tone for the rest of this immaculate home. To your left, the spacious lounge whispers relaxation, with large windows that drape the room in natural light. Its generous dimensions ensure it's an ideal space for both entertaining guests and enjoying peaceful family evenings.

The kitchen presents the perfect setting for dinner parties or special family meals. French doors open to a beautiful patio, a sun-drenched space where you can enjoy your morning coffee or unwind with a book while overlooking the elegantly landscaped rear garden.

Upstairs, the master bedroom is a luxurious retreat, featuring built an en-suite bathroom complete with contemporary fixtures and chic finishes. Three additional well-proportioned bedrooms offer flexible accommodation, perfect for children, guests, or even a home office.

The family bathroom, with its modern design and luxurious bath, serves these bedrooms, ensuring convenience and style go hand in hand.

The property's rear garden is a private oasis, landscaped to perfection with a patio area for al fresco dining, lush lawns, and a variety of shrubs that promise colour throughout the seasons. This outdoor haven is the ultimate venue for summer barbecues and outdoor activities.

Completing this magnificent home is a Driveway to side, with additional parking in front.

Situated in a desirable CO2 postal area of Colchester, this property benefits from the tranquillity of suburban life while being in proximity to excellent schools, local amenities, and transport links.

Oak Tree Gardens is more than just a house; it's a place to call home-a perfect blend of luxury, comfort, and convenience.



4



2



1



C



EPC

TBC



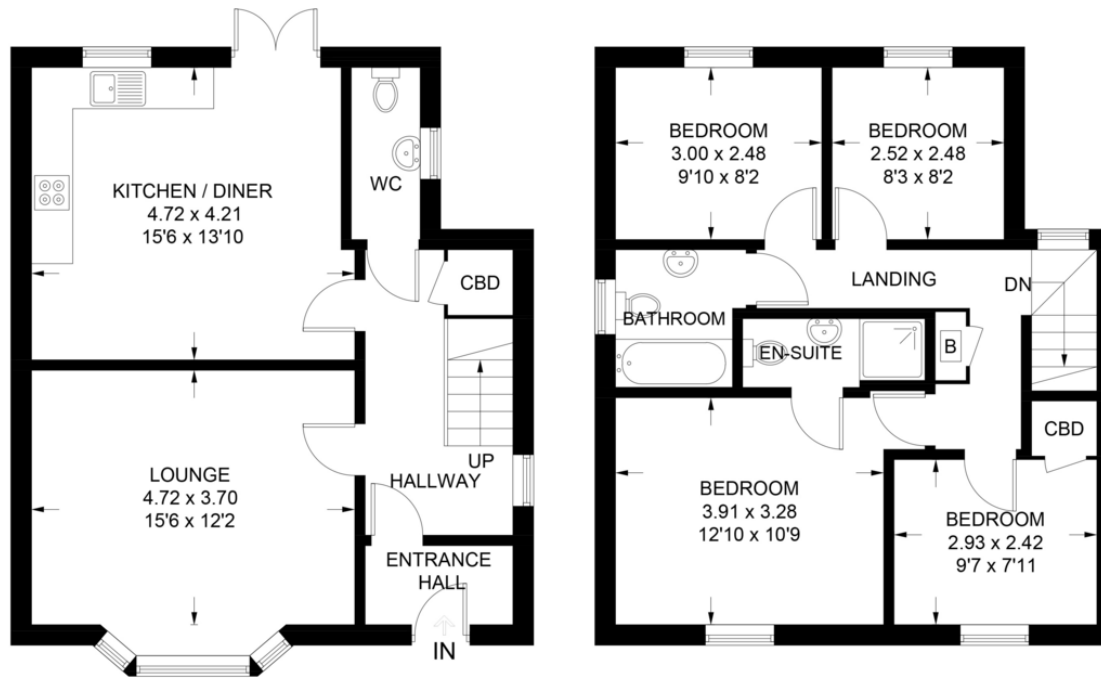
1,156 sq ft



FLOORPLAN

Oaktree Gardens

Approximate Gross Internal Area = 107.5 sq m / 1156 sq ft



GROUND FLOOR
54.4 sq m / 585 sq ft

FIRST FLOOR
53.1 sq m / 571 sq ft

Illustration for identification purposes only,
measurements are approximate, not to scale.

DIRECTIONS

CONTACT

99 London Road
Stanway
Colchester
Essex
CO3 0NY

E sales@john-alexander.co.uk

T 01206 656007

www.john-alexander.co.uk

Find us on..



JOHN ALEXANDER
ESTATE AGENTS