

FOR SALE



Francis Crescent North, Rotherham
Guide Price £220,000


MARTIN & CO



Francis Crescent North, Rotherham

3 Bedrooms, 1 Bathroom

Guide Price £220,000

- Three bedrooms
- Two reception rooms
- Enclosed rear garden
- Drive and garage
- Sought-after location

GUIDE PRICE £220,000 - £230,000. Located in the highly sought-after area of Rotherham, Francis Crescent North stands proudly elevated from pavement level. This deceptively spacious, three-bedroom semi-detached family home offers a unique blend of charm and functionality making it an ideal choice for a variety of buyers. The property's prime location provides easy access to local amenities, public transport, and excellent commuter links, making it a must-see.



As you enter the property, you are greeted by a welcoming front entrance porch that leads into a spacious hall. The dining room, currently utilized as a work space, offers flexibility for various uses. The rear-facing lounge featuring patio doors, opens directly to the delightful rear garden creating a perfect space for relaxation and entertainment. The kitchen is well-appointed with beech-effect wall and base units complete with an oven, hob, extractor and integrated dishwasher, ensuring a functional and stylish cooking environment.

Ascending to the first floor, you will find three generously sized bedrooms, each providing ample space for family living. The family bathroom, complemented by a separate WC, adds convenience

for the household.

Externally the property boasts a drive to the side leading to a single garage which has light and power. The front of the house provides additional parking. The enclosed rear garden is a highlight, featuring a patio area, a raised lawn with mature borders and hedging, a vegetable plot, and a further patio area, perfect for outdoor activities and gardening enthusiasts.

Situated in Rotherham, the property benefits from proximity to a range of local amenities, including shops, schools, and parks. Excellent public transport links and commuter routes make travelling easy and convenient. This property is not just a home; it's a lifestyle, offering space, comfort, and accessibility. Don't miss out on this fantastic opportunity to own a beautiful family home in a prime location.

ENTRANCE PORCH Having a side facing entrance door, tiled flooring, front and side facing windows.

ENTRANCE HALL A generous size entrance hall with a staircase rising to the first floor landing. With laminate flooring and side facing window.

RECEPTION ROOM A flexible room currently used as a workroom, could be a second sitting room or dining room. The focal point of the room is the feature fire surround and there are two front facing windows.

LOUNGE A rear facing lounge which looks out to the rear garden. The focal point of the room is the feature fire surround and patio doors open to the garden.

KITCHEN With a range of fitted wall and base units in beech effect with oven, hob and extractor hood. Base units are set beneath worktops which include a single bowl sink, space for fridge freezer, plumbing for washing machine, integrated dishwasher, under stairs storage. There is a tiled floor, tiled splash backs, rear facing window and side facing entrance door.



LANDING A spacious landing, with side facing window, access to the insulated and part-boarded loft, and built-in storage housing the combi central heating boiler.

BEDROOM ONE A double size bedroom with front facing window which offers far reaching views.

BEDROOM TWO A double size room overlooking the rear garden.

BEDROOM THREE A good size single room with built in storage cupboard and front facing window offering far reaching views.

BATHROOM With a white two piece suite comprising a vanity wash hand basin, bath with shower set over, extractor fan, decorative wall boarding and rear facing window.

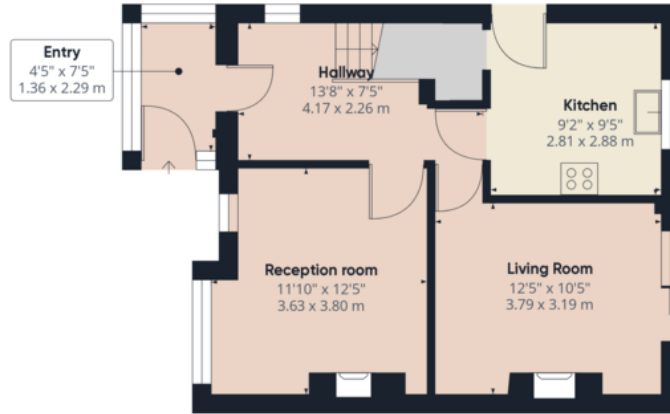
WC With a low flush WC, decorative wall boarding and side facing window.

OUTSIDE There is a drive to the side of the property which leads to the single garage, recently re-roofed. There is further parking to the front with mature hedging. To the rear is an enclosed garden with paved patio, raised lawn with mature shrubs and trees. A vegetable plot with fruit bushes and further patio area.

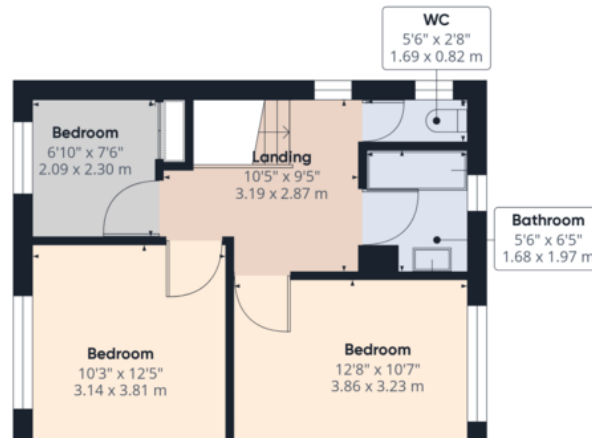


Score	Energy rating	Current	Potential
92+	A		
81-91	B		84 B
69-80	C	71 C	
55-68	D		
39-54	E		
21-38	F		





Ground Floor



Approximate total area⁽¹⁾

929.59 ft²
86.36 m²

(1) Excluding balconies and terraces

While every attempt has been made to

Martin & Co Rotherham

5 Worry Goose Lane • Whiston • Rotherham • S60 4AA
T: 01709 544982 • E: rotherham@martinco.com

01709 544982

<http://www.martinco.com>



Accuracy: References to the Tenure of a Property are based on information supplied by the Seller. The Agent has not had sight of the title documents. A Buyer is advised to obtain verification from their Solicitor. Items shown in photographs including but not limited to carpets, fixtures and fittings are not included unless specifically mentioned within the sales particulars. They may however be available by separate negotiation. Buyers must check the availability of any property and make an appointment to view before embarking on any journey to see a property. No person in the employment of the agent has any authority to make any representation about the property, and accordingly any information given is entirely without responsibility on the part of the agents, sellers(s) or lessors(s). Any property particulars are not an offer or contract, nor form part of one. **Sonic / Laser Tape:** Measurements taken using a sonic / laser tape measure may be subject to a small margin of error. **All Measurements:** All Measurements are Approximate. **Services Not tested:** The Agent has not tested any apparatus, equipment, fixtures and fittings or services and so cannot verify that they are in working order or fit for the purpose. A Buyer is advised to obtain verification from their Solicitor or Surveyor.