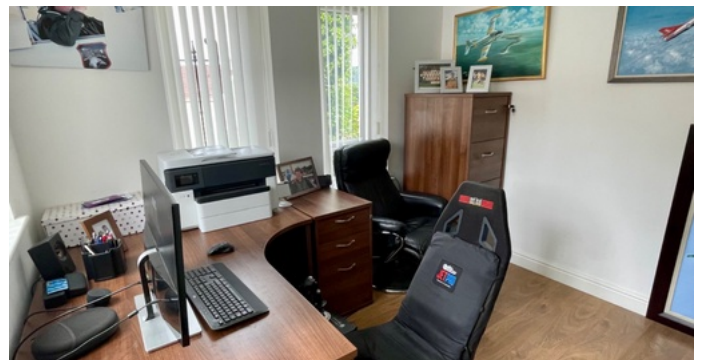
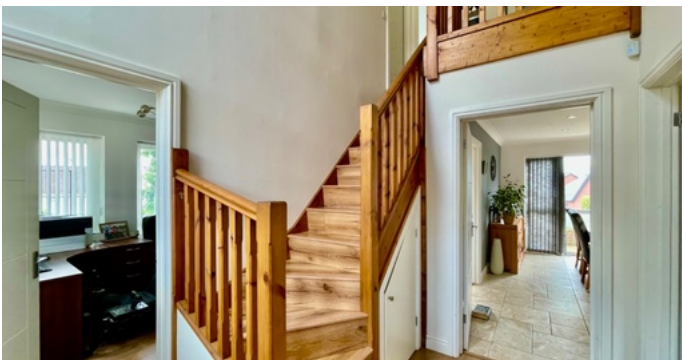







Yew Tree Gardens Clydach



- ✔ Exceptional Detached Property
- ✔ Sought After Small Development
- ✔ Convenient Location
- ✔ 3 Reception Rooms
- ✔ Stunning Kitchen/ Diner

- ✔ Downstairs Cloakroom
- ✔ 4 Double Bedrooms
- ✔ Master Bedroom With Ensuite
- ✔ Fully Tiled 4 Piece Bathroom Suite
- ✔ Must Be Seen

Fixed Price **£475,000**

Bedroom  4 Bathroom  3 Reception  3