



FINDING YOU A HOME SINCE 1972
B

10 Georgetown Mews, Georgetown Park Estate, St. Clement
£775,000

BROADLANDS

FINDING YOU A HOME SINCE 1972

10 Georgetown Mews, Georgetown Park Estate

St. Clement, Jersey

- Modern three bedroom, three bathroom townhouse
- Set over four floors
- Garage plus secure gated parking
- Visitor spaces
- Built in 2013 by Dandara
- Select development of 11 homes
- Secure low maintenance garden
- Sole agent
- Contact James on 07829835076 or james@broadlandsjersey.com



10 Georgetown Mews, Georgetown Park Estate

St. Clement, Jersey

Nestled in a sought-after residential area, this modern three-bedroom, three-bathroom townhouse offers a perfect blend of contemporary design and comfort. Spread over four floors, this property boasts a spacious layout, complete with a garage, secure gated parking, and additional visitor spaces for convenience. Built in 2013 by the reputable local developer Dandara, this townhouse is part of an exclusive development of just 11 homes. The secure low-maintenance garden provides an ideal outdoor retreat.





Living

On the first floor at the front of the house is the modern eat in kitchen with fully integrated electric appliances. At the rear is the separate lounge with Juliet balcony overlooking the private garden. This is accessed from the utility room on the ground floor.

Sleeping

Three good sized double bedrooms all with great storage options. The top floor benefitting from a walk through dressing area and ensuite shower room. The other bedrooms are on the second floor and serviced by the main bathroom on the same floor. The third shower room is on the ground floor next to the utility.

Outside

Beautiful manicured communal gardens at the front of the property in the courtyard on the first floor. On the ground floor at the rear of the house there is a fully enclosed private garden with low maintenance astro turf. Within the gated car park there is one allocated space and then each house has a private single garage.

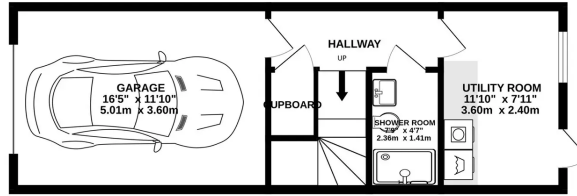
Services

All mains services. Electric modern radiators throughout. Service charge is £85 per month.

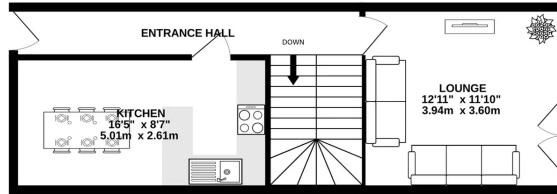




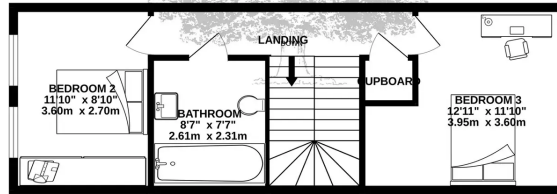
GROUND FLOOR
419 sq.ft. (38.9 sq.m.) approx.



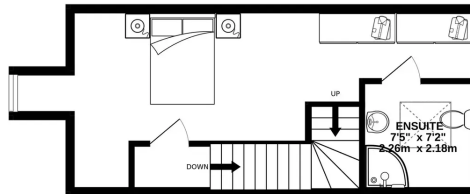
1ST FLOOR
419 sq.ft. (38.9 sq.m.) approx.



2ND FLOOR
419 sq.ft. (38.9 sq.m.) approx.



3RD FLOOR
321 sq.ft. (29.8 sq.m.) approx.



TOTAL FLOOR AREA : 1578 sq.ft. (146.6 sq.m.) approx.

Whilst every attempt has been made to ensure the accuracy of the floorplan contained here, measurements of doors, windows, rooms and any other items are approximate and no responsibility is taken for any error, omission or mis-statement. This plan is for illustrative purposes only and should be used as such by any prospective purchaser. The services, systems and appliances shown have not been tested and no guarantee as to their operability or efficiency can be given.
Made with Metropix ©2024



Broadlands

Broadlands Estates, Library Place - JE2 3NL

01534 880770 • enquiries@broadlandsjersey.com • www.broadlandsjersey.com/

BROADLANDS

FINDING YOU A HOME SINCE 1972