



8 Mon Desir, La Rue Des Pres, Grouville
£439,000

BROADLANDS

FINDING YOU A HOME SINCE 1972

8 Mon Desir, La Rue Des Pres

Grouville, Jersey

Heading east on La Rue a Don, pass the Beachcombers hotel on your left and take the next right at the crossroads onto La Rue des Pres. The apartment block is the first building on the left hand side.

- Fantastic location, close to the beach and golf club in Grouville
- Ground floor, two double bedroom apartment
- Recently refurbished with modern kitchen & bathroom
- Low maintenance and very efficient
- Off road parking for one car plus visitor spaces
- No onward chain
- Sole agent
- Contact James on 07829 835076 or james@broadlandsjersey.com



8 Mon Desir, La Rue Des Pres

Grouville, Jersey

This ground floor apartment is situated in an enviable location, just moments away from the beach and golf club in Grouville.

Comprises two generously sized double bedrooms, making it an ideal home for a small family or working professionals. With modern features and contemporary finishes, including the kitchen and bathroom, this property offers a perfect blend of style and functionality.

The property further benefits from off road parking for one car, ensuring convenient access, along with visitor spaces for any guests you may have. With the added advantage of being available with no onward chain, interested parties benefit from a swift and seamless purchase process.





Living

Entering the property you will find a large open plan kitchen / lounge with fully integrated modern appliances and a island with a breakfast bar.

Sleeping

Off the hallway you will find two double bedrooms, the primary benefiting from large storage cupboards. The bathroom was recently refurbished and has separate bath and walk in shower.

Outside

In the courtyard there is allocated parking for one car and just off the road there are a couple of visitor spaces.

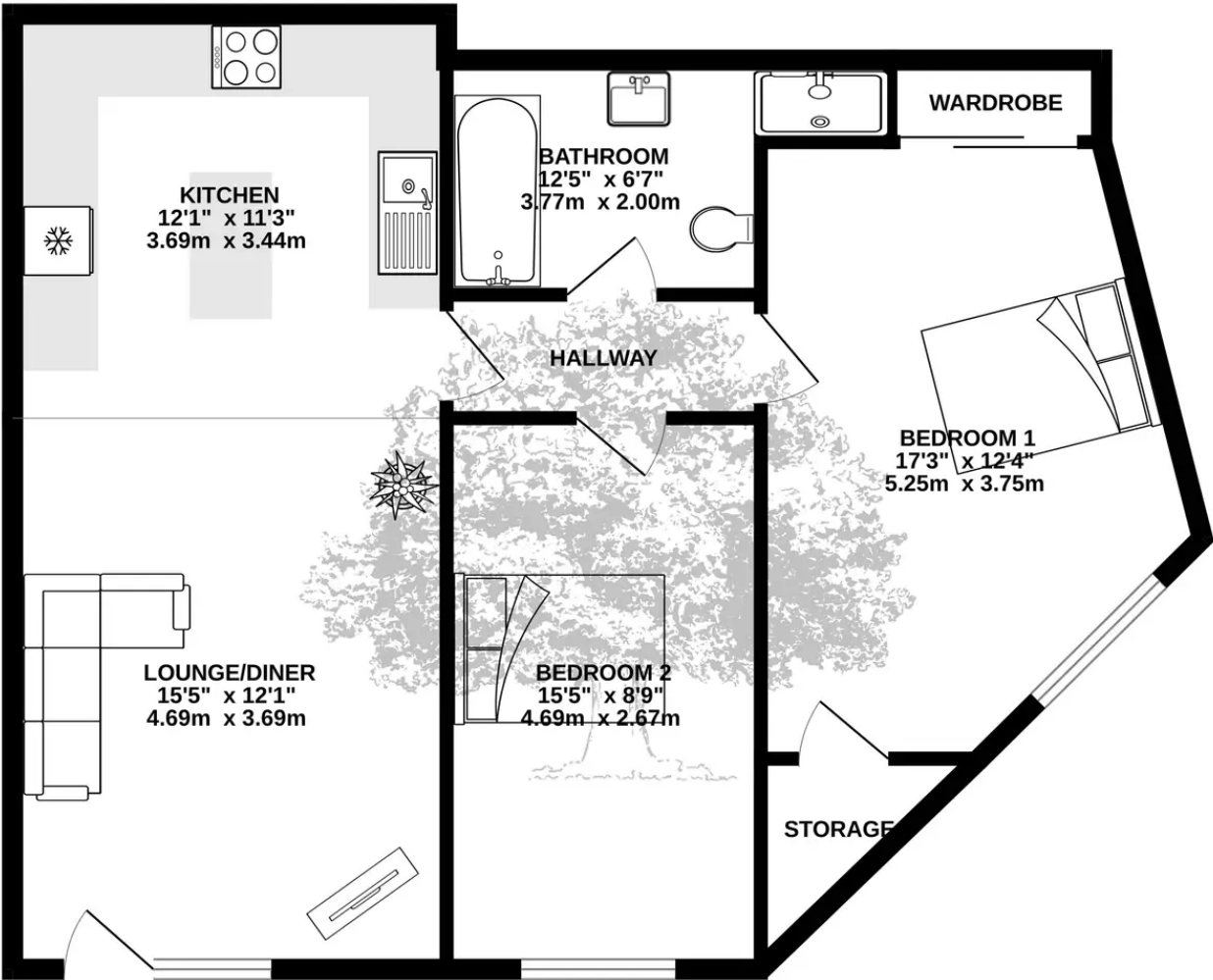
Services

All mains services excluding gas. Modern electric radiators throughout. Wired for fibre and sky. Service charge is £125 per month and includes all of the communal upkeep, building insurance, water and parish rates.





GROUND FLOOR
762 sq.ft. (70.8 sq.m.) approx.



TOTAL FLOOR AREA: 762 sq.ft. (70.8 sq.m.) approx.

Whilst every attempt has been made to ensure the accuracy of the floorplan contained here, measurements of doors, windows, rooms and any other items are approximate and no responsibility is taken for any error, omission or mis-statement. This plan is for illustrative purposes only and should be used as such by any prospective purchaser. The services, systems and appliances shown have not been tested and no guarantee as to their operability or efficiency can be given.
Made with Metropix ©2024



FINDING YOU A HOME SINCE 1972
B

Broadlands

Broadlands Estates, Library Place - JE2 3NL

01534 880770 • enquiries@broadlandsjersey.com • www.broadlandsjersey.com/

BROADLANDS

FINDING YOU A HOME SINCE 1972