

**Coopers**



**Coopers**

**Coopers**

Towpath Close, Longford, Coventry CV6 6RG

Guide Price £125,000



## Towpath Close

Longford, Coventry

Luxury ground floor modern apartment within the popular Hawkesbury Village area near Longford. Well presented with lounge/dining room, fitted kitchen, two well proportioned bedrooms and a modern bathroom with shower. Pleasant communal gardens and parking. Council Tax band: A

Tenure: Leasehold

EPC Energy Efficiency Rating: C

EPC Environmental Impact Rating:

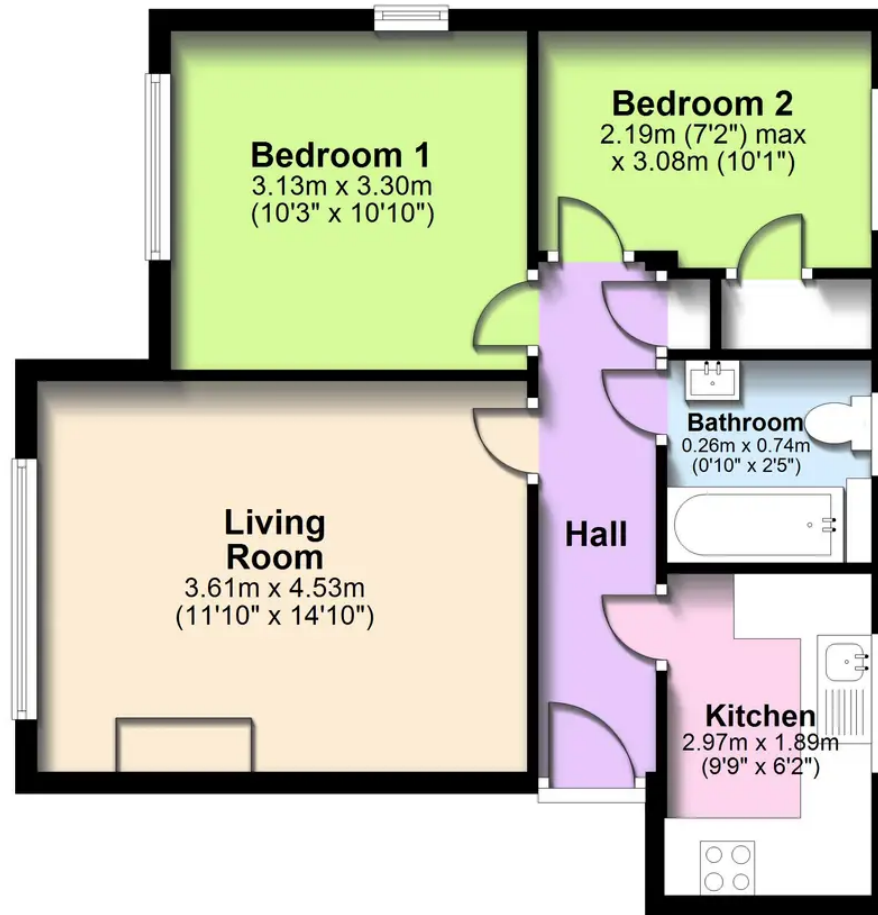
- Luxury ground floor modern apartment within a secluded cul de sac
- Popular location in Hawkesbury Village
- Well presented spacious lounge/dining room and modern fitted kitchen
- Two bedrooms and bathroom
- Pleasant communal gardens and parking
- No chain
- 976 years unexpired with a service charge of approximately £600 per quarter and ground rent of £180 pa.





## Ground Floor

Approx. 47.6 sq. metres (512.0 sq. feet)



This floor plan is for illustrative purposes only and should be used as such by any prospective purchaser. Whilst every attempt has been made to ensure the accuracy of this plan, measurements of doors, windows, rooms and other items are approximate and no responsibility is taken for any error, omission or mis-statement.

Plan produced using PlanUp.

Coopers Estate Agents

Coopers, 22 New Union Street - CV1 2HN

**Coopers**

024 7655 2841 • sales@cooperestateagents.com • www.cooperestateagents.com/

Coopers Chartered Surveyors Ltd, 22 New Union Street, Coventry, West Midlands

CV1 2HN, 024 7655 2841, sales@coopers-cov.com. Company Registration

Number: 6725089 / VAT number: 940 3555 34