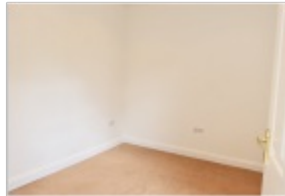


To Let 2 bed flat



- › PRIVATE GARDEN
- › TWO DOUBLE BEDROOMS
- › DOUBLE GLAZING
- › ALLOCATED OFF STREET PARKING
- › CLOSE TO TUBE

A large two bedroom ground floor garden flat located a short walk from the tube station. The property benefits from a large private garden, modern kitchen and double glazing. Available now.





A large two double bedroom ground floor garden flat located a short walk from the tube station.

The property has been redecorated throughout and benefits from a large private garden, modern kitchen allocated off street parking and double glazing.

Available 23/06/24.



34 Golders Green Road, London NW11 8LL

murray@dreamviewstates.co.uk

020 8455 0055

best
agent