

The Warrington

4 bedroom home



Cross Trees Park

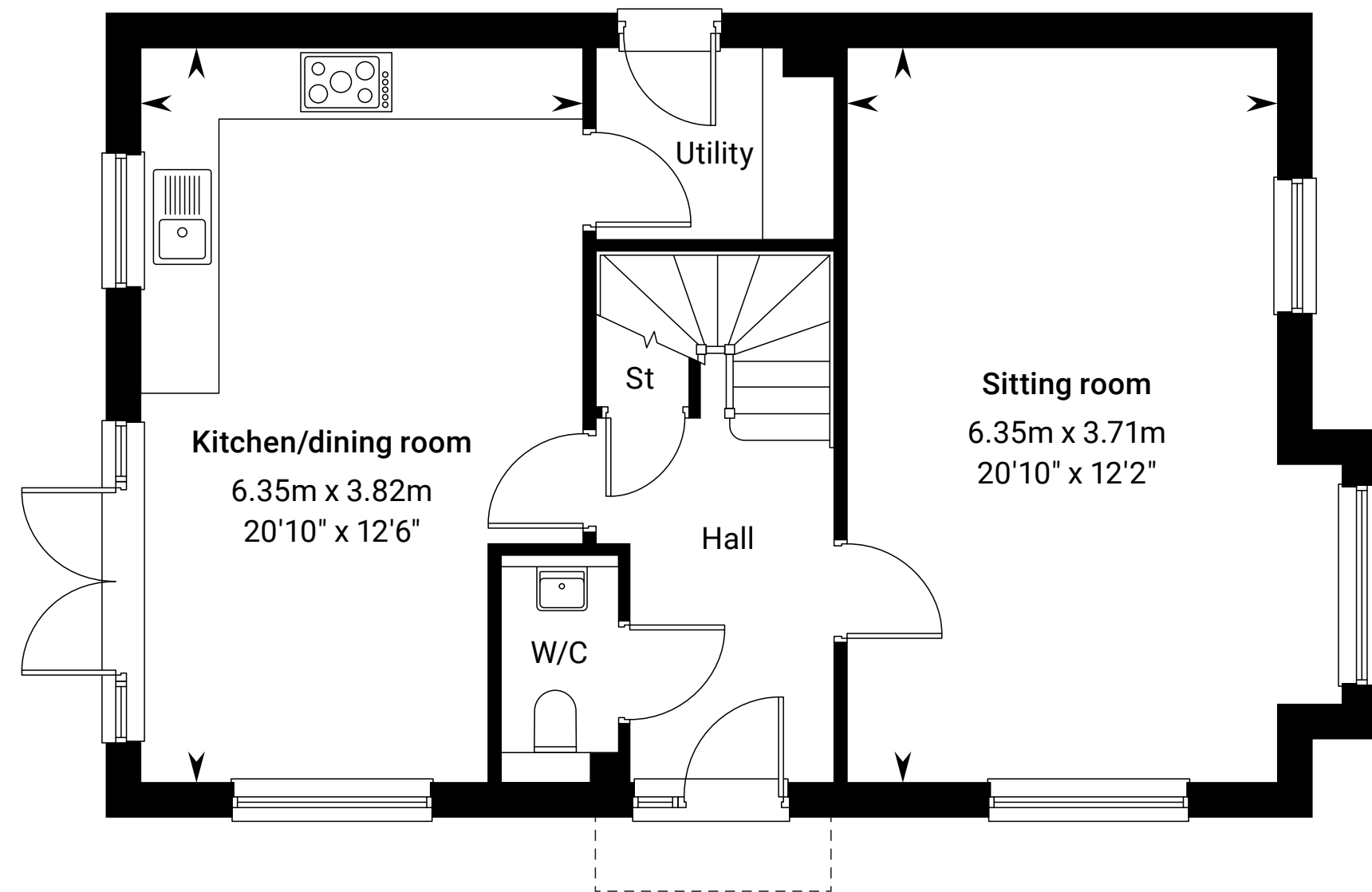
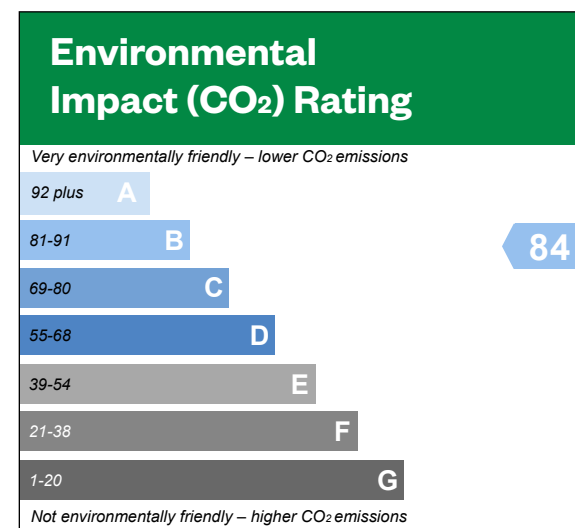
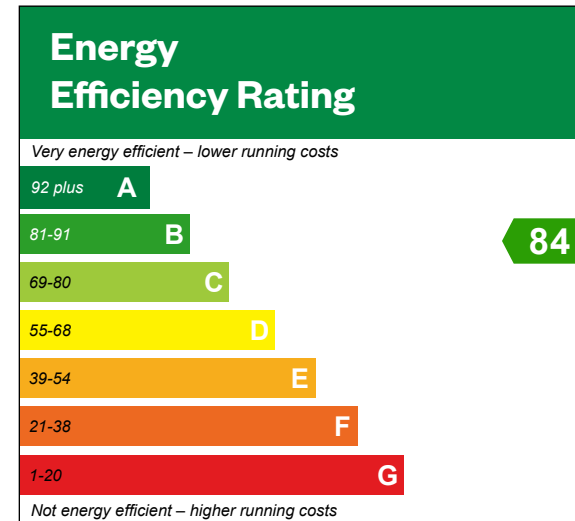
Legal & General Homes at Cross Trees Park



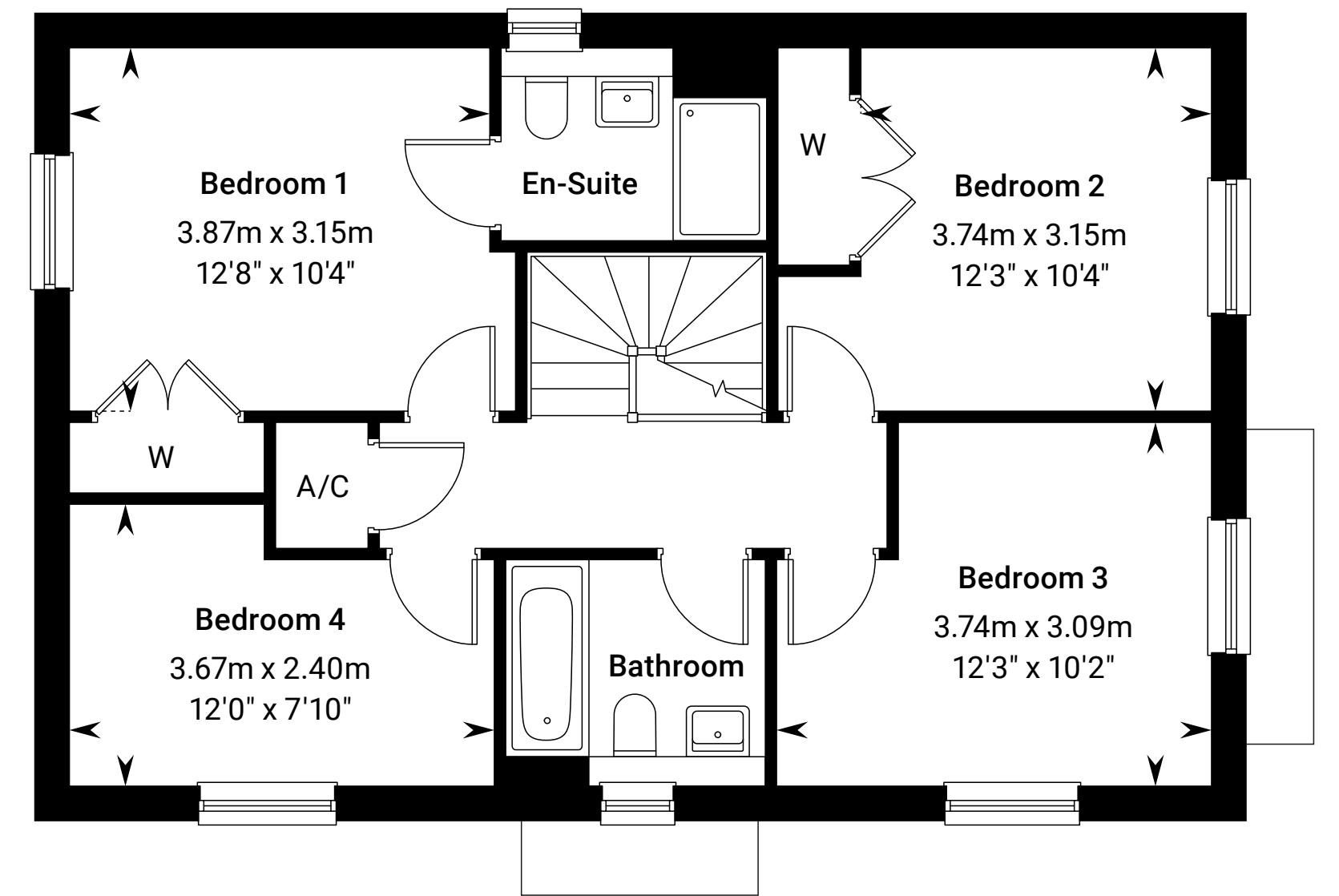
Computer generated image of The Warrington.

The Warrington

Plots 392, 400, 413, 418, 426,
451 & 474 – as shown
Plots 394, 412, 417, 425, 433,
472, 478 & 481 – handed



Ground floor



First floor

Please ask your Sales Consultant for further details. A/C: Airing cupboard. St: Store cupboard. W: Wardrobe.

The Consumer Protection from Unfair Trading Regulations 2008. Legal & General Homes operates a policy of continual product development and the specifications outlined in this brochure are indicative only. Information contained is accurate at date of publication on 09.04.2024. See the main brochure for the full Consumer Protection statement. Predicted Energy Assessment for properties that are incomplete. Once the property is completed, this rating will be updated and an official Energy Performance Certificate will be created for the property.