



182 Medina Road, Cosham

Offers in Region of £275,000

 **chinneckshaw**



182 Medina Road

Cosham, Portsmouth

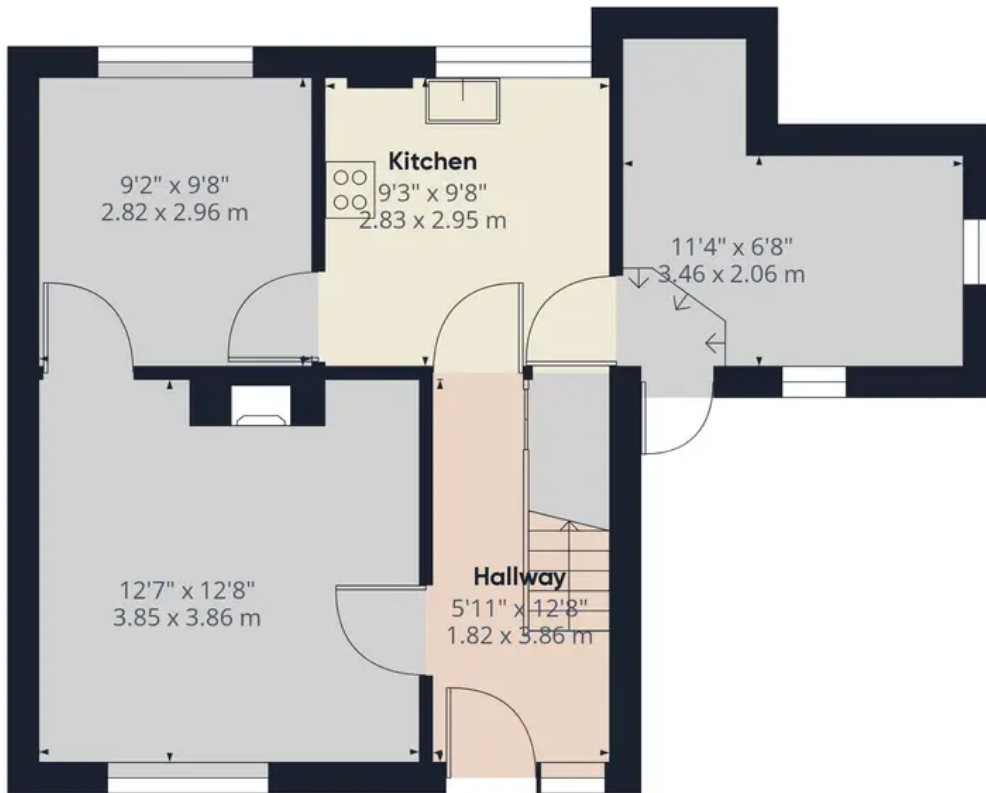
Ideally located, this large three bedroom house in Medina Road, Cosham is a great family home. It benefits from a quiet location and close to many amenities including local shops, schools and transport links giving you easy access to both the A27 & M27.

The entrance hall is light and bright and leads through to a good size Lounge which then has access through to a Dining Room so has space a plenty for you to create your own design ideas.

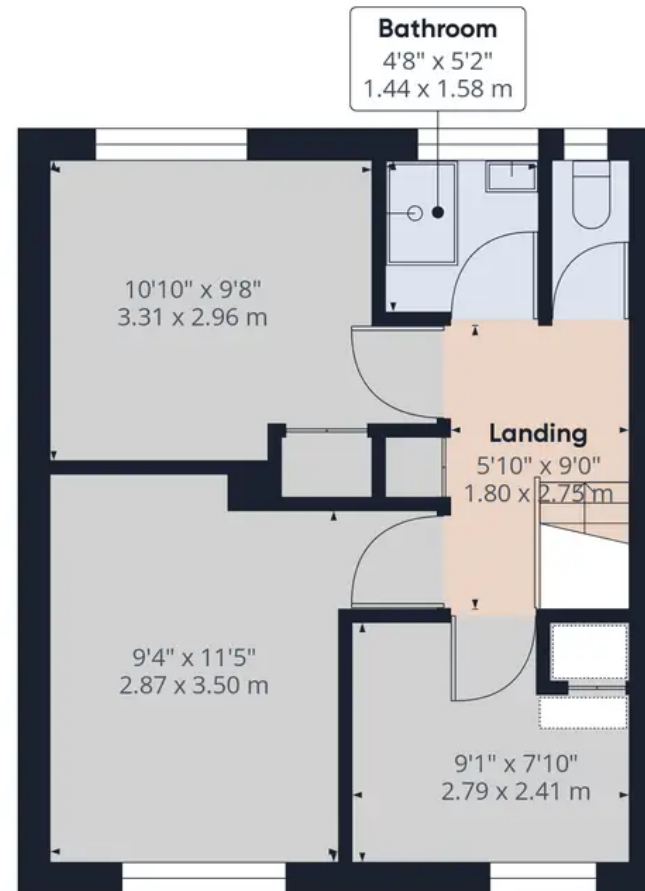
Next comes the Kitchen. Fitted with a range of base cabinets this room is very serviceable but does allow you the freedom to upgrade it to your own design at a later date. There is a window overlooking the garden to the rear aspect together with a door leading to a side extension/lobby area. This too could be changed quite easily to either extend your Kitchen or perhaps to make a separate reception room to use as a work home/office? On the first floor are three bedrooms off a large landing. Two good sized double rooms and a further large single room all of which have fitted wardrobes giving you that much needed extra storage space. The shower room and separate WC are white and modern but still provide you with scope to design your own. Outside is where this property really shines! You'll find a lovely front garden with mature roses and shrubs. The garden path leads not just to the front door but also to the side of the property and into the side and rear gardens. These are not overlooked and a great space for you to plan it as you want it.

With no forward chain we think this is a wonderful family home, and once decorated to your own taste would be ready for you to enjoy.





Ground Floor



Floor 1

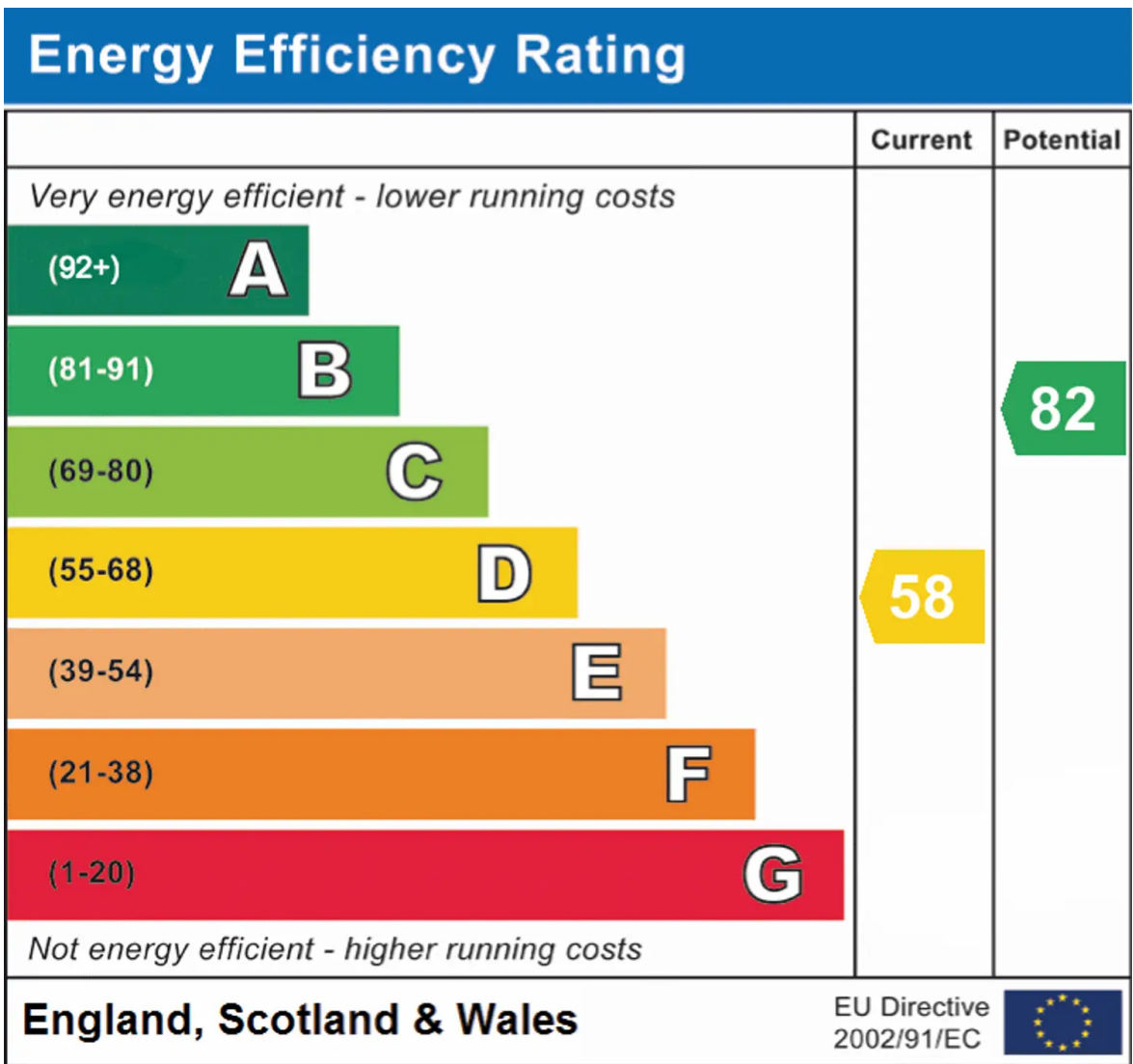
Approximate total area⁽¹⁾

903.62 ft²
83.95 m²

(1) Excluding balconies and terraces

While every attempt has been made to ensure accuracy, all measurements are approximate, not to scale. This floor plan is for illustrative purposes only.

GIRAFFE360



Chinneck Shaw

Bridge House, Milton Road, Portsmouth – PO3 6AN

023 9282 6731

hello@chinneckshaw.co.uk

www.chinneckshaw.co.uk/

Chinneck Shaw, Bridge House, Milton Road, PO3 6AN Consumer Protection from Unfair Trading Regulations 2008: These details are for guidance only and complete accuracy cannot be guaranteed. If there is any point which is of particular importance, verification should be obtained. The do not constitute a contract or part of a contract. All measurements are approximate. No guarantee can be given with regard to planning permissions or fitness for purpose. No apparatus, equipment, fixture or fitting has been tested. Items shown in the photographs are NOT necessarily included. Interested Parties are advised to check availability and make an appointment to view before travelling to see a property.