

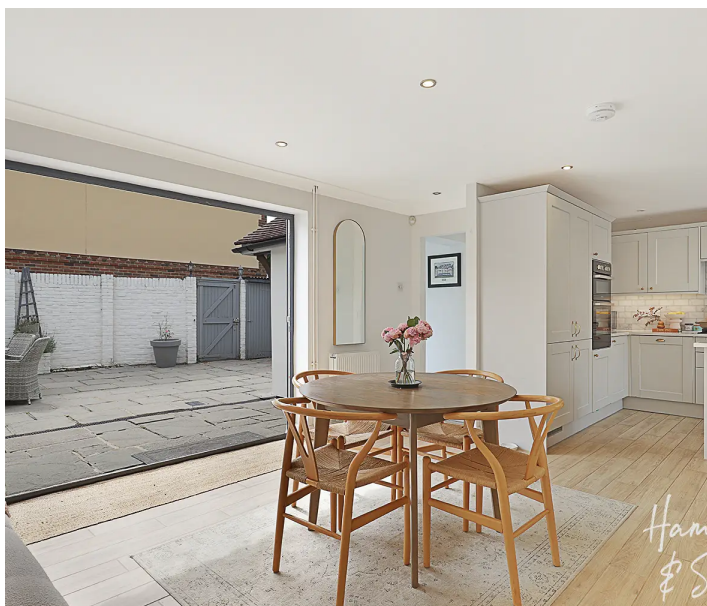
# Hemnal Street

Epping, Epping

Council Tax band: D

Tenure: Freehold

- TWO BEDROOM DETACHED HOME
- DOUBLE GLAZED
- MODERN KITCHEN
- WALLED COURTYARD STYLE GARDEN
- SHORT WALK TO HIGH STREET
- GAS CENTRAL HEATING
- TWO BATHROOMS





**Entrance Hall**

**Kitchen/ Diner**

23' 11" x 13' 5" (7.28m x 4.08m)

**Living Room**

15' 9" x 12' 9" (4.80m x 3.88m)

**WC/ Utility**

**First Floor**

**Bedroom One**

12' 6" x 10' 6" (3.82m x 3.21m)

**En-suite Shower Room**

**Bedroom Two**

11' 1" x 7' 1" (3.37m x 2.17m)

**Bathroom**

7' 10" x 6' 6" (2.39m x 1.99m)







Hammond  
& Smith



Hammond  
& Smith



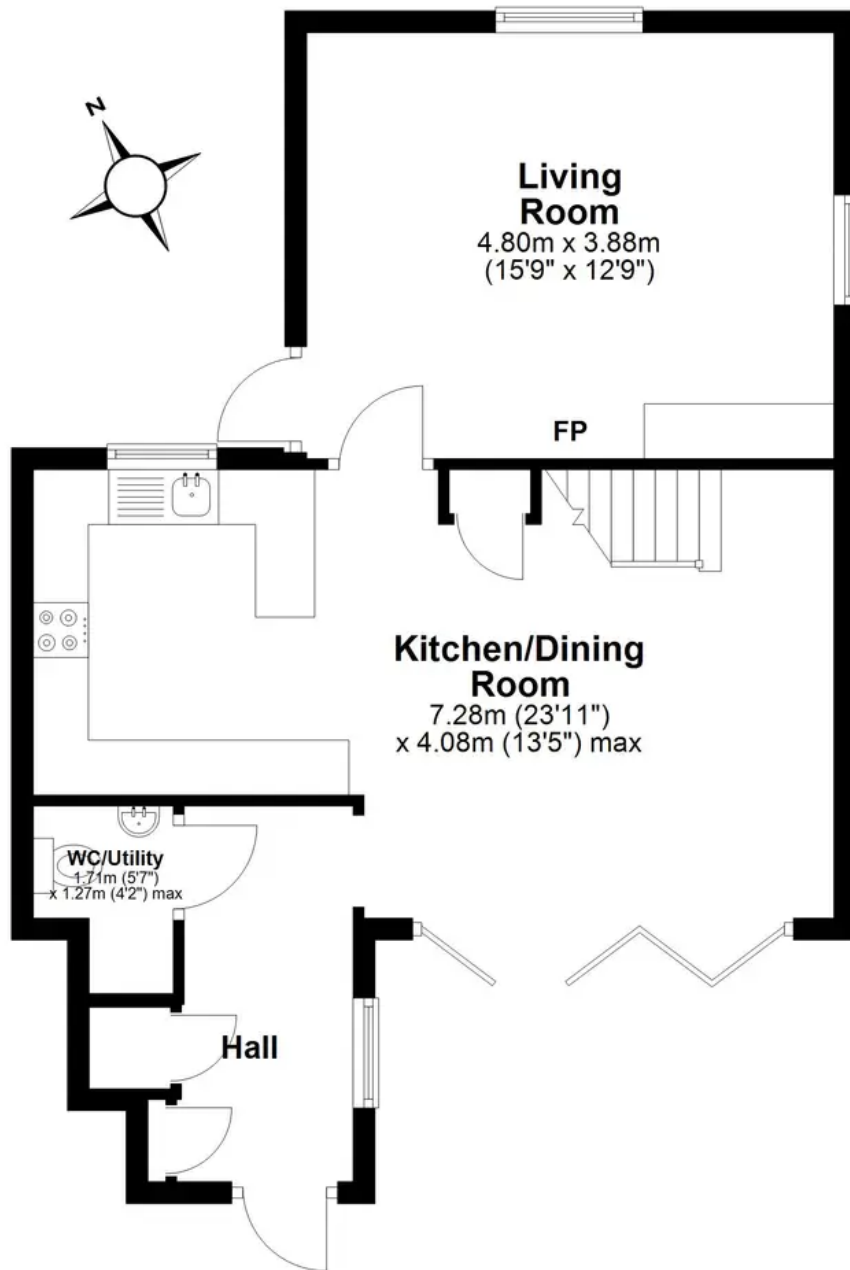
Hammond  
& Smith



Hammond  
& Smith

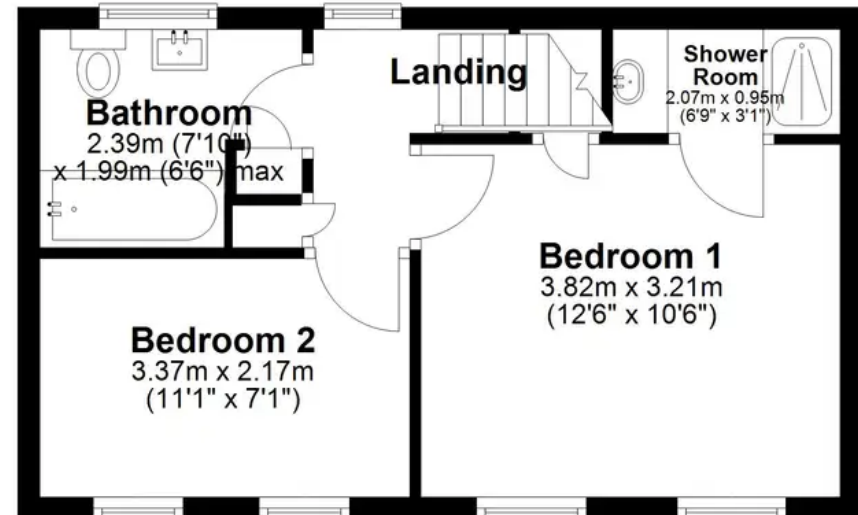
## Ground Floor

Approx. 54.7 sq. metres (589.1 sq. feet)



## First Floor

Approx. 31.0 sq. metres (333.8 sq. feet)



Total area: approx. 85.7 sq. metres (923.0 sq. feet)