



Warehouse Unit

Available To Let

Victor House, Hogg Lane, Grays West
Thurrock RM17 5QL

6,020 sq ft (559.3 sq m)

Established trade location in West Thurrock

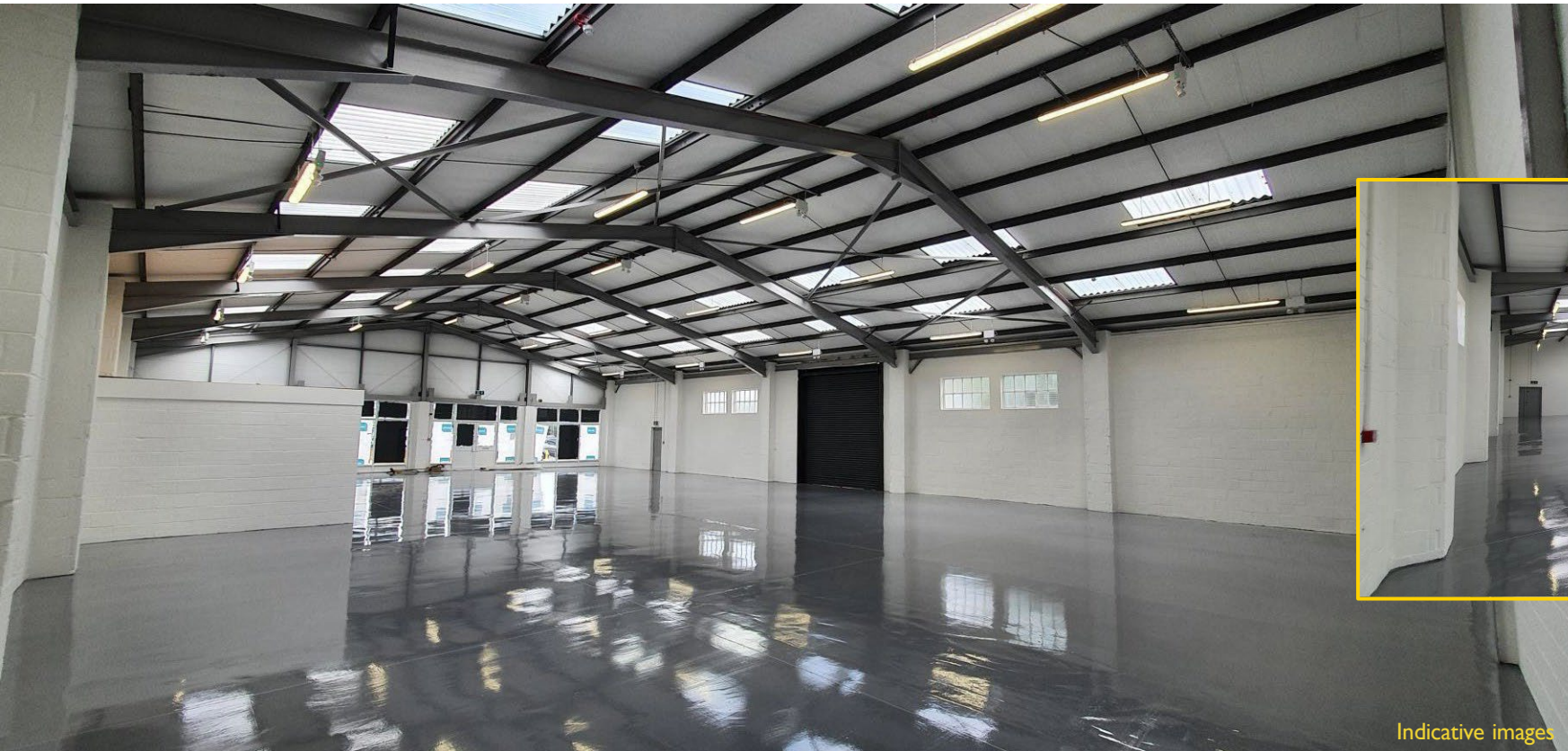


DESCRIPTION

Victor House is a self-contained warehouse, with over 95 ft of main road frontage. The unit is of steel portal frame construction with brickwork elevations under a new profile roof, with translucent roof lights.

Victor House is in an established trade location with Travis Perkins and Halfords nearby, but would also offer a great opportunity for car showrooms, manufacturing, production, and logistics.

- New roof
- 4m eaves height rising to 6.6m.
- Self-contained secure yard
- Extensive parking spaces
- 3 Phase power



Indicative images

Indicative images





LOCATION

Victor House is situated on Hogg Lane, close to the Grays town centre and its retail amenities. Hogg Lane (A102) connects to the A13 and is approximately 20 miles from the centre of London (via the A13) and 3 miles from junction 30 of the M25. Grays Train Station (0.4 miles) provides services to London Fenchurch St (35 min) and Southend (37 min).



GRAYS TRAIN STATION 0.4 mi

LAKESIDE SHOPPING CENTRE 2.4 mi

A13 2.6 mi

M25 3.9 mi



Indicative images

Indicative images



TENURE:

Leasehold

RENT:

On application

RATEABLE VALUE:

£47,500

BUSINESS RATES:

Thurrock Council

LEGAL COSTS:

Each party to bear their own costs

EPC:

C – 75

VAT:

VAT is payable if applicable

For further information please contact:

Chris Wade

chris.wade@strettons.co.uk

07816 505 718

Harry Robins

harry.robins@strettons.co.uk

07866 075 899



Strettons
Waltham House
11 Kirkdale Road London
E11 1HP
020 8520 1918