



Cedar Court La Grande Rue, St. Mary

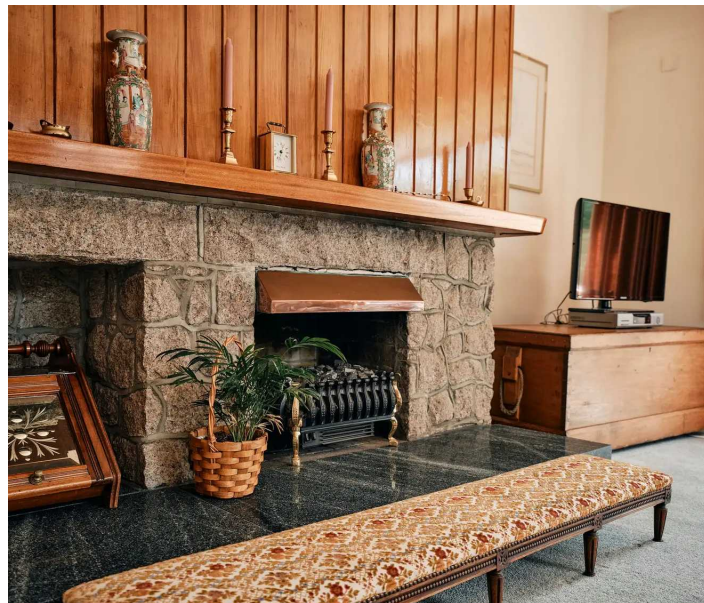
Asking **£1,100,000**

BROADLANDS

FINDING YOU A HOME SINCE 1972

Cedar Court La Grande Rue, St Mary

- Spacious bungalow in need of updating
- Versatile accomodation
- Close on 2,000 square feet
- Four reception rooms
- Three bedrooms
- Large established garden
- Double garage and lots of parking
- Lots of potential
- Rural St Mary
- Walking distance to St Mary's gastropub
- WhatsApp Don 07829 917172 /
don@broadlandsjersey.com



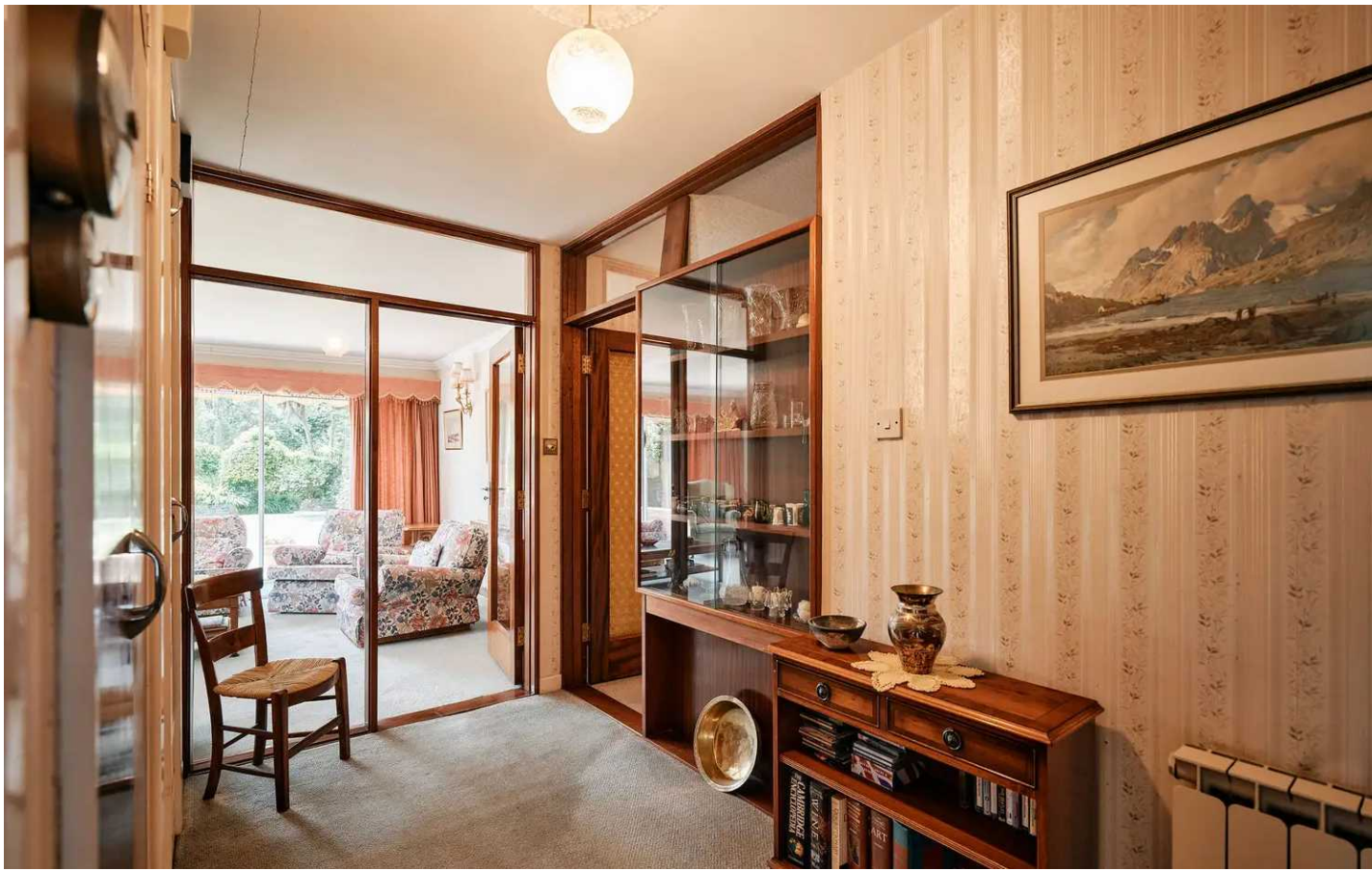
Cedar Court La Grande Rue, St Mary

A spacious bungalow located in a rural part of St Mary requiring modernisation throughout.

The accommodation - close to 2,000 square feet - comprises hallway, living room, dining room, kitchen/breakfast room, den/office, 3 bedrooms, 2 bathrooms, shower room and utility. The versatile layout allows for the smallest bedroom to be utilised as a study and/or the den/office to be used as a further bedroom.

The property has a double garage and plenty of driveway parking. The established south west facing garden gets plenty of sunshine and comprises patio, large lawned area bordered by established trees and shrubs, and separate area suitable for nurturing as a vegetable patch or herb garden.





Living

Twenty foot living room with feature fireplace and floor to ceiling sliding doors to garden. Separate dining room, kitchen/breakfast room with fitted breakfast bar. Versatile room ideal as a den or office could also be used as a further bedroom.

Sleeping

Large main bedroom with ensuite bathroom. Two further bedrooms - one currently used as a study. House bathroom and separate shower room.

Outside

Large, established sunny garden comprising patio ideal for alfresco dining and relaxing, generous lawn and separate area ideal for cultivation and a vegetable patch and/or herb garden. Double garage and ample parking to front.

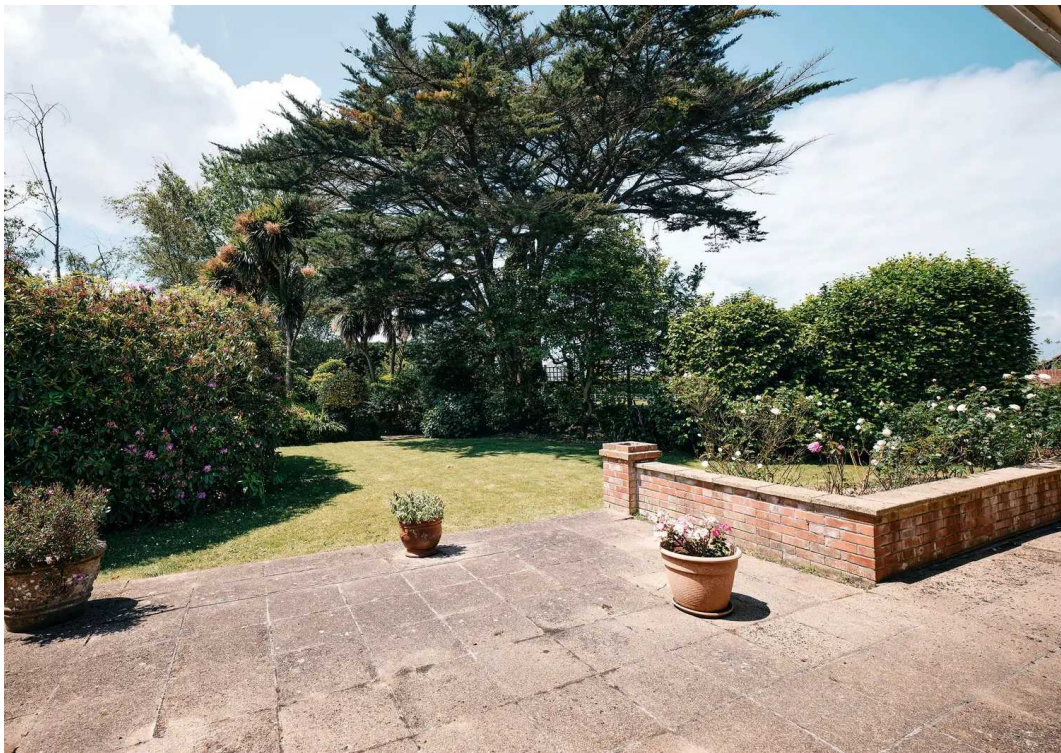
Services

Borehole water. Septic tank and soakaway. Oil fired central heating.

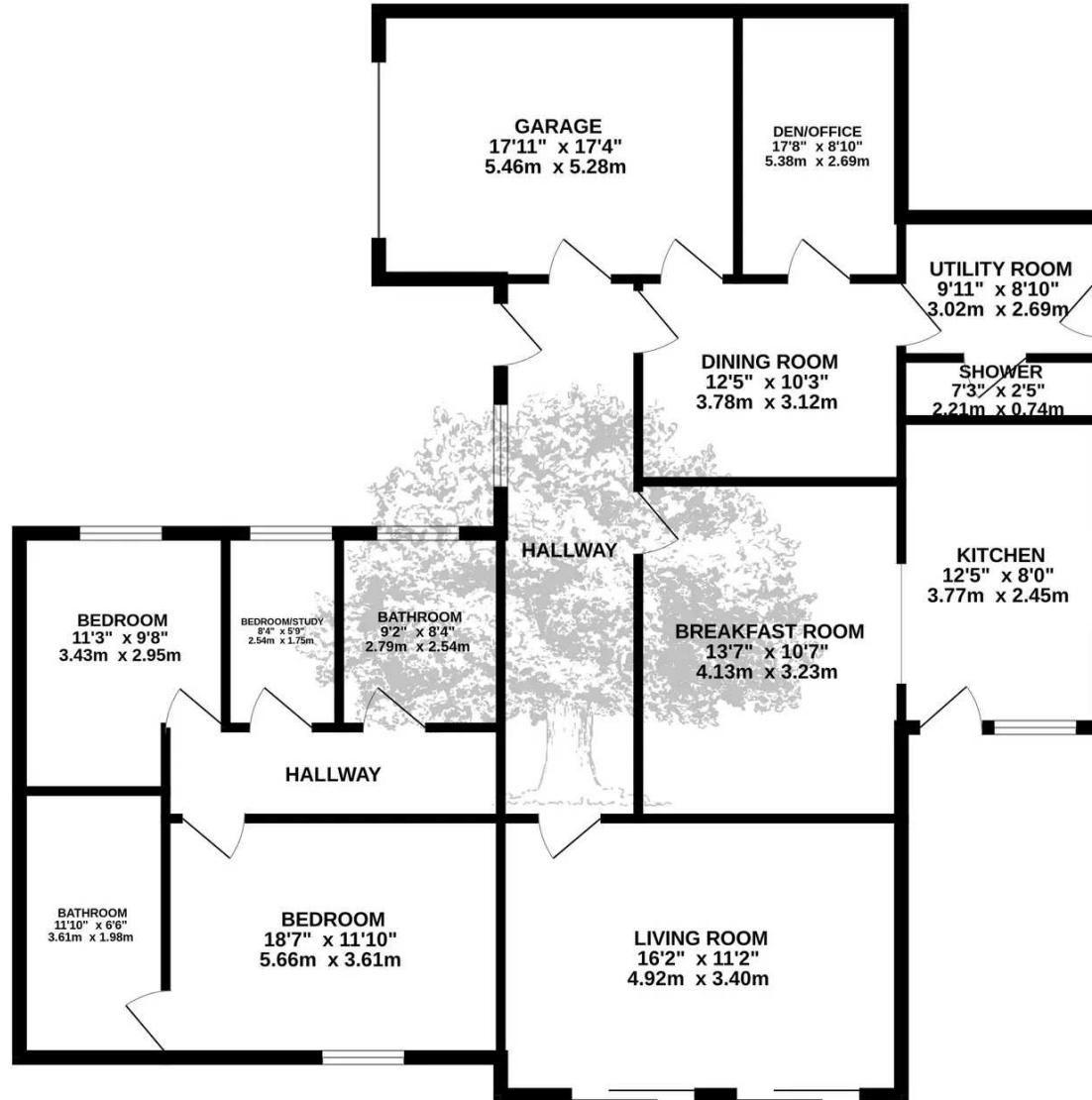
Education

The house is in the catchment area for St John primary and Grainville secondary schools





GROUND FLOOR
1918 sq.ft. (178.2 sq.m.) approx.



TOTAL FLOOR AREA : 1918 sq.ft. (178.2 sq.m.) approx.

Whilst every attempt has been made to ensure the accuracy of the floorplan contained here, measurements of doors, windows, rooms and any other items are approximate and no responsibility is taken for any error, omission or mis-statement. This plan is for illustrative purposes only and should be used as such by any prospective purchaser. The services, systems and appliances shown have not been tested and no guarantee as to their operability or efficiency can be given.

Made with Metropix ©2024



Broadlands

Broadlands Estates, Library Place - JE2 3NL

07829 917172 • don@broadlandsjersey.com • www.broadlandsjersey.com/

BROADLANDS

FINDING YOU A HOME SINCE 1972