



THE
BLACKHEATH
COLLECTION
APARTMENTS



**KIDBROOKE
VILLAGE**
ROYAL BOROUGH OF GREENWICH
SE3

Berkeley
Designed for life

THE APARTMENTS
A SECRET GARDEN
CREATED JUST FOR YOU

Residents in The Blackheath Collection Apartments have access to the Podium Garden, a beautiful serene space exclusively for their relaxation. Beneath the dappled shade of the birch trees, there are seating areas, play spaces and a nature trail to explore, with many of the apartments looking out over this peaceful scene. It's effectively your secret garden, waiting to be discovered.

THE APARTMENTS LIVING ROOM WITH A VIEW

Your balcony or terrace is your own space for basking in the sunshine or hosting al fresco suppers. Take a seat, enjoy the fresh air, and watch the world go by.

KIDBROOKE VILLAGE LONDON'S GREEN OASIS



THE
BLACKHEATH
COLLECTION

THE APARTMENTS

Computer Enhanced Image of Kidbrooke Village is indicative only.



KIDBROOKE VILLAGE OUTSIDE SPACES TO SHARE & ENJOY

Kidbrooke Village is a haven of 86 acres of open space equivalent to 45 football pitches*. It's very diverse too, including large parks, smaller green pockets, wetlands, wildflower meadows, private gardens, sports pitches and playgrounds.

Whether you choose to walk, run, play, picnic, or just sit back and enjoy being amongst the sights and sounds of nature, Kidbrooke Village is undoubtedly good for your wellbeing.

Photography of Cator Park, Kidbrooke Village.
*45 Wembley stadium sized football pitches



Photography of The Village Centre, Kidbrooke Village.



Photography of Sutcliffe Park, Kidbrooke Village.



Photography of North Cator Park play area, Kidbrooke Village.



KIDBROOKE VILLAGE AWARD-WINNING PARK LIFE



Photography of North Cator Park, Kidbrooke Village.

Cator Park, just a few minutes' walk from The Blackheath Collection Apartments, is a new park which was created as the natural centrepiece of Kidbrooke Village. It's a vibrant river of colour, meadow flowers and wild landscaping winding through the village.

Here, Berkeley works in partnership with London Wildlife Trust and HTA Design, rewilding the park to increase the diversity of birds, mammals and insects living in this wonderful natural space. It's a long-term project, with planting increasing year-on-year. To date, more than 750 mature trees have been added, making a significant impact on local air quality.

The result of all this work was recognised at the 2020 Landscape Institute Awards. Cator Park won the **Sir David Attenborough Award for Enhancing Biodiversity**, as well as the **Overall President's Award for the best landscape scheme**.



“EVERYTHING THAT'S HAPPENING AT KIDBROOKE VILLAGE IS HELPING TO MAKE IT A MORE WILDLIFE-RICH ENVIRONMENT THAT FUTURE GENERATIONS CAN ENJOY.”

David Mooney
London Wildlife Trust

APARTMENTS

THE
BLACKHEATH
COLLECTION



Photography of Kidbrooke Village.



The site plan is indicative only and subject to change. In line with our policy of continuous improvement we reserve the right to alter the layout, building style, landscaping and specification at anytime without notice.

KIDBROOKE VILLAGE ALL YOU NEED ON YOUR DOORSTEP



- 1 The Village Centre
- 2 Sainsbury's Local
- 3 Pegler Square
- 4 The Depot



The Village Centre is the one-stop-spot for Kidbrooke Village, convenient for shopping, travel and meeting friends, just a few minutes' walk from the Blackheath Collection Apartments.

You'll find a Pure Gym, Sainsbury's Local, The Depot pub and dining, dentist†, doctor† and Kidbrooke train station, where services into London Bridge take just 17 minutes*.



*Planned in future phase of development for Kidbrooke Village, subject to change. Photography of The Depot, Sainsbury's Local and The Village Centre Concierge, Kidbrooke Village. Lifestyle image of the Pharmacy is indicative only. *All journey times are approximate. Source: tfl.gov.uk

THE CLUBHOUSE WELCOME TO THE CLUB

At Kidbrooke Village you can revel in everything London has to offer, and come home to a green oasis which promotes wellbeing and a healthy lifestyle. The Blackheath Collection Apartment residents have the special benefit of access to the nearby private Clubhouse, with its own 24-hour Concierge, where you can enjoy staying fit and healthy in the state-of-the-art gym and bespoke swimming pool.

If you're feeling a little less active, settle back to enjoy a movie with family and friends in the private cinema room. Of course, work is usually never far away, so the Clubhouse also boasts a business suite and Wi-Fi lounge to use when you have to quickly dive back into business.



Lifestyle imagery is indicative only.



WHETHER YOU WANT TO RELAX IN THE POOL, GET ACTIVE IN THE GYM OR DO A SPOT OF WORK, THE RESIDENTS-ONLY CLUBHOUSE CATERS FOR IT ALL.

Lifestyle photography of the Clubhouse, Kidbrooke Village.

YOUR HOME

FOR HOW YOU LIVE

The Blackheath Collection Apartments are designed for the way you live today. The open plan living room has a choice of flooring from the Dusk and Dawn palettes, and big windows to let the light and sunshine in.



Showhome photography of an apartment in The Blackheath Collection, showing the Dawn palette is indicative only. Furniture and shelving layouts are artistic representation.



Computer Generated Image of an apartment in The Blackheath Collection, showing the Dusk palette is indicative only.

YOUR HOME

BEAUTIFUL AND FUNCTIONAL

The individually designed kitchens are a seamless blend of looks and functionality. The layouts, lighting and worktop space offer maximum practicality, and a range of Bosch appliances make life as easy as possible. You'll be inspired to take cooking to new heights.

YOUR HOME

GOOD MORNING, GOOD NIGHT

And so to bed, in your luxurious haven of peace and privacy. Wake up, and open the curtains to morning sunshine and open views. It's the bedroom you've been dreaming of.



Showhome photography of an apartment in The Blackheath Collection, showing the Dawn palette is indicative only. Furniture layout and wall fittings are artistic representation.

YOUR HOME UNIQUE AND TAILORED

The Blackheath Collection apartment interiors take inspiration from Mid-Century sculptural forms, geometric shapes and finishes. This modern classic look is available in two colour palettes, Dawn and Dusk. Each palette features monolithic forms and textured materials to create living spaces which are perfect for relaxing or entertaining.



DAWN PALETTE

Relaxed and natural, the Dawn palette features restful neutral shades.

- 1. White Levanto Marble Laminate Splashback
- 2. Matt Dove Grey Kitchen Base Units
- 3. Halifax White Oak Tall Kitchen Units
- 4. Light Oak Wood-effect Kitchen Floor
- 5. Bathroom Feature Hexagon Mosaic

DUSK PALETTE

The Dusk palette is sleek and contemporary, with rich warm shades in tones of dark oak and stone.

- 6. Anthracite Pietra Laminate Splashback
- 7. Matt Silver Grey Kitchen Base Units
- 8. Nero Oak Tall Kitchen Units
- 9. Mountain Oak Wood-effect Kitchen Floor
- 10. Bathroom Feature Block Mosaic



Photography is indicative only. Colour and finishes will vary.

YOUR HOME SPECIFICATION

TYPICAL 2 AND 3 BEDROOM APARTMENT

KITCHENS

- Individually designed layouts
- Silestone worktops in light or dark colour schemes
- Full height laminate splashback
- Stainless steel undermount sink with drainer grooves to worktop and Cascata square spout mixer tap in chrome finish
- Lacquered finish to wall and base unit doors and end panels, laminate to tall units with recessed handles in light or dark colour schemes
- Energy efficient recessed LED lighting to wall units where appropriate
- Concealed multi-gang appliance panel and brushed stainless steel socket outlets above work surfaces where appropriate
- Oak wood-effect flooring in light or dark colour scheme
- Bosch touch control ceramic hob
- Telescopic Hood extractor
- Bosch integrated microwave
- Bosch Integrated oven
- Integrated fridge / freezer
- Integrated wine cooler
- Integrated dishwasher
- Space saving recycling bins to under sink unit
- Smart Cubes open wall shelving

EN-SUITE BATHROOM AND SHOWER ROOM

- Single ended white bath with frameless glass bath screen, bath filler and laminated bath panel
- White rectangular shower tray with sliding glass shower screen
- Thermostatic wall mounted bath / shower control panel
- Chrome ceiling-mounted showerhead and hand-held shower above bath
- White round wash hand basin with chrome mixer tap in the en-suite bathrooms
- White square wash hand basin with chrome mixer tap in the shower rooms
- White wall mounted WC pan with soft-close seat / cover and concealed cistern with dual-flush plate
- Chrome finish ladder style thermostatically controlled electric towel rail to bathrooms and shower rooms
- Large format porcelain tiles with feature tiles to selected walls
- Large format porcelain tile floor finishes
- Storage cabinet above WC and shaver socket to bathrooms and shower room
- Bespoke large mirror to en-suite bathroom and circular mirror to shower room
- Mechanical Ventilation with Heat Recovery
- Energy efficient downlights

ELECTRICAL FITTINGS

- Energy efficient ceiling downlights
- Lighting to utilities / services / coats cupboards
- Television points to living room and bedroom 1
- Telephone and data points to living room and bedroom 1
- White switch and socket fittings
- USB sockets to kitchen and bedroom 1

HEATING / PLUMBING

- Heating and hot water to all apartments from communal system with metered water and heat supply to each apartment
- Radiator heating throughout
- Plumbing for washer / dryer within vented utility cupboards

INTERIOR FINISHES

- Textured veneer finished apartment entrance doors
- Timber white painted internal doors
- White painted skirting and architraves
- Knurled lever handle on rose, door handles throughout
- Bespoke fitted wardrobe with full height sliding doors to bedroom 1, internal fittings include rails and shelves with concealed lighting
- Oak wood-effect flooring to living room, hallway and kitchen, carpet floor finishes to bedrooms



BALCONIES / TERRACES

- Well-proportioned balconies and terraces with metal balustrades and aluminium decking or paving finish where indicated

SECURITY

- Telguard audio / visual entry via TV and domestic / mobile phone linked to entrance door (may require telephone connection and call waiting service - to be provided by purchaser)
- Mains powered smoke and heat detector
- 'Secured By Design' standards to apartment entrance doors to meet Metropolitan Police requirements
- Secure bin and bike storage within secure undercroft car park
- Concierge service and monitored CCTV

PEACE OF MIND

- 999 year lease
- All apartments benefit from 10-year build warranty
- Residential sprinkler system to every apartment

LIFTS

- Passenger lifts serving each core and all levels

MAIN ENTRANCE AND LIFT LOBBIES

- Glass doors and feature finishes to main apartment block entrance and lift lobbies
- Carpeted floors and painted walls to lift lobbies and communal corridors to levels above podium level
- Tiled floors and painted walls to lift lobbies and communal corridors to ground and podium levels

EXTERNAL COMMUNAL AREAS

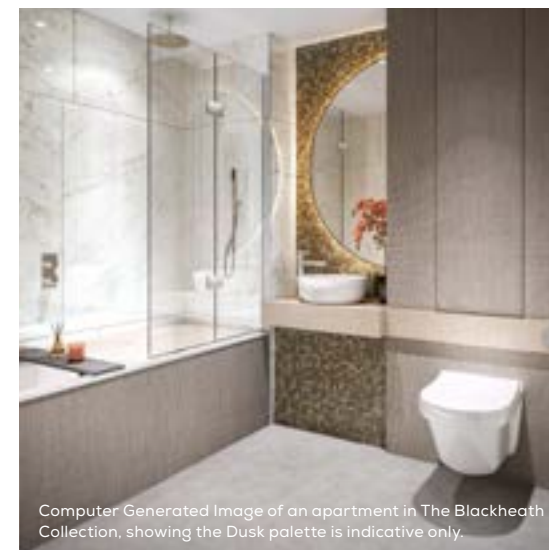
- Podium garden with under 5s play area
- A managing agent will administer the effective operation and maintenance of communal facilities

CAR PARKING

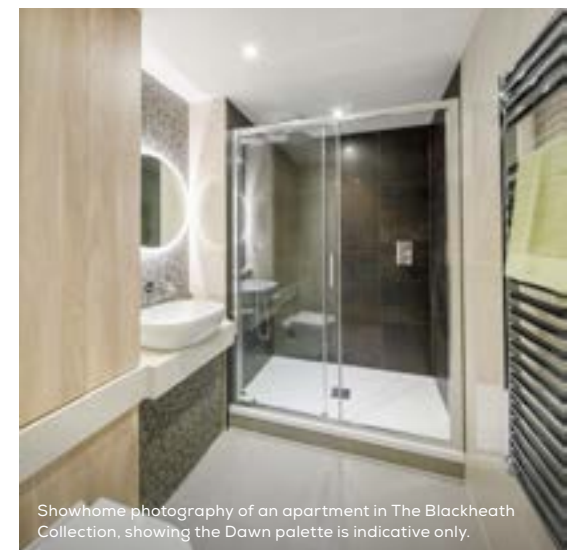
- General right to park in undercroft car park, subject to separate negotiation

RESIDENTS' FACILITIES WITHIN ESTATE BOUNDARIES

- Bespoke swimming pool
- Gymnasium
- Residents' cinema
- Business suite
- Wifi lounge
- 24-hour Concierge



Computer Generated Image of an apartment in The Blackheath Collection, showing the Dusk palette is indicative only.



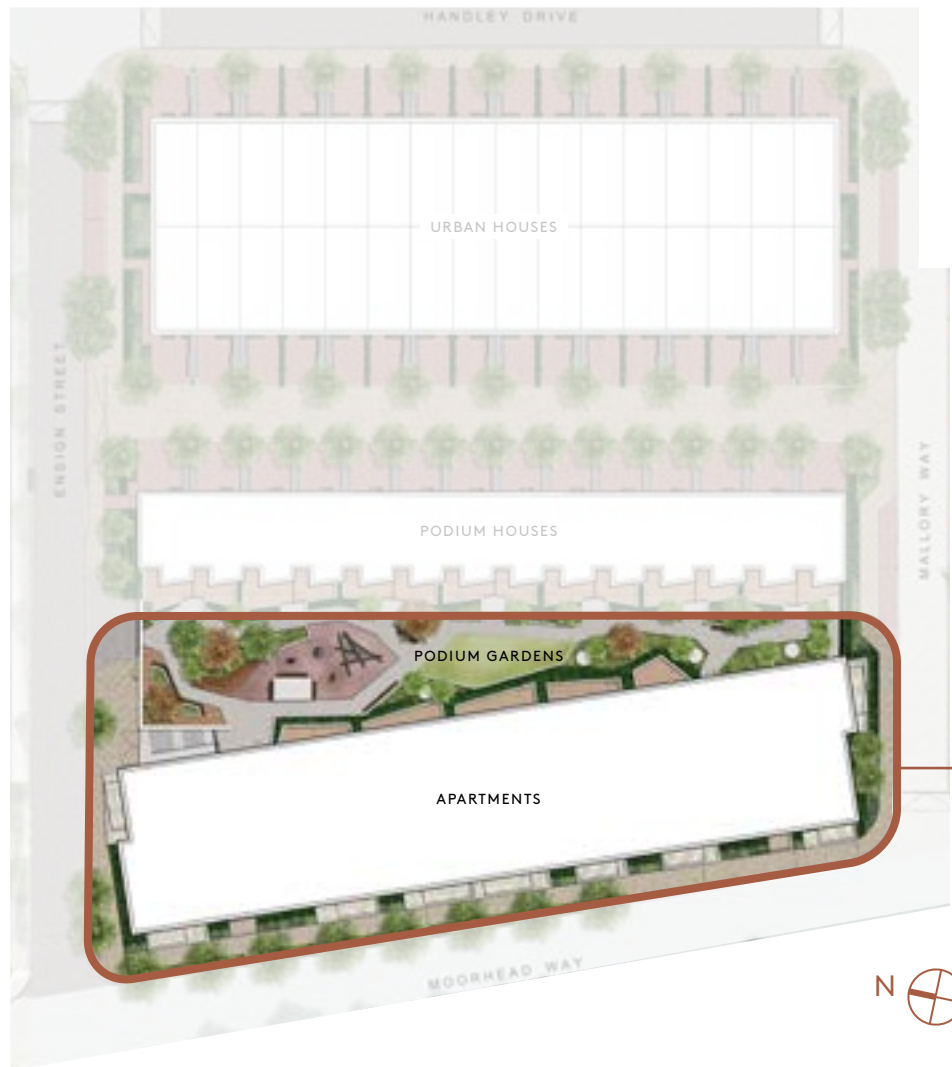
Showhome photography of an apartment in The Blackheath Collection, showing the Dawn palette is indicative only.

Your attention is drawn to the fact that in rare circumstances it may not be possible to obtain the exact products or materials referred to in the specification. Berkeley reserves the right to alter, amend or update the specification, which may include changes in the colour, material or brand specified. In such cases, a similar alternative will be provided. Berkeley reserves the right to make these changes as required. A number of choices and options are available to personalise your home. Choices and options are subject to timeframes, availability and change.



THE
BLACKHEATH
 COLLECTION

Comprising the Apartments, Urban Houses and Podium Houses, The Blackheath Collection is one of several distinctive neighbourhoods in Kidbrooke Village. It's also just a 14 minute* walk from one of London's best-known older villages, Blackheath, giving you a complementary lifestyle to enjoy.



The site plan is indicative only and subject to change. In line with our policy of continuous improvement we reserve the right to alter the layout, building style, landscaping and specification at anytime without notice. †Planned in future phase of development. *All journey times are approximate. Source: google.co.uk/maps*. Walking time to Blackheath Halls. Football pitch equivalent based on Wembley Stadium pitch size.



THE
BLACKHEATH
 COLLECTION

FLOORPLANS ACCOMMODATION SCHEDULE

APARTMENTS

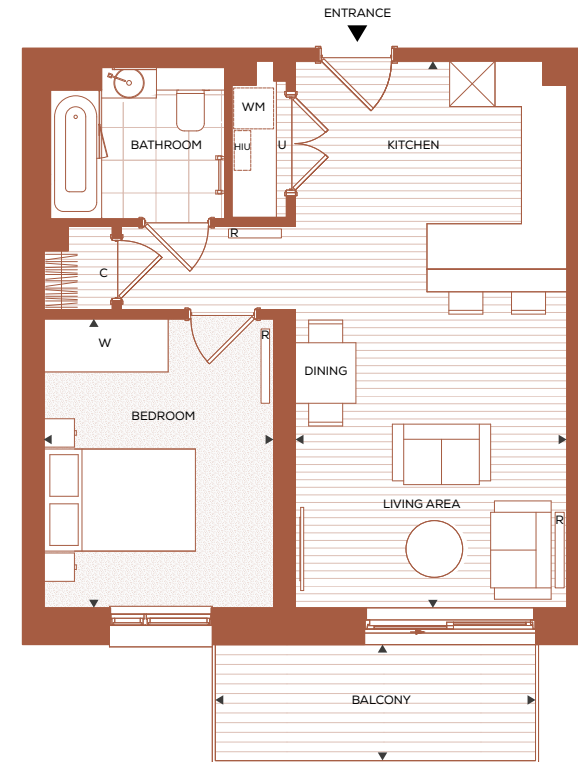
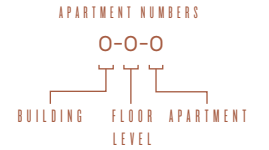
PLOT NO	BEDS	AREA SQ M	AREA SQ FT	FLOOR	PAGE NO.	PLOT NO	BEDS	AREA SQ M	AREA SQ FT	FLOOR	PAGE NO.
1-0-1	2	79.8	859.0	0	52	2-1-9	1	50.0	538.2	1	31
1-0-2	3	94.9	1,021.5	0	56	2-2-1	2	68.3	735.2	2	43
1-0-3	2	76.2	820.2	0	50	2-2-2	1	52.7	567.3	2	36
1-0-4	2	74.0	796.5	0	46	2-2-3	1	50.0	538.2	2	31
1-1-2	2	74.1	797.6	1	48	2-2-4	1	50.0	538.2	2	32
1-1-3	2	74.1	797.6	1	47	2-2-5	2	64.6	695.3	2	40
1-2-2	2	74.1	797.6	2	48	2-2-6	2	74.1	797.6	2	48
1-2-3	2	74.1	797.6	2	47	2-2-7	2	74.1	797.6	2	47
1-3-2	2	74.1	797.6	3	48	2-2-8	2	64.6	695.3	2	39
1-3-3	2	74.1	797.6	3	47	2-2-9	1	50.0	538.2	2	31
1-3-6	2	77.1	829.9	3	51	2-3-1	2	68.3	735.2	3	43
1-4-1	2	64.6	695.3	4	40	2-3-2	1	52.7	567.3	3	36
1-4-2	2	74.1	797.6	4	48	2-3-3	1	50.0	538.2	3	31
1-4-3	2	74.1	797.6	4	47	2-3-4	1	50.0	538.2	3	32
1-4-4	2	64.6	695.3	4	39	2-3-5	2	64.6	695.3	3	40
1-4-5	1	50.0	538.2	4	31	2-3-6	2	74.1	797.6	3	48
1-4-6	2	77.1	829.9	4	51	2-3-7	2	74.1	797.6	3	47
1-4-7	2	72.4	779.3	4	44	2-3-8	2	64.6	695.3	3	39
1-5-1 P	2	64.6	695.3	5	40	2-3-9	1	50.0	538.2	3	31
1-5-2 P	2	74.1	797.6	5	48	2-4-1	2	68.3	735.2	4	43
1-5-3 P	3	86.1	926.8	5	55	2-4-2	1	52.7	567.3	4	36
1-5-4 P	2	80.3	864.3	5	54	2-4-3	1	50.0	538.2	4	31
1-5-5 P	1	50.4	542.5	5	34	2-4-4	1	50.0	538.2	4	32
2-0-1	1	58.1	625.0	5	38	2-4-5	2	64.6	695.3	4	40
2-0-2	1	52.7	567.0	0	35	2-4-6	2	74.1	797.6	4	48
2-0-3	2	76.0	818.0	0	49	2-4-7	2	74.1	797.6	4	47
2-0-4	2	68.0	731.0	0	42	2-4-8	2	64.6	695.3	4	39
2-0-5	2	79.8	859.0	0	53	2-4-9	1	50.0	538.2	4	31
2-1-1	2	68.3	735.2	1	43	2-5-1 P	1	50.4	542.5	5	33
2-1-2	1	52.7	567.3	1	36	2-5-2 P	2	72.5	780.4	5	45
2-1-3	1	50.0	538.2	1	31	2-5-3 P	2	66.7	718.0	5	41
2-1-4	1	50.0	538.2	1	32	2-5-4 P	1	54.2	583.4	5	37
2-1-5	2	64.6	695.3	1	40	2-5-5 P	2	74.1	797.6	5	47
2-1-6	2	74.1	797.6	1	48	2-5-6 P	2	64.6	695.3	5	39
2-1-7	2	74.1	797.6	1	47	2-5-7 P	1	50.0	538.2	5	31
2-1-8	2	64.6	695.0	1	39						

P Penthouse

ONE BEDROOM APARTMENT

FLOORS 01, 02, 03, 04 & 05

APARTMENTS 1-4-5, 2-1-3, 2-1-9*, 2-2-3, 2-2-9*, 2-3-3, 2-3-9*, 2-4-3, 2-4-9* & 2-5-7 P*



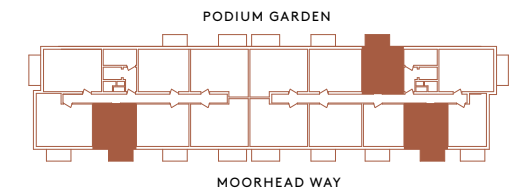
*Apartments 2-1-9, 2-2-9, 2-3-9, 2-4-9 & 2-5-7 are rotated and have a view of the Podium Gardens.

ROOM DIMENSIONS

LIVING/ DINING/ KITCHEN	7.23m x 3.59m	23' 9" x 11' 9"
BEDROOM	3.82m x 3.03m	12' 6" x 9' 11"
BALCONY	4.23m x 1.52m	13' 11" x 5' 0"
TOTAL INTERNAL AREA	50.0 sq m	538 sq ft
TOTAL EXTERNAL AREA	6.4 sq m	69 sq ft

LOCATION

FLOOR 01 SHOWN BELOW



- ◀▶ Measurements
- C Coat cupboard
- W Fitted wardrobe
- ☒ Kitchen Unit
- WM Space for Washing Machine
- U Utility Room
- HIU Heat Interface Unit
- R Radiator

DISCLAIMER

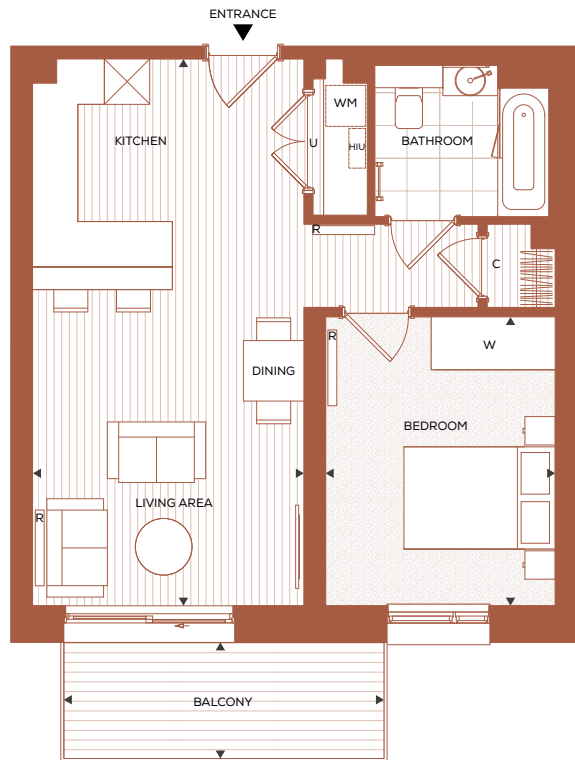
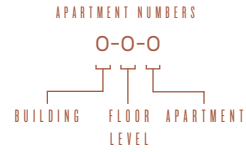
Apartment layouts show indicative furniture arrangements with approximate measurements and are indicative only. Dimensions, which are taken from the indicated points of measurements are for guidance only and are not intended to be used for carpet sizes, appliance space or items of furniture. Apartment areas are provided as gross internal areas in accordance RICS measuring practice. All measurements and areas may vary within a tolerance of 5%. Kitchen layouts are indicative only and are subject to change. Internal wardrobe layouts are indicative only and are subject to change. Services boxing sizes and locations may vary. Please note: to increase legibility these plans have been sized to fit the page and are not drawn to scale and as such may not be at the same scale as those on other pages.

THE BLACKHEATH COLLECTION

ONE BEDROOM APARTMENT

FLOORS 01, 02, 03 & 04

APARTMENTS 2-1-4, 2-2-4, 2-3-4 & 2-4-4



ROOM DIMENSIONS

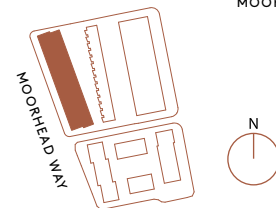
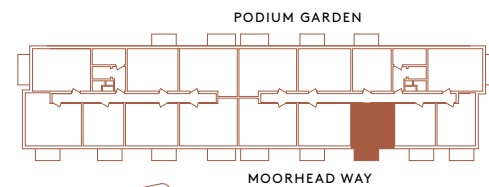
LIVING/ DINING/ KITCHEN	7.23m x 3.59m	23' 9" x 11' 9"
BEDROOM	3.82m x 3.03m	12' 6" x 9' 11"
BALCONY	4.23 m x 1.52m	13' 11" x 5' 0"
TOTAL INTERNAL AREA	50.0 sq m	538 sq ft
TOTAL EXTERNAL AREA	6.4 sq m	69 sq ft

- ◄► Measurements
- C Coat cupboard
- W Fitted wardrobe
- ☒ Kitchen Unit
- WM Space for Washing Machine
- U Utility Room
- HIU Heat Interface Unit
- R Radiator

DISCLAIMER
Apartment layouts show indicative furniture arrangements with approximate measurements and are indicative only. Dimensions, which are taken from the indicated points of measurements are for guidance only and are not intended to be used for carpet sizes, appliance space or items of furniture. Apartment areas are provided as gross internal areas in accordance RICS measuring practice. All measurements and areas may vary within a tolerance of 5%. Kitchen layouts are indicative only and are subject to change. Internal wardrobe layouts are indicative only and are subject to change. Services boxing sizes and locations may vary. Please note: to increase legibility these plans have been sized to fit the page and are not drawn to scale and as such may not be at the same scale as those on other pages.

LOCATION

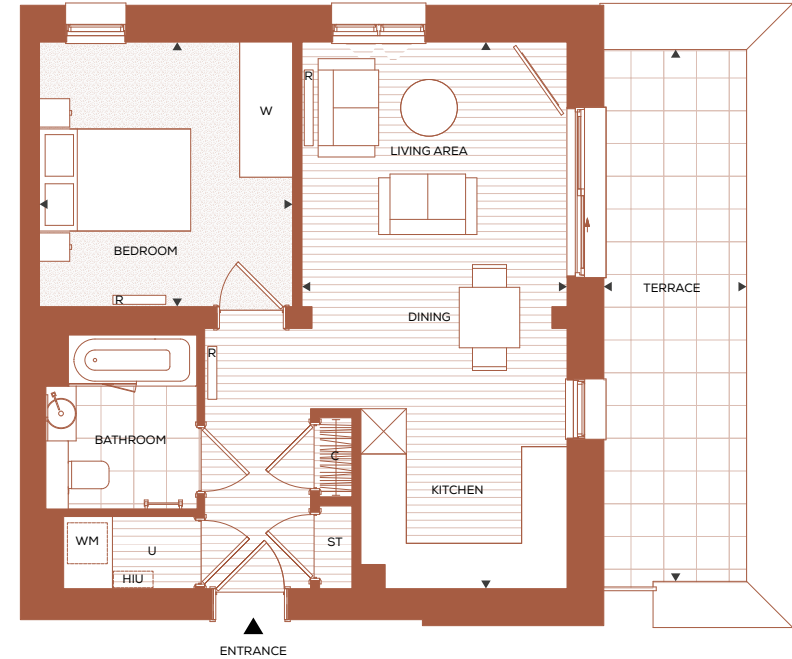
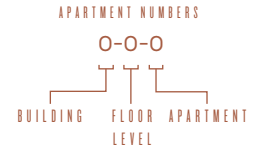
FLOOR 01 SHOWN BELOW



ONE BEDROOM APARTMENT

FLOOR 05

APARTMENT 2-5-1 P



ROOM DIMENSIONS

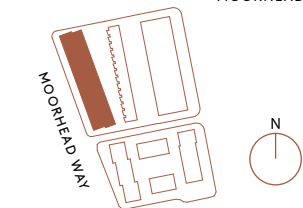
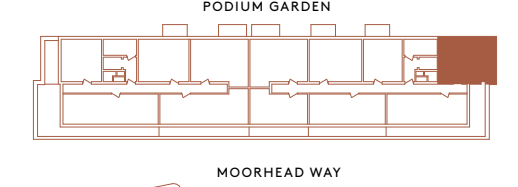
LIVING/ DINING/ KITCHEN	7.23m x 3.50m	23' 9" x 11' 6"
BEDROOM	3.50m x 3.34m	11' 6" x 10' 11"
TERRACE	7.03m x 1.89m	23' 1" x 6' 2"
TOTAL INTERNAL AREA	50.4 sq m	543 sq ft
TOTAL EXTERNAL AREA	13.2 sq m	142 sq ft

- ◄► Measurements
- C Coat cupboard
- W Fitted wardrobe
- ☒ Kitchen Unit
- WM Space for Washing Machine
- U Utility Room
- HIU Heat Interface Unit
- R Radiator

DISCLAIMER
Apartment layouts show indicative furniture arrangements with approximate measurements and are indicative only. Dimensions, which are taken from the indicated points of measurements are for guidance only and are not intended to be used for carpet sizes, appliance space or items of furniture. Apartment areas are provided as gross internal areas in accordance RICS measuring practice. All measurements and areas may vary within a tolerance of 5%. Kitchen layouts are indicative only and are subject to change. Internal wardrobe layouts are indicative only and are subject to change. Services boxing sizes and locations may vary. Please note: to increase legibility these plans have been sized to fit the page and are not drawn to scale and as such may not be at the same scale as those on other pages.

LOCATION

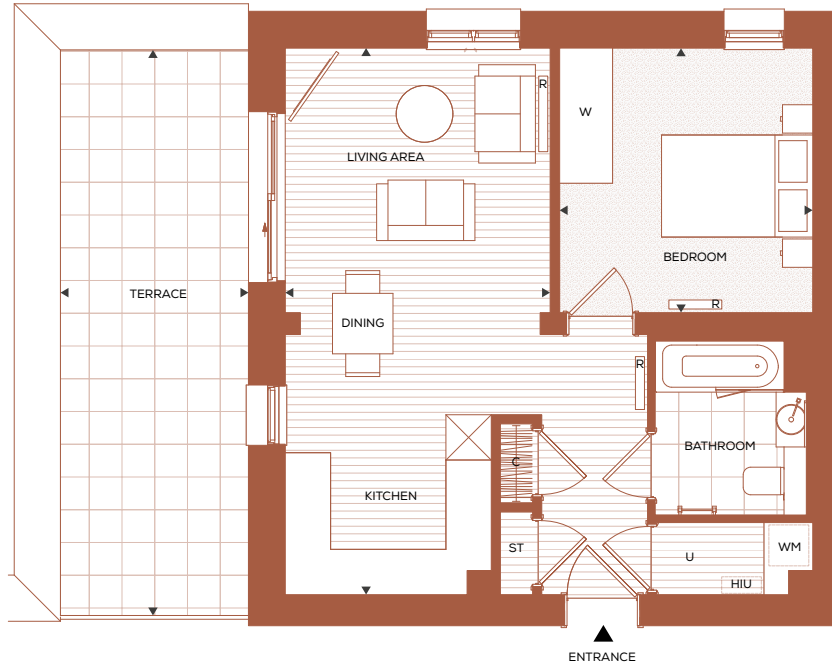
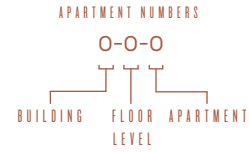
FLOOR 05 SHOWN BELOW



ONE BEDROOM APARTMENT

FLOOR 05

APARTMENT 1-5-5 P

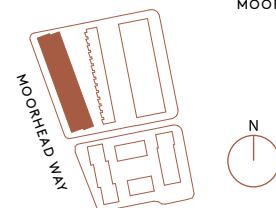
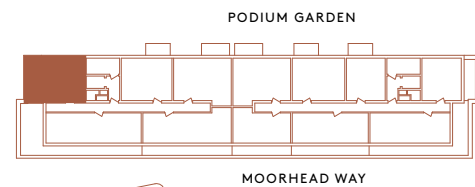


ROOM DIMENSIONS

LIVING/ DINING/ KITCHEN	7.23m x 3.50m	23' 9" x 11' 6"
BEDROOM	3.50m x 3.34m	11' 6" x 10' 11"
TERRACE	7.50m x 2.48m	24' 7" x 8' 2"
TOTAL INTERNAL AREA	50.4 sq m	543 sq ft
TOTAL EXTERNAL AREA	18.6 sq m	200 sq ft

LOCATION

FLOOR 05 SHOWN BELOW



- ◄► Measurements
- C Coat cupboard
- W Fitted wardrobe
- ☒ Kitchen Unit
- WM Space for Washing Machine
- U Utility Room
- HIU Heat Interface Unit
- R Radiator

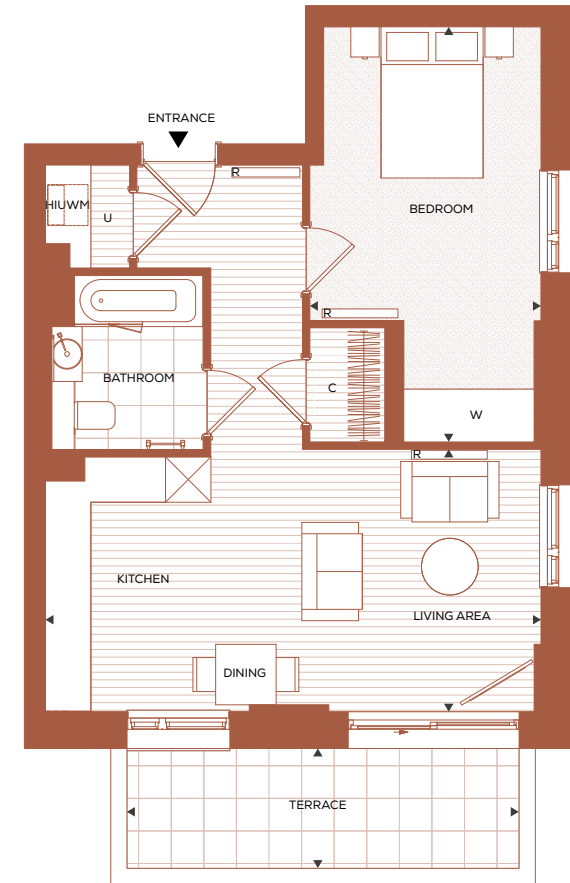
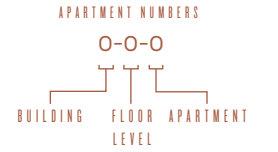
DISCLAIMER

Apartment layouts show indicative furniture arrangements with approximate measurements and are indicative only. Dimensions, which are taken from the indicated points of measurements are for guidance only and are not intended to be used for carpet sizes, appliance space or items of furniture. Apartment areas are provided as gross internal areas in accordance RICS measuring practice. All measurements and areas may vary within a tolerance of 5%. Kitchen layouts are indicative only and are subject to change. Internal wardrobe layouts are indicative only and are subject to change. Services boxing sizes and locations may vary. Please note: to increase legibility these plans have been sized to fit the page and are not drawn to scale and as such may not be at the same scale as those on other pages.

ONE BEDROOM APARTMENT

FLOOR 00

APARTMENT 2-0-2

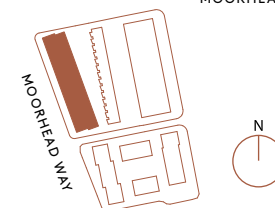
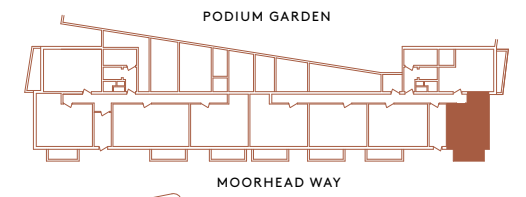


ROOM DIMENSIONS

LIVING/ DINING/ KITCHEN	6.55m x 3.47m	21' 6" x 11' 5"
BEDROOM	5.49m x 3.06m	18' 0" x 10' 0"
TERRACE	5.18m x 1.58m	17' 0" x 5' 2"
TOTAL INTERNAL AREA	52.7 sq m	567 sq ft
TOTAL EXTERNAL AREA	8.1 sq m	87 sq ft

LOCATION

FLOOR 00 SHOWN BELOW



- ◄► Measurements
- C Coat cupboard
- W Fitted wardrobe
- ☒ Kitchen Unit
- WM Space for Washing Machine
- U Utility Room
- HIU Heat Interface Unit
- R Radiator

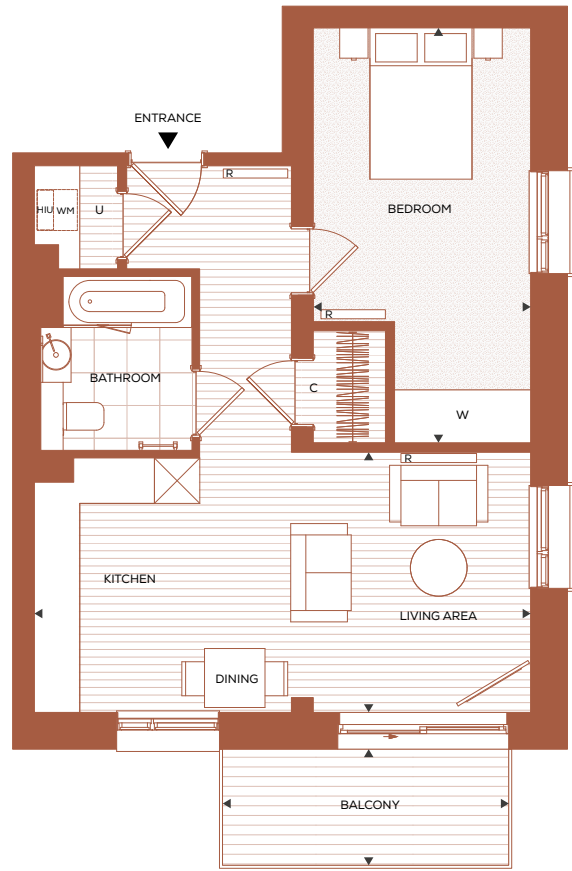
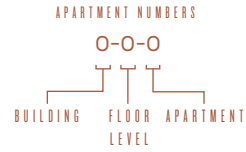
DISCLAIMER

Apartment layouts show indicative furniture arrangements with approximate measurements and are indicative only. Dimensions, which are taken from the indicated points of measurements are for guidance only and are not intended to be used for carpet sizes, appliance space or items of furniture. Apartment areas are provided as gross internal areas in accordance RICS measuring practice. All measurements and areas may vary within a tolerance of 5%. Kitchen layouts are indicative only and are subject to change. Internal wardrobe layouts are indicative only and are subject to change. Services boxing sizes and locations may vary. Please note: to increase legibility these plans have been sized to fit the page and are not drawn to scale and as such may not be at the same scale as those on other pages.

ONE BEDROOM APARTMENT

FLOORS 01, 02, 03 & 04

APARTMENTS 2-1-2, 2-2-2, 2-3-2 & 2-4-2

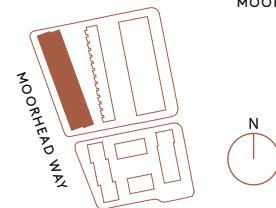
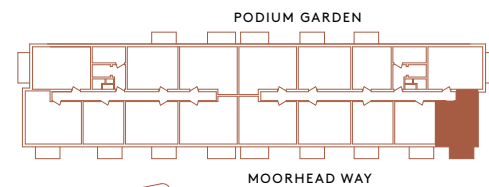


ROOM DIMENSIONS

LIVING/ DINING/ KITCHEN	6.56m x 3.44m	21' 6" x 11' 3"
BEDROOM	5.48m x 2.87m	18' 0" x 9' 5"
BALCONY	3.78 m x 1.52m	12' 5" x 5' 0"
TOTAL INTERNAL AREA	52.7 sq m	567 sq ft
TOTAL EXTERNAL AREA	5.7 sq m	61 sq ft

LOCATION

FLOOR 01 SHOWN BELOW



- ◄► Measurements
- C Coat cupboard
- W Fitted wardrobe
- ☒ Kitchen Unit
- WM Space for Washing Machine
- U Utility Room
- HIU Heat Interface Unit
- R Radiator

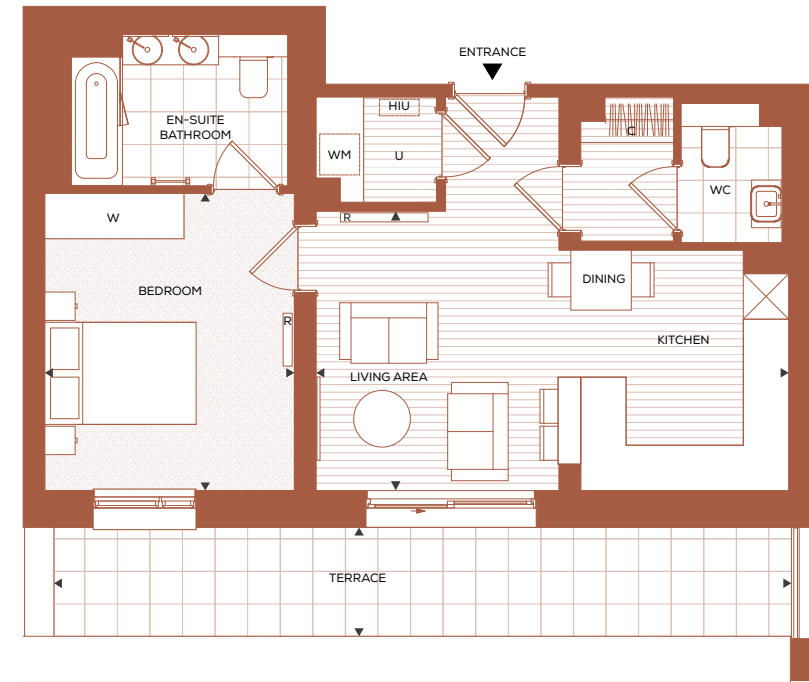
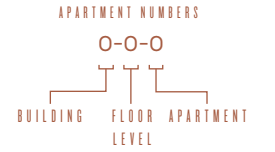
DISCLAIMER

Apartment layouts show indicative furniture arrangements with approximate measurements and are indicative only. Dimensions, which are taken from the indicated points of measurements are for guidance only and are not intended to be used for carpet sizes, appliance space or items of furniture. Apartment areas are provided as gross internal areas in accordance RICS measuring practice. All measurements and areas may vary within a tolerance of 5%. Kitchen layouts are indicative only and are subject to change. Internal wardrobe layouts are indicative only and are subject to change. Services boxing sizes and locations may vary. Please note: to increase legibility these plans have been sized to fit the page and are not drawn to scale and as such may not be at the same scale as those on other pages.

ONE BEDROOM APARTMENT

FLOOR 05

APARTMENT 2-5-4 P

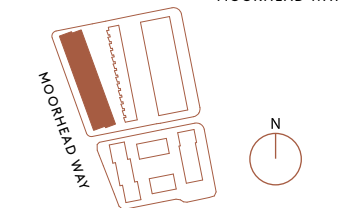
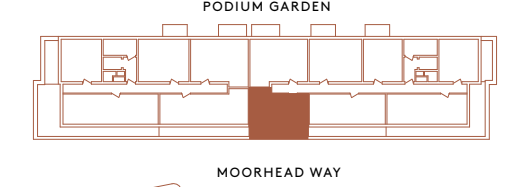


ROOM DIMENSIONS

LIVING/ DINING/ KITCHEN	6.25m x 3.69m	20' 6" x 12' 1"
BEDROOM	3.93m x 3.30m	12' 11" x 10' 10"
TERRACE	9.70m x 1.44m	31' 10" x 4' 9"
TOTAL INTERNAL AREA	54.2 sq m	583 sq ft
TOTAL EXTERNAL AREA	13.9 sq m	150 sq ft

LOCATION

FLOOR 05 SHOWN BELOW



- ◄► Measurements
- C Coat cupboard
- W Fitted wardrobe
- ☒ Kitchen Unit
- WM Space for Washing Machine
- U Utility Room
- HIU Heat Interface Unit
- R Radiator

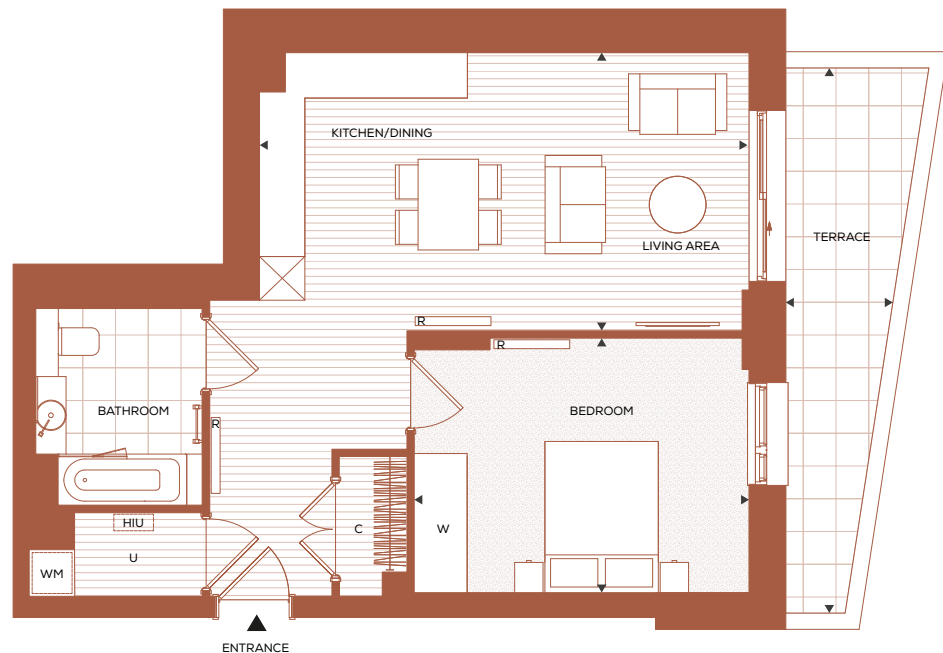
DISCLAIMER

Apartment layouts show indicative furniture arrangements with approximate measurements and are indicative only. Dimensions, which are taken from the indicated points of measurements are for guidance only and are not intended to be used for carpet sizes, appliance space or items of furniture. Apartment areas are provided as gross internal areas in accordance RICS measuring practice. All measurements and areas may vary within a tolerance of 5%. Kitchen layouts are indicative only and are subject to change. Internal wardrobe layouts are indicative only and are subject to change. Services boxing sizes and locations may vary. Please note: to increase legibility these plans have been sized to fit the page and are not drawn to scale and as such may not be at the same scale as those on other pages.

ONE BEDROOM APARTMENT

FLOOR 00

APARTMENT 2-0-1

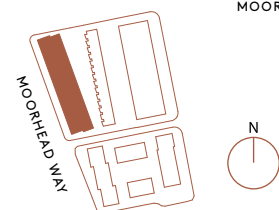
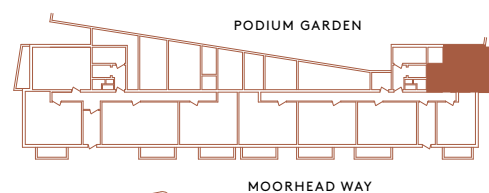


ROOM DIMENSIONS

LIVING/ DINING/ KITCHEN	6.47m x 3.68m	21' 3" x 12' 1"
BEDROOM	4.42m x 3.36m	14' 6" x 11' 0"
TERRACE	7.21m x 1.41m	23' 8" x 4' 8"
TOTAL INTERNAL AREA	58.1 sq m	625 sq ft
TOTAL EXTERNAL AREA	10.1 sq m	109 sq ft

LOCATION

FLOOR 00 SHOWN BELOW



- ◄► Measurements
- C Coat cupboard
- W Fitted wardrobe
- ☒ Kitchen Unit
- WM Space for Washing Machine
- U Utility Room
- HIU Heat Interface Unit
- R Radiator

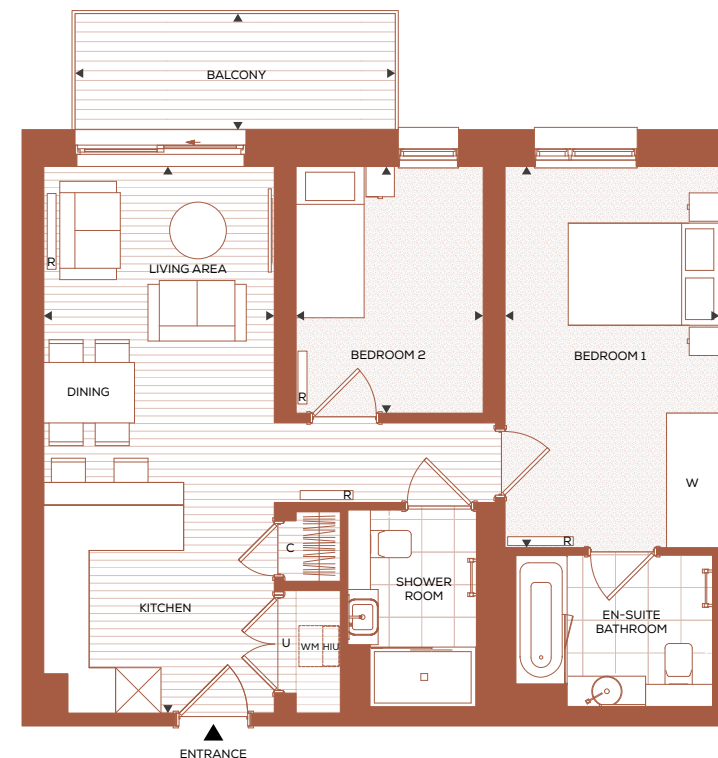
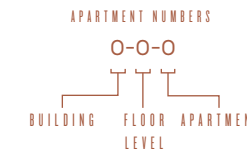
DISCLAIMER

Apartment layouts show indicative furniture arrangements with approximate measurements and are indicative only. Dimensions, which are taken from the indicated points of measurements are for guidance only and are not intended to be used for carpet sizes, appliance space or items of furniture. Apartment areas are provided as gross internal areas in accordance RICS measuring practice. All measurements and areas may vary within a tolerance of 5%. Kitchen layouts are indicative only and are subject to change. Internal wardrobe layouts are indicative only and are subject to change. Services boxing sizes and locations may vary. Please note: to increase legibility these plans have been sized to fit the page and are not drawn to scale and as such may not be at the same scale as those on other pages.

TWO BEDROOM APARTMENT

FLOORS 01, 02, 03, 04 & 05

APARTMENTS 1-4-4*, 2-1-8, 2-2-8, 2-3-8, 2-4-8 & 2-5-6 P



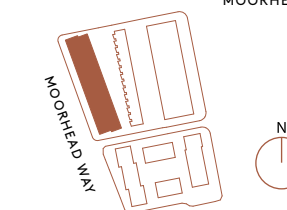
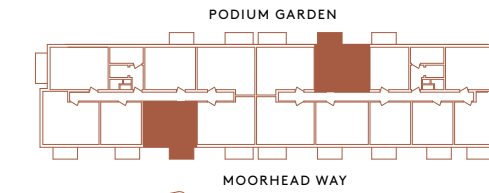
*Apartment 1-4-4 is rotated.

ROOM DIMENSIONS

LIVING/ DINING/ KITCHEN	7.23m x 3.04m	23' 9" x 10' 0"
BEDROOM 1	5.04m x 2.83m	16' 6" x 9' 3"
BEDROOM 2	3.26m x 2.47m	10' 8" x 8' 1"
BALCONY	4.23m x 1.53m	13' 11" x 5' 0"
TOTAL INTERNAL AREA	64.6 sq m	695 sq ft
TOTAL EXTERNAL AREA	6.4 sq m	69 sq ft

LOCATION

FLOOR 01 SHOWN BELOW



- ◄► Measurements
- C Coat cupboard
- W Fitted wardrobe
- ☒ Kitchen Unit
- WM Space for Washing Machine
- U Utility Room
- HIU Heat Interface Unit
- R Radiator

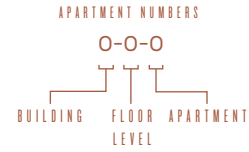
DISCLAIMER

Apartment layouts show indicative furniture arrangements with approximate measurements and are indicative only. Dimensions, which are taken from the indicated points of measurements are for guidance only and are not intended to be used for carpet sizes, appliance space or items of furniture. Apartment areas are provided as gross internal areas in accordance RICS measuring practice. All measurements and areas may vary within a tolerance of 5%. Kitchen layouts are indicative only and are subject to change. Internal wardrobe layouts are indicative only and are subject to change. Services boxing sizes and locations may vary. Please note: to increase legibility these plans have been sized to fit the page and are not drawn to scale and as such may not be at the same scale as those on other pages.

TWO BEDROOM APARTMENT

FLOORS 01, 02, 03, 04 & 05

APARTMENTS 1-4-1*, 1-5-1 P*, 2-1-5, 2-2-5, 2-3-5 & 2-4-5



*Apartments 1-4-1 & 1-5-1 are rotated and have a view of the Podium Gardens.

ROOM DIMENSIONS

LIVING/ DINING/ KITCHEN	7.23m x 3.04m	23' 9" x 10' 0"
BEDROOM 1	5.04m x 2.83m	16' 6" x 9' 3"
BEDROOM 2	3.26m x 2.47m	10' 8" x 8' 1"
BALCONY	4.23m x 1.53m	13' 11" x 5' 0"
TOTAL INTERNAL AREA	64.6 sq m	695 sq ft
TOTAL EXTERNAL AREA	6.4 sq m	69 sq ft

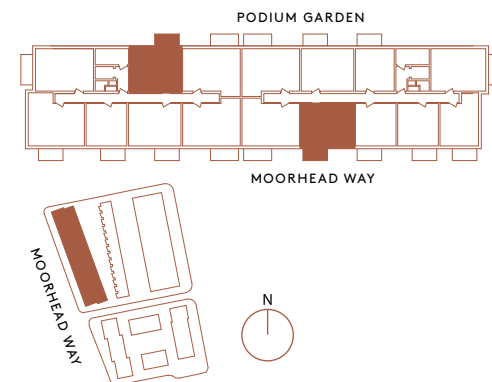
- ◄► Measurements
- C Coat cupboard
- W Fitted wardrobe
- ☒ Kitchen Unit
- WM Space for Washing Machine
- U Utility Room
- HIU Heat Interface Unit
- R Radiator

DISCLAIMER

Apartment layouts show indicative furniture arrangements with approximate measurements and are indicative only. Dimensions, which are taken from the indicated points of measurements are for guidance only and are not intended to be used for carpet sizes, appliance space or items of furniture. Apartment areas are provided as gross internal areas in accordance RICS measuring practice. All measurements and areas may vary within a tolerance of 5%. Kitchen layouts are indicative only and are subject to change. Internal wardrobe layouts are indicative only and are subject to change. Services boxing sizes and locations may vary. Please note: to increase legibility these plans have been sized to fit the page and are not drawn to scale and as such may not be at the same scale as those on other pages.

LOCATION

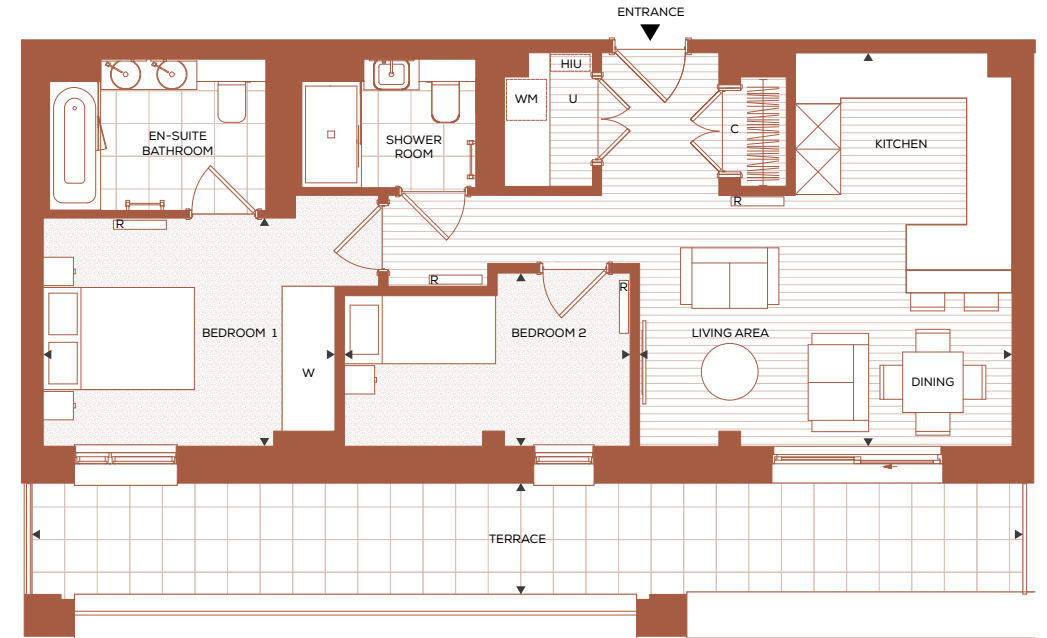
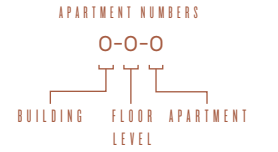
FLOOR 01 SHOWN BELOW



TWO BEDROOM APARTMENT

FLOOR 05

APARTMENT 2-5-3 P



ROOM DIMENSIONS

LIVING/ DINING/ KITCHEN	5.24m x 4.92m	17' 2" x 16' 2"
BEDROOM 1	3.85m x 3.02m	12' 8" x 9' 11"
BEDROOM 2	3.78m x 2.29m	12' 5" x 7' 6"
TERRACE	13.10m x 1.44m	43' 0" x 4' 9"
TOTAL INTERNAL AREA	66.7 sq m	718 sq ft
TOTAL EXTERNAL AREA	18.8 sq m	202 sq ft

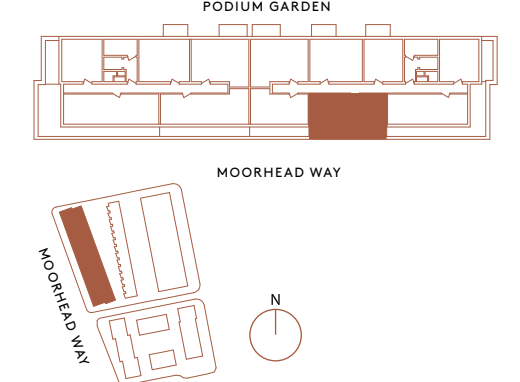
- ◄► Measurements
- C Coat cupboard
- W Fitted wardrobe
- ☒ Kitchen Unit
- WM Space for Washing Machine
- U Utility Room
- HIU Heat Interface Unit
- R Radiator

DISCLAIMER

Apartment layouts show indicative furniture arrangements with approximate measurements and are indicative only. Dimensions, which are taken from the indicated points of measurements are for guidance only and are not intended to be used for carpet sizes, appliance space or items of furniture. Apartment areas are provided as gross internal areas in accordance RICS measuring practice. All measurements and areas may vary within a tolerance of 5%. Kitchen layouts are indicative only and are subject to change. Internal wardrobe layouts are indicative only and are subject to change. Services boxing sizes and locations may vary. Please note: to increase legibility these plans have been sized to fit the page and are not drawn to scale and as such may not be at the same scale as those on other pages.

LOCATION

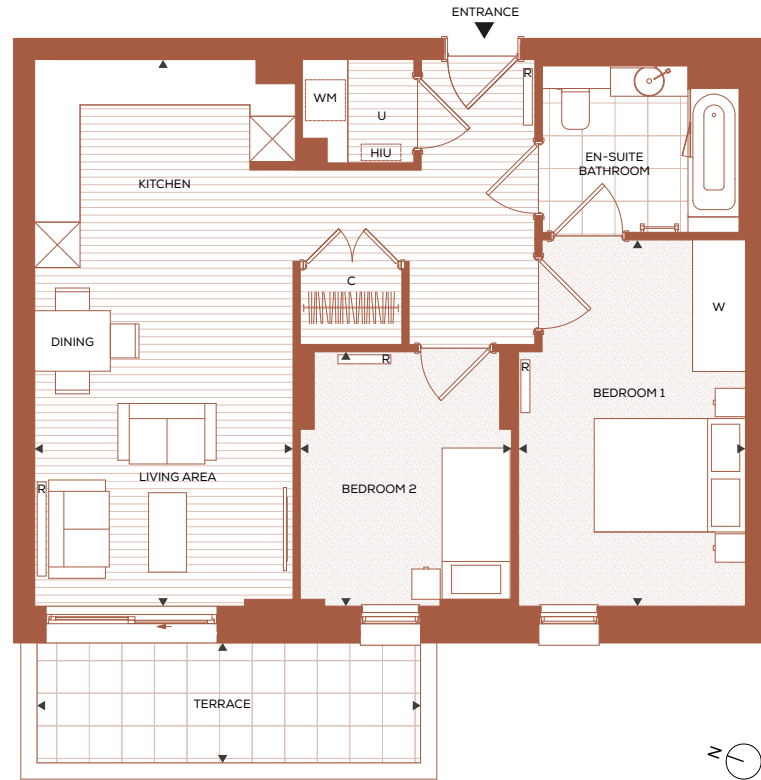
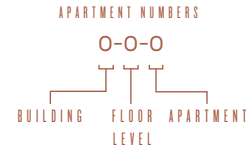
FLOOR 05 SHOWN BELOW



TWO BEDROOM APARTMENT

FLOOR 00

APARTMENT 2-0-4



ROOM DIMENSIONS

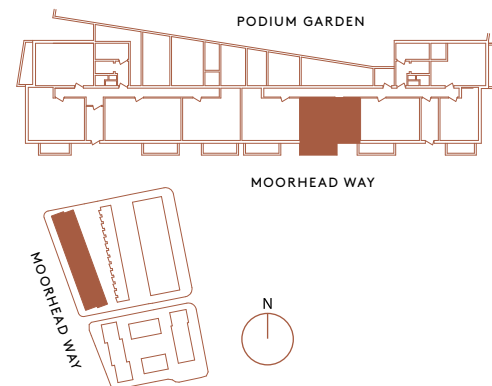
LIVING/ DINING/ KITCHEN	7.23m x 3.41m	23' 9" x 11' 2"
BEDROOM 1	4.84m x 3.00m	15' 11" x 9' 10"
BEDROOM 2	3.36m x 2.79m	11' 0" x 9' 2"
TERRACE	5.07m x 1.58m	16' 8" x 5' 2"
TOTAL INTERNAL AREA	68.0 sq m	731 sq ft
TOTAL EXTERNAL AREA	8.01 sq m	86 sq ft

- ◀▶ Measurements
- C Coat cupboard
- W Fitted wardrobe
- ☒ Kitchen Unit
- WM Space for Washing Machine
- U Utility Room
- HIU Heat Interface Unit
- R Radiator

DISCLAIMER
Apartment layouts show indicative furniture arrangements with approximate measurements and are indicative only. Dimensions, which are taken from the indicated points of measurements are for guidance only and are not intended to be used for carpet sizes, appliance space or items of furniture. Apartment areas are provided as gross internal areas in accordance RICS measuring practice. All measurements and areas may vary within a tolerance of 5%. Kitchen layouts are indicative only and are subject to change. Internal wardrobe layouts are indicative only and are subject to change. Services boxing sizes and locations may vary. Please note: to increase legibility these plans have been sized to fit the page and are not drawn to scale and as such may not be at the same scale as those on other pages.

LOCATION

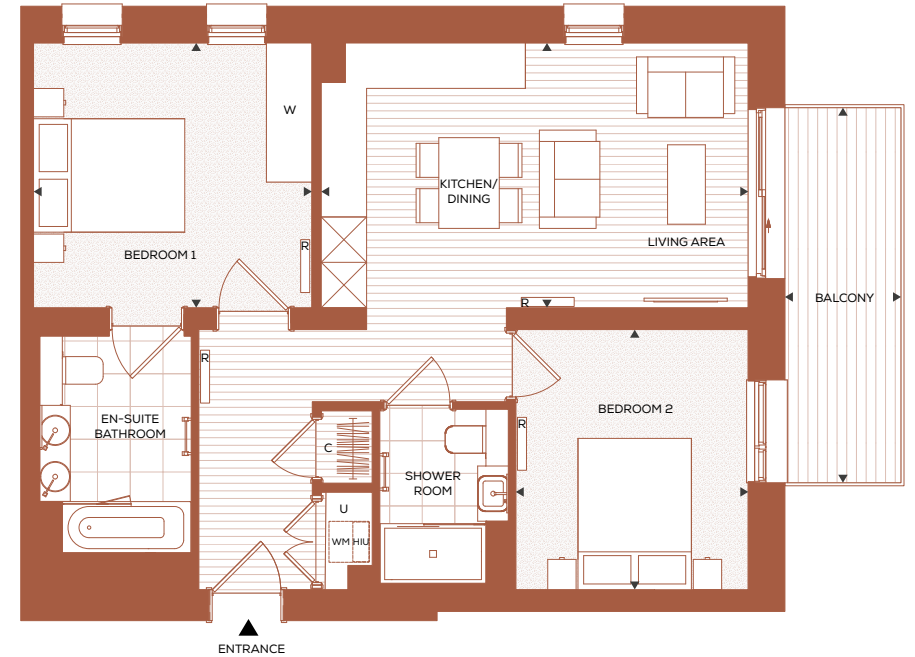
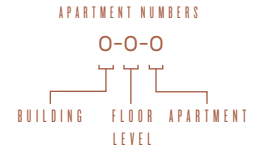
FLOOR 00 SHOWN BELOW



TWO BEDROOM APARTMENT

FLOORS 01, 02, 03 & 04

APARTMENTS 2-1-1, 2-2-1, 2-3-1 & 2-4-1



ROOM DIMENSIONS

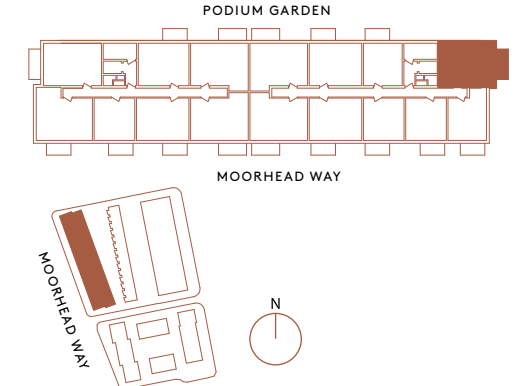
LIVING/ DINING/ KITCHEN	5.64m x 3.50m	18' 6" x 11' 6"
BEDROOM 1	3.68m x 3.50m	12' 1" x 11' 6"
BEDROOM 2	3.44m x 3.07m	11' 3" x 10' 1"
BALCONY	4.96m x 1.53m	16' 3" x 5' 0"
TOTAL INTERNAL AREA	68.3 sq m	735 sq ft
TOTAL EXTERNAL AREA	7.5 sq m	81 sq ft

- ◀▶ Measurements
- C Coat cupboard
- W Fitted wardrobe
- ☒ Kitchen Unit
- WM Space for Washing Machine
- U Utility Room
- HIU Heat Interface Unit
- R Radiator

DISCLAIMER
Apartment layouts show indicative furniture arrangements with approximate measurements and are indicative only. Dimensions, which are taken from the indicated points of measurements are for guidance only and are not intended to be used for carpet sizes, appliance space or items of furniture. Apartment areas are provided as gross internal areas in accordance RICS measuring practice. All measurements and areas may vary within a tolerance of 5%. Kitchen layouts are indicative only and are subject to change. Internal wardrobe layouts are indicative only and are subject to change. Services boxing sizes and locations may vary. Please note: to increase legibility these plans have been sized to fit the page and are not drawn to scale and as such may not be at the same scale as those on other pages.

LOCATION

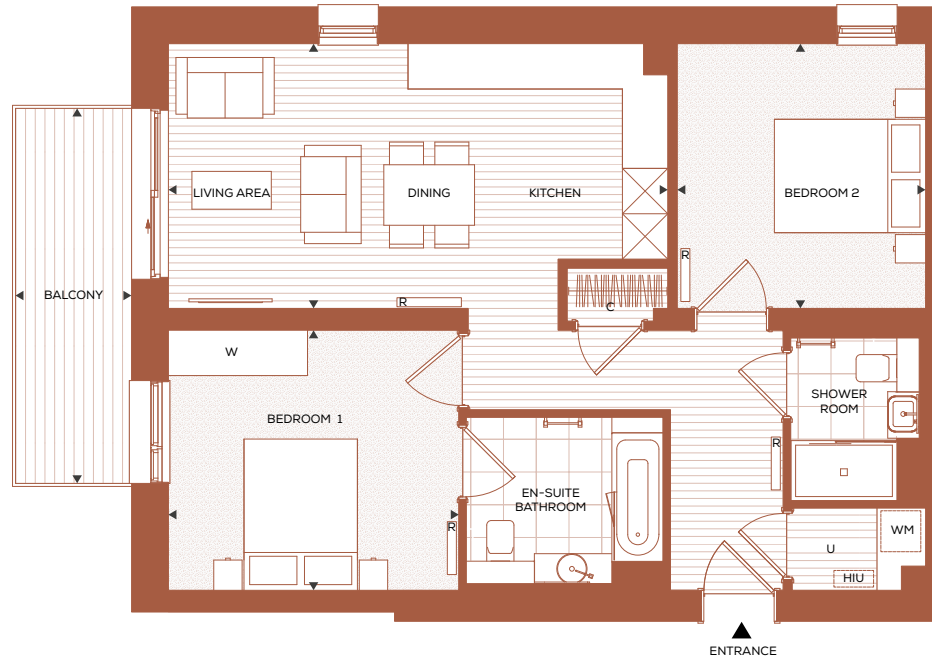
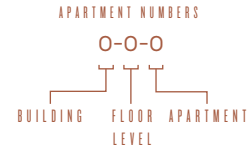
FLOOR 01 SHOWN BELOW



TWO BEDROOM APARTMENT

FLOOR 04

APARTMENT 1-4-7



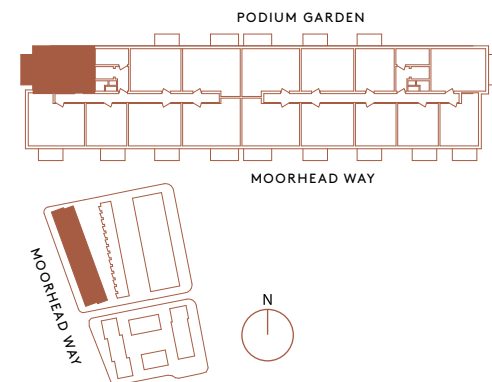
ROOM DIMENSIONS

LIVING/ DINING/ KITCHEN	6.60m x 3.50m	21' 8" x 11' 6"
BEDROOM 1	3.84m x 3.44m	12' 7" x 11' 3"
BEDROOM 2	3.50m x 3.28m	11' 6" x 10' 9"
BALCONY	4.96m x 1.53m	16' 3" x 5' 0"
TOTAL INTERNAL AREA	72.4 sq m	779 sq ft
TOTAL EXTERNAL AREA	7.6 sq m	82 sq ft

- ◄► Measurements
- C Coat cupboard
- W Fitted wardrobe
- ☒ Kitchen Unit
- WM Space for Washing Machine
- U Utility Room
- HIU Heat Interface Unit
- R Radiator

LOCATION

FLOOR 04 SHOWN BELOW

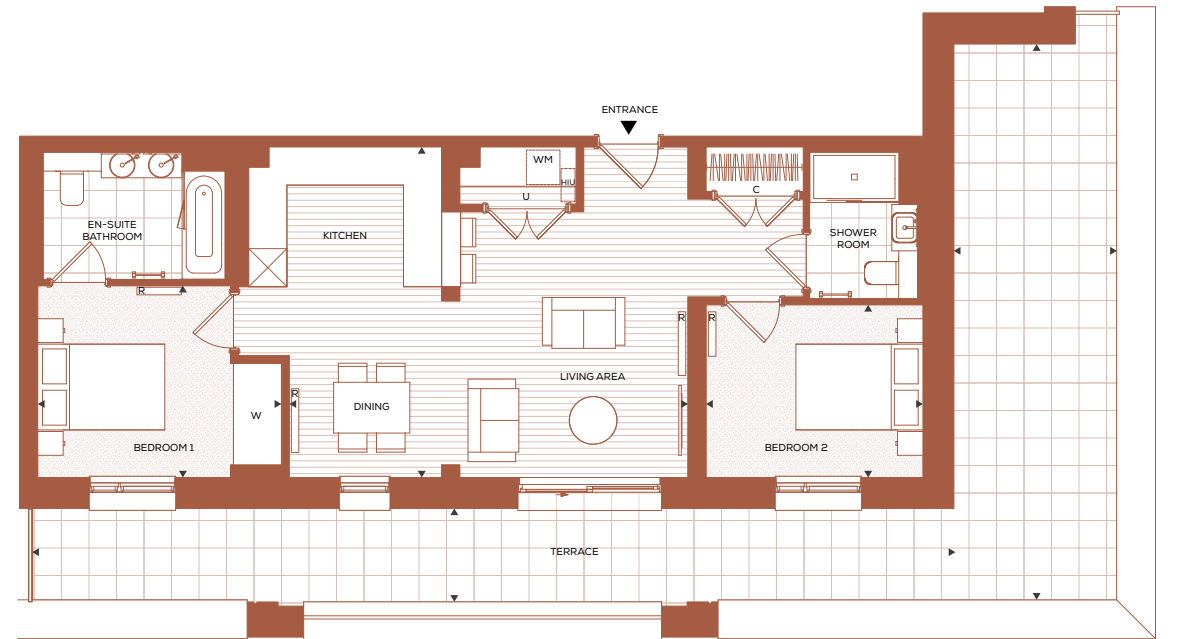
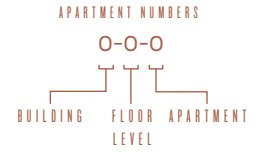


DISCLAIMER
Apartment layouts show indicative furniture arrangements with approximate measurements and are indicative only. Dimensions, which are taken from the indicated points of measurements are for guidance only and are not intended to be used for carpet sizes, appliance space or items of furniture. Apartment areas are provided as gross internal areas in accordance RICS measuring practice. All measurements and areas may vary within a tolerance of 5%. Kitchen layouts are indicative only and are subject to change. Internal wardrobe layouts are indicative only and are subject to change. Services boxing sizes and locations may vary. Please note: to increase legibility these plans have been sized to fit the page and are not drawn to scale and as such may not be at the same scale as those on other pages.

TWO BEDROOM APARTMENT

FLOOR 05

APARTMENT 2-5-2 P



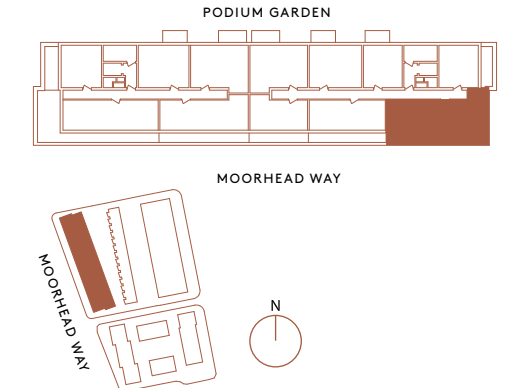
ROOM DIMENSIONS

LIVING/ DINING/ KITCHEN	6.90m x 5.20m	22' 8" x 17' 1"
BEDROOM 1	3.83m x 3.02m	12' 7" x 9' 11"
BEDROOM 2	3.41m x 2.72m	11' 2" x 8' 11"
TERRACE	14.54m x 1.44m	47' 8" x 4' 9"
TERRACE	8.81m x 2.56m	28' 11" x 8' 5"
TOTAL INTERNAL AREA	72.5 sq m	781 sq ft
TOTAL EXTERNAL AREA	43.3 sq m	466 sq ft

- ◄► Measurements
- C Coat cupboard
- W Fitted wardrobe
- ☒ Kitchen Unit
- WM Space for Washing Machine
- U Utility Room
- HIU Heat Interface Unit
- R Radiator

LOCATION

FLOOR 05 SHOWN BELOW

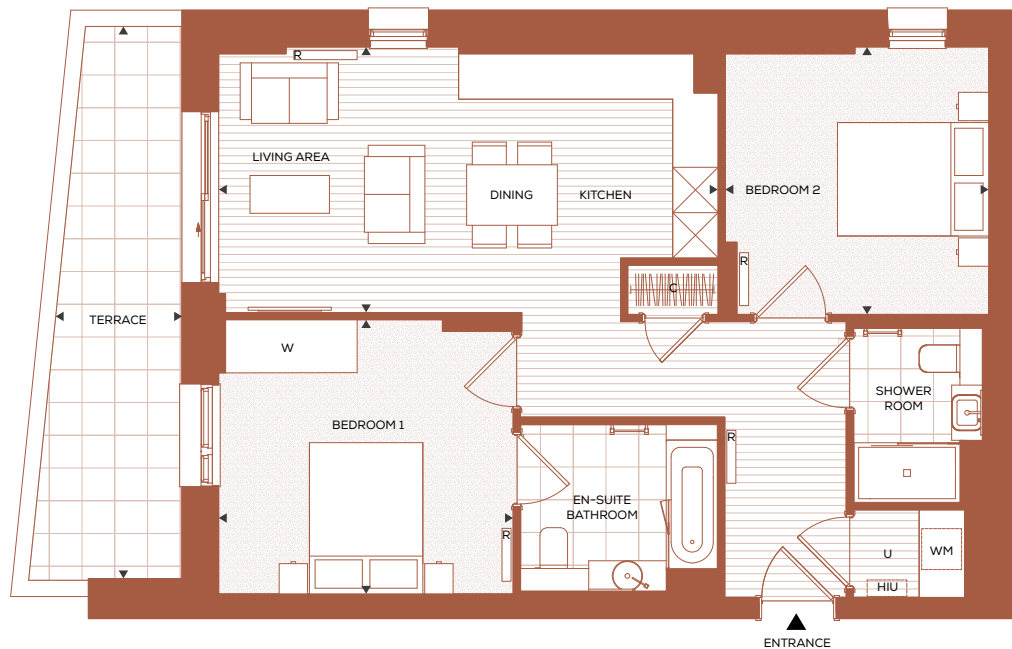


DISCLAIMER
Apartment layouts show indicative furniture arrangements with approximate measurements and are indicative only. Dimensions, which are taken from the indicated points of measurements are for guidance only and are not intended to be used for carpet sizes, appliance space or items of furniture. Apartment areas are provided as gross internal areas in accordance RICS measuring practice. All measurements and areas may vary within a tolerance of 5%. Kitchen layouts are indicative only and are subject to change. Internal wardrobe layouts are indicative only and are subject to change. Services boxing sizes and locations may vary. Please note: to increase legibility these plans have been sized to fit the page and are not drawn to scale and as such may not be at the same scale as those on other pages.

TWO BEDROOM APARTMENT

FLOOR 00

APARTMENT 1-0-4



ROOM DIMENSIONS

LIVING/ DINING/ KITCHEN	6.60m x 3.51 m	21' 8" x 11' 6"
BEDROOM 1	3.91m x 3.62 m	12' 10" x 11' 11"
BEDROOM 2	3.53m x 3.48 m	11' 7" x 11' 5"
TERRACE	7.32 m x 1.64 m	24' 0" x 5' 5"
TOTAL INTERNAL AREA	74.0 sq m	796 sq ft
TOTAL EXTERNAL AREA	12.0 sq m	129 sq ft

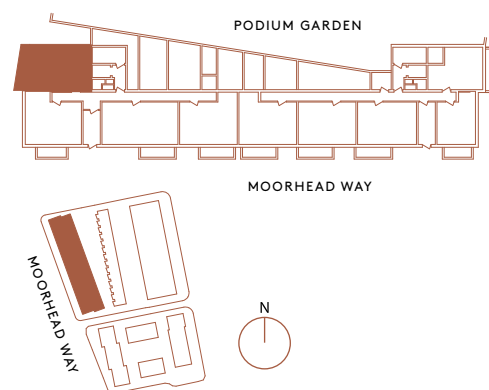
- ◄► Measurements
- C Coat cupboard
- W Fitted wardrobe
- ☒ Kitchen Unit
- WM Space for Washing Machine
- U Utility Room
- HIU Heat Interface Unit
- R Radiator

DISCLAIMER

Apartment layouts show indicative furniture arrangements with approximate measurements and are indicative only. Dimensions, which are taken from the indicated points of measurements are for guidance only and are not intended to be used for carpet sizes, appliance space or items of furniture. Apartment areas are provided as gross internal areas in accordance RICS measuring practice. All measurements and areas may vary within a tolerance of 5%. Kitchen layouts are indicative only and are subject to change. Internal wardrobe layouts are indicative only and are subject to change. Services boxing sizes and locations may vary. Please note: to increase legibility these plans have been sized to fit the page and are not drawn to scale and as such may not be at the same scale as those on other pages.

LOCATION

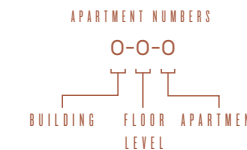
FLOOR 00 SHOWN BELOW



TWO BEDROOM APARTMENT

FLOORS 01, 02, 03, 04 & 05

APARTMENTS 1-1-3, 1-2-3, 1-3-3, 1-4-3, 2-1-7*, 2-2-7*, 2-3-7*, 2-4-7* & 2-5-5 P*



*Apartments 2-1-7, 2-2-7, 2-3-7, 2-4-7 & 2-5-5 are rotated and have a view of the Podium Gardens. Apartment 2-1-7 has a terrace in place of balcony.

ROOM DIMENSIONS

LIVING/ DINING/ KITCHEN	8.14m x 3.90m	26' 8" x 12' 10"
BEDROOM 1	4.74m x 2.75m	15' 7" x 9' 0"
BEDROOM 2	3.54m x 2.77m	11' 7" x 9' 1"
BALCONY	4.96m x 1.53m	16' 3" x 5' 0"
TOTAL INTERNAL AREA	74.1 sq m	798 sq ft
TOTAL EXTERNAL AREA	7.5 sq m	81 sq ft

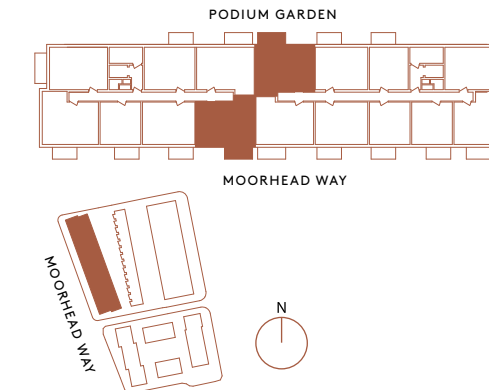
- ◄► Measurements
- C Coat cupboard
- W Fitted wardrobe
- ☒ Kitchen Unit
- WM Space for Washing Machine
- U Utility Room
- HIU Heat Interface Unit
- R Radiator

DISCLAIMER

Apartment layouts show indicative furniture arrangements with approximate measurements and are indicative only. Dimensions, which are taken from the indicated points of measurements are for guidance only and are not intended to be used for carpet sizes, appliance space or items of furniture. Apartment areas are provided as gross internal areas in accordance RICS measuring practice. All measurements and areas may vary within a tolerance of 5%. Kitchen layouts are indicative only and are subject to change. Internal wardrobe layouts are indicative only and are subject to change. Services boxing sizes and locations may vary. Please note: to increase legibility these plans have been sized to fit the page and are not drawn to scale and as such may not be at the same scale as those on other pages.

LOCATION

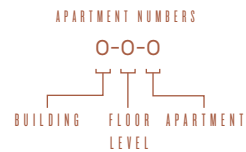
FLOOR 01 SHOWN BELOW



TWO BEDROOM APARTMENT

FLOORS 01, 02, 03, 04 & 05

APARTMENTS 1-1-2*, 1-2-2*, 1-3-2*, 1-4-2*, 1-5-2 P, 2-1-6, 2-2-6, 2-3-6 & 2-4-6



*Apartments 1-1-2, 1-2-2, 1-3-2, 1-4-2 & 1-5-2 are rotated and have a view of the Podium Gardens.

ROOM DIMENSIONS

LIVING/ DINING/ KITCHEN	8.14m x 3.90m	26' 8" x 12' 10"
BEDROOM 1	4.74m x 2.75m	15' 7" x 9' 0"
BEDROOM 2	3.54m x 2.77m	11' 7" x 9' 1"
BALCONY	4.96m x 1.53m	16' 3" x 5' 0"
TOTAL INTERNAL AREA	74.1 sq m	798 sq ft
TOTAL EXTERNAL AREA	7.5 sq m	81 sq ft

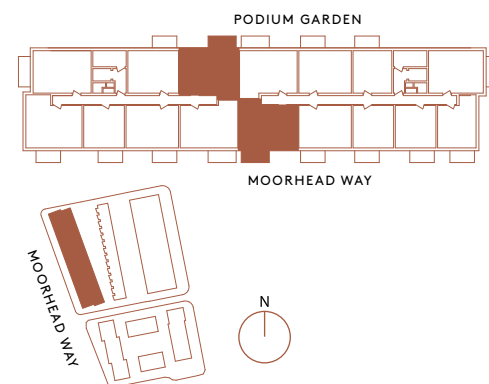
- ◄► Measurements
- C Coat cupboard
- W Fitted wardrobe
- ☒ Kitchen Unit
- WM Space for Washing Machine
- U Utility Room
- HIU Heat Interface Unit
- R Radiator

DISCLAIMER

Apartment layouts show indicative furniture arrangements with approximate measurements and are indicative only. Dimensions, which are taken from the indicated points of measurements are for guidance only and are not intended to be used for carpet sizes, appliance space or items of furniture. Apartment areas are provided as gross internal areas in accordance RICS measuring practice. All measurements and areas may vary within a tolerance of 5%. Kitchen layouts are indicative only and are subject to change. Internal wardrobe layouts are indicative only and are subject to change. Services boxing sizes and locations may vary. Please note: to increase legibility these plans have been sized to fit the page and are not drawn to scale and as such may not be at the same scale as those on other pages.

LOCATION

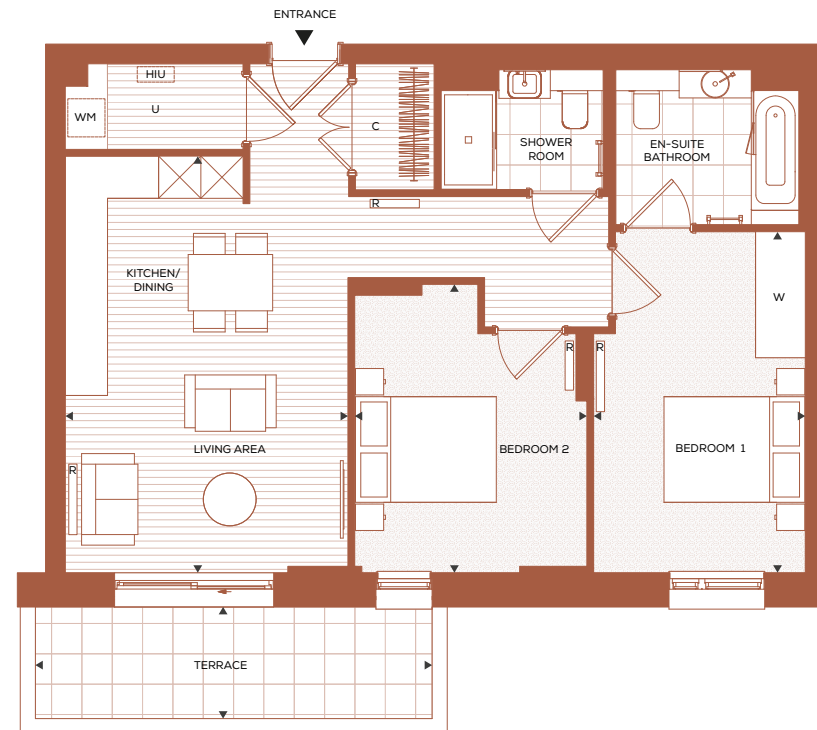
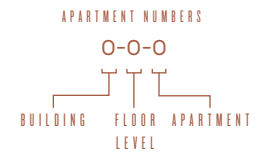
FLOOR 01 SHOWN BELOW



TWO BEDROOM APARTMENT

FLOOR 00

APARTMENT 2-0-3



ROOM DIMENSIONS

LIVING/ DINING/ KITCHEN	5.91m x 4.01m	19' 5" x 13' 2"
BEDROOM 1	4.84m x 3.00m	15' 11" x 9' 10"
BEDROOM 2	4.09m x 3.30m	13' 5" x 10' 10"
TERRACE	5.63m x 1.58m	18' 6" x 5' 2"
TOTAL INTERNAL AREA	76.0 sq m	818 sq ft
TOTAL EXTERNAL AREA	8.9 sq m	97 sq ft

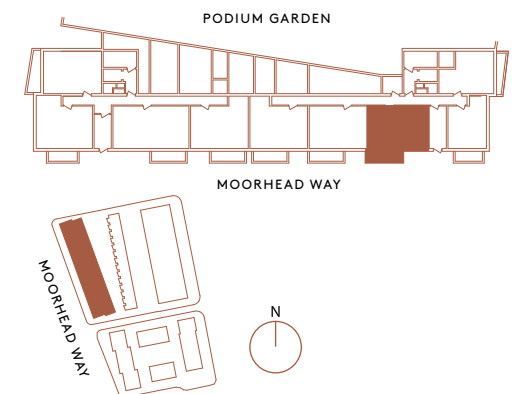
- ◄► Measurements
- C Coat cupboard
- W Fitted wardrobe
- ☒ Kitchen Unit
- WM Space for Washing Machine
- U Utility Room
- HIU Heat Interface Unit
- R Radiator

DISCLAIMER

Apartment layouts show indicative furniture arrangements with approximate measurements and are indicative only. Dimensions, which are taken from the indicated points of measurements are for guidance only and are not intended to be used for carpet sizes, appliance space or items of furniture. Apartment areas are provided as gross internal areas in accordance RICS measuring practice. All measurements and areas may vary within a tolerance of 5%. Kitchen layouts are indicative only and are subject to change. Internal wardrobe layouts are indicative only and are subject to change. Services boxing sizes and locations may vary. Please note: to increase legibility these plans have been sized to fit the page and are not drawn to scale and as such may not be at the same scale as those on other pages.

LOCATION

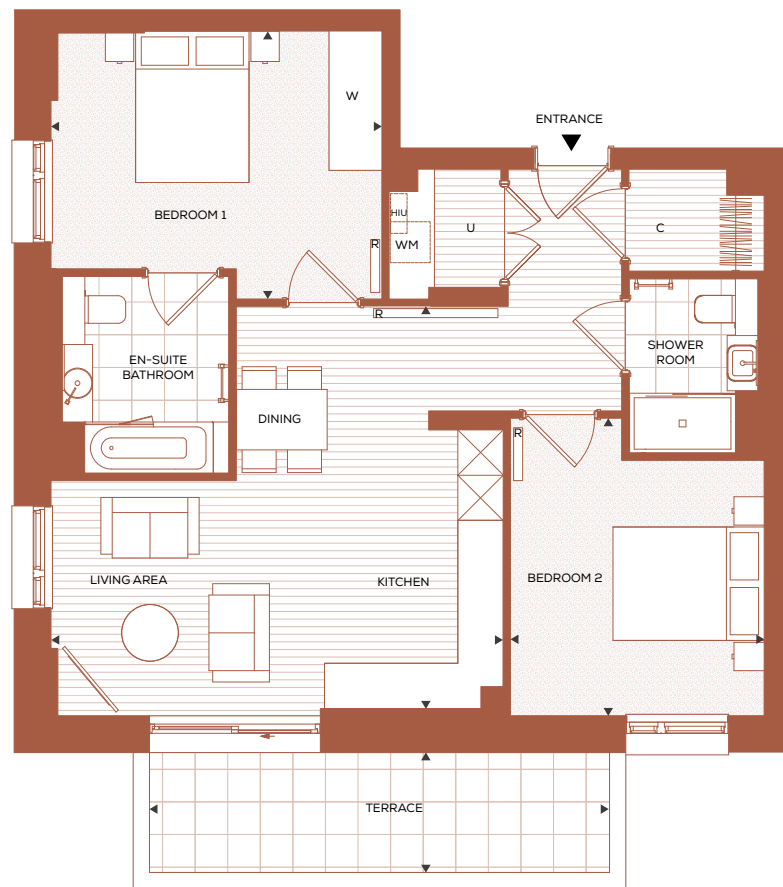
FLOOR 00 SHOWN BELOW



TWO BEDROOM APARTMENT

FLOOR 00

APARTMENT 1-0-3



ROOM DIMENSIONS

LIVING/ DINING/ KITCHEN	5.98m x 5.32m	19' 7" x 17' 5"
BEDROOM 1	4.37m x 3.54m	14' 4" x 11' 7"
BEDROOM 2	3.93m x 3.35m	12' 11" x 11' 0"
TERRACE	6.08m x 1.57m	19' 11" x 5' 2"
TOTAL INTERNAL AREA	76.2 sq m	820 sq ft
TOTAL EXTERNAL AREA	9.54 sq m	103 sq ft

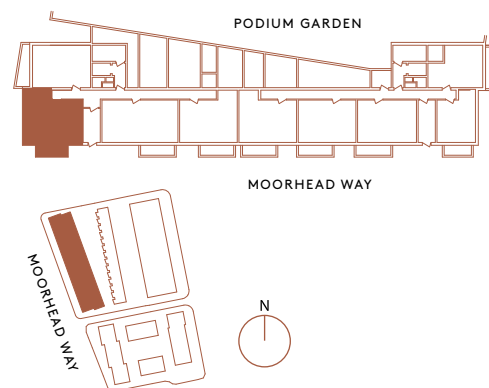
- ◄► Measurements
- C Coat cupboard
- W Fitted wardrobe
- ☒ Kitchen Unit
- WM Space for Washing Machine
- U Utility Room
- HIU Heat Interface Unit
- R Radiator

DISCLAIMER

Apartment layouts show indicative furniture arrangements with approximate measurements and are indicative only. Dimensions, which are taken from the indicated points of measurements are for guidance only and are not intended to be used for carpet sizes, appliance space or items of furniture. Apartment areas are provided as gross internal areas in accordance RICS measuring practice. All measurements and areas may vary within a tolerance of 5%. Kitchen layouts are indicative only and are subject to change. Internal wardrobe layouts are indicative only and are subject to change. Services boxing sizes and locations may vary. Please note: to increase legibility these plans have been sized to fit the page and are not drawn to scale and as such may not be at the same scale as those on other pages.

LOCATION

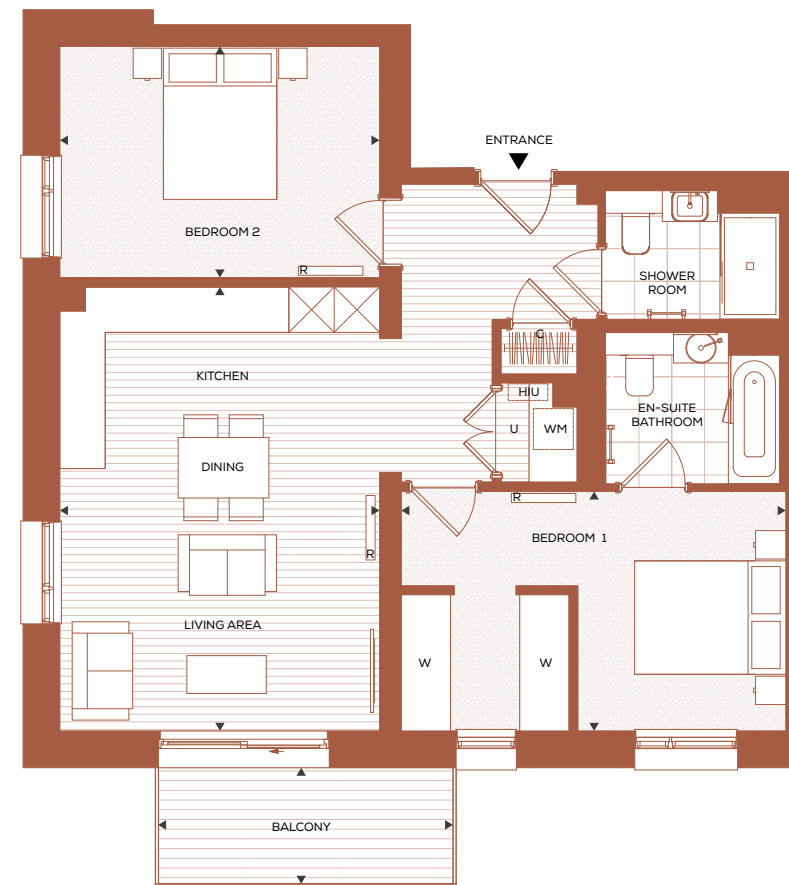
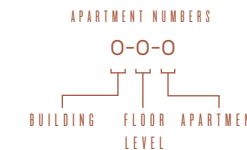
FLOOR 00 SHOWN BELOW



TWO BEDROOM APARTMENT

FLOORS 03 & 04

APARTMENTS 1-3-6 & 1-4-6



ROOM DIMENSIONS

LIVING/ DINING/ KITCHEN	5.87m x 4.23m	19' 3" x 13' 11"
BEDROOM 1	5.08m x 3.16m	16' 8" x 10' 4"
BEDROOM 2	4.23m x 3.06m	13' 11" x 10' 0"
BALCONY	3.89m x 1.53m	12' 9" x 5' 0"
TOTAL INTERNAL AREA	77.1 sq m	830 sq ft
TOTAL EXTERNAL AREA	5.9 sq m	64 sq ft

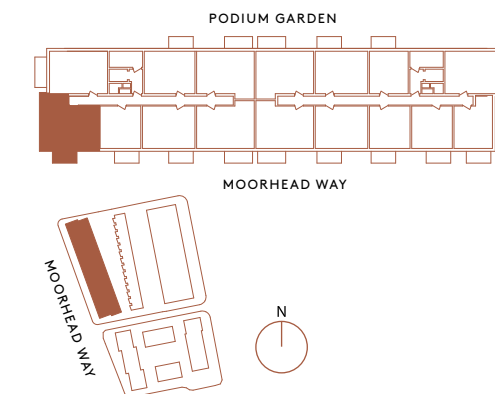
- ◄► Measurements
- C Coat cupboard
- W Fitted wardrobe
- ☒ Kitchen Unit
- WM Space for Washing Machine
- U Utility Room
- HIU Heat Interface Unit
- R Radiator

DISCLAIMER

Apartment layouts show indicative furniture arrangements with approximate measurements and are indicative only. Dimensions, which are taken from the indicated points of measurements are for guidance only and are not intended to be used for carpet sizes, appliance space or items of furniture. Apartment areas are provided as gross internal areas in accordance RICS measuring practice. All measurements and areas may vary within a tolerance of 5%. Kitchen layouts are indicative only and are subject to change. Internal wardrobe layouts are indicative only and are subject to change. Services boxing sizes and locations may vary. Please note: to increase legibility these plans have been sized to fit the page and are not drawn to scale and as such may not be at the same scale as those on other pages.

LOCATION

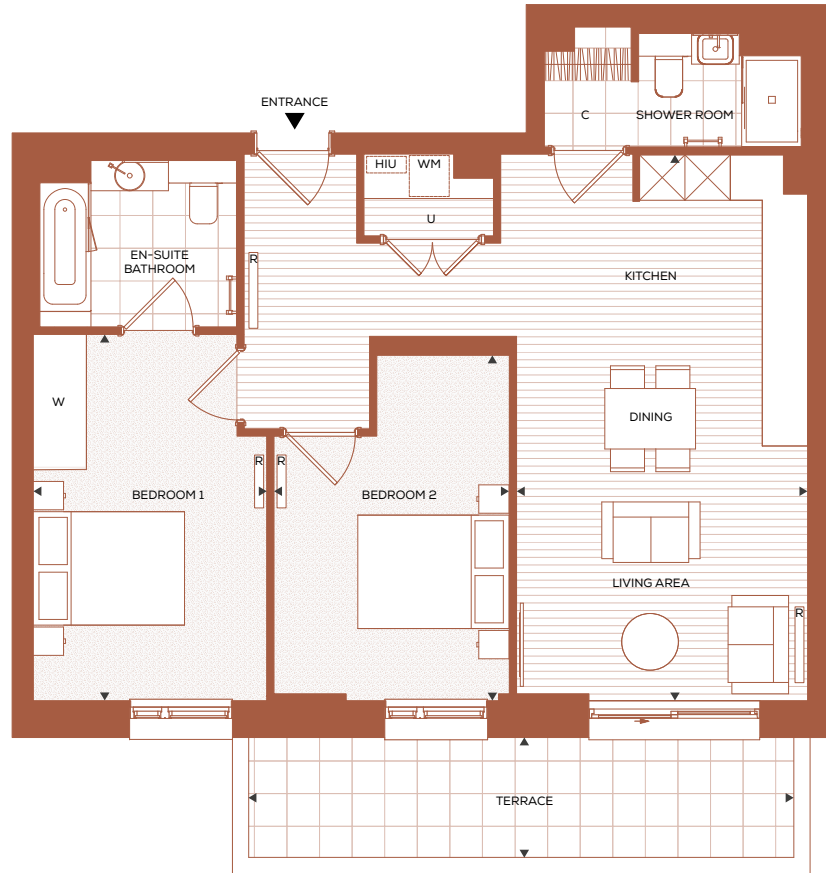
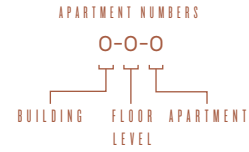
FLOOR 03 SHOWN BELOW



TWO BEDROOM APARTMENT

FLOOR 00

APARTMENT 1-0-1



ROOM DIMENSIONS

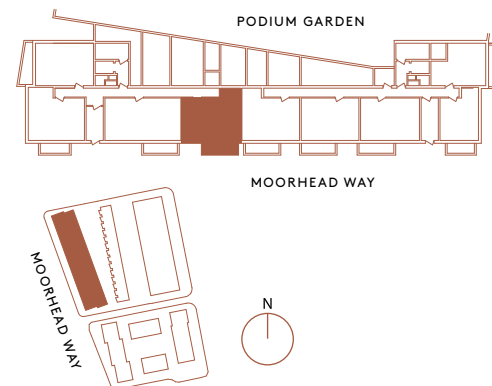
LIVING/ DINING/ KITCHEN	7.22m x 3.85m	23' 8" x 12' 8"
BEDROOM 1	4.84m x 3.08m	15' 11" x 10' 1"
BEDROOM 2	4.56m x 3.11m	15' 0" x 10' 2"
TERRACE	7.21m x 1.58m	23' 8" x 5' 2"
TOTAL INTERNAL AREA	79.8 sq m	859 sq ft
TOTAL EXTERNAL AREA	11.4 sq m	123 sq ft

- ◄► Measurements
- C Coat cupboard
- W Fitted wardrobe
- ☒ Kitchen Unit
- WM Space for Washing Machine
- U Utility Room
- HIU Heat Interface Unit
- R Radiator

DISCLAIMER
Apartment layouts show indicative furniture arrangements with approximate measurements and are indicative only. Dimensions, which are taken from the indicated points of measurements are for guidance only and are not intended to be used for carpet sizes, appliance space or items of furniture. Apartment areas are provided as gross internal areas in accordance RICS measuring practice. All measurements and areas may vary within a tolerance of 5%. Kitchen layouts are indicative only and are subject to change. Internal wardrobe layouts are indicative only and are subject to change. Services boxing sizes and locations may vary. Please note: to increase legibility these plans have been sized to fit the page and are not drawn to scale and as such may not be at the same scale as those on other pages.

LOCATION

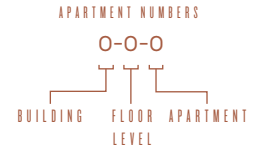
FLOOR 00 SHOWN BELOW



TWO BEDROOM APARTMENT

FLOOR 00

APARTMENT 2-0-5



ROOM DIMENSIONS

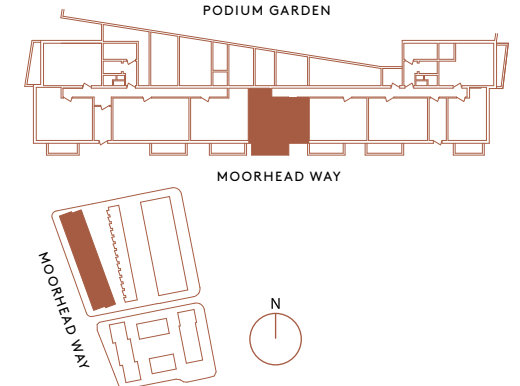
LIVING/ DINING/ KITCHEN	7.22m x 3.85m	23' 8" x 12' 8"
BEDROOM 1	4.84m x 3.08m	15' 11" x 10' 1"
BEDROOM 2	4.56m x 3.11m	15' 0" x 10' 2"
TERRACE	7.21m x 1.58m	23' 8" x 5' 2"
TOTAL INTERNAL AREA	79.8 sq m	859 sq ft
TOTAL EXTERNAL AREA	11.4 sq m	123 sq ft

- ◄► Measurements
- C Coat cupboard
- W Fitted wardrobe
- ☒ Kitchen Unit
- WM Space for Washing Machine
- U Utility Room
- HIU Heat Interface Unit
- R Radiator

DISCLAIMER
Apartment layouts show indicative furniture arrangements with approximate measurements and are indicative only. Dimensions, which are taken from the indicated points of measurements are for guidance only and are not intended to be used for carpet sizes, appliance space or items of furniture. Apartment areas are provided as gross internal areas in accordance RICS measuring practice. All measurements and areas may vary within a tolerance of 5%. Kitchen layouts are indicative only and are subject to change. Internal wardrobe layouts are indicative only and are subject to change. Services boxing sizes and locations may vary. Please note: to increase legibility these plans have been sized to fit the page and are not drawn to scale and as such may not be at the same scale as those on other pages.

LOCATION

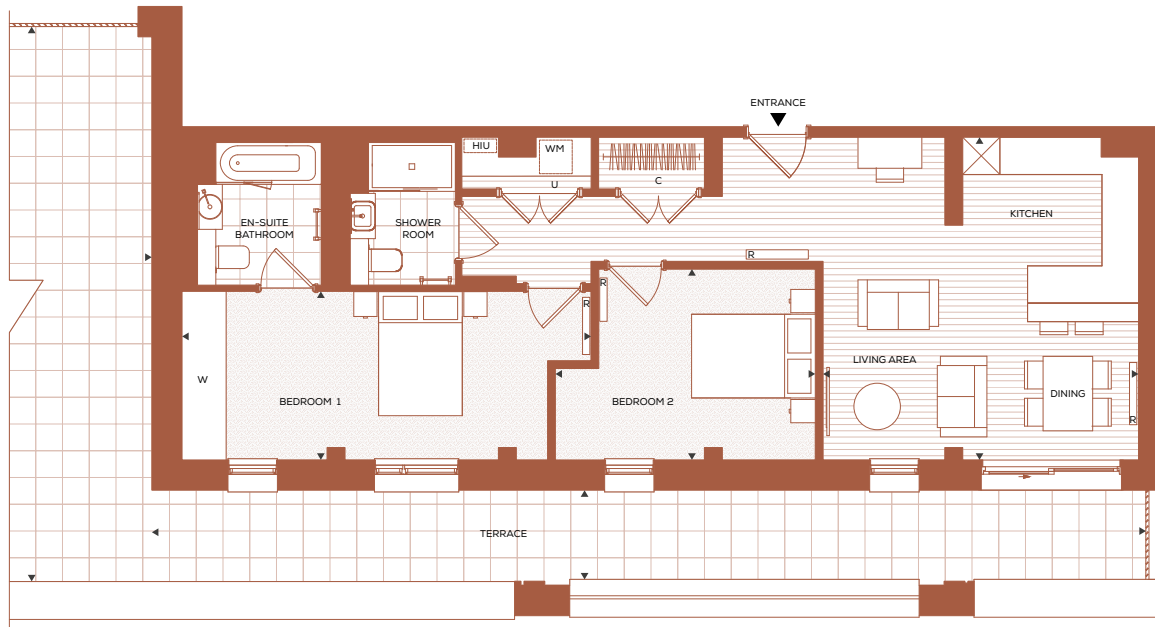
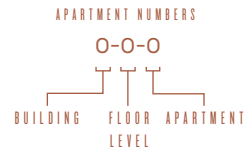
FLOOR 00 SHOWN BELOW



TWO BEDROOM APARTMENT

FLOOR 05

APARTMENT 1-5-4 P



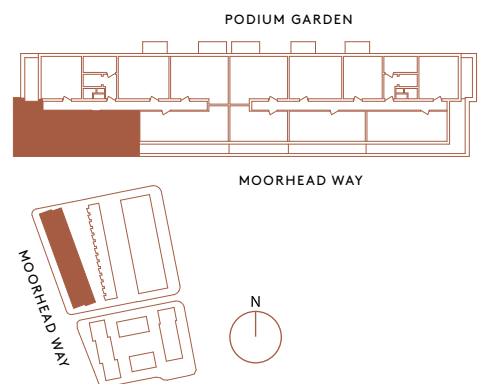
ROOM DIMENSIONS

LIVING/ DINING/ KITCHEN	5.08m x 5.20m	16' 8" x 17' 1"
BEDROOM 1	6.59m x 2.71m	21' 7" x 8' 11"
BEDROOM 2	4.19m x 3.07m	13' 9" x 10' 1"
TERRACE	16.03m x 1.44m	52' 7" x 4' 9"
TERRACE	8.96m x 3.95m	29' 5" x 13' 0"
TOTAL INTERNAL AREA	80.3 sq m	864 sq ft
TOTAL EXTERNAL AREA	58.4 sq m	629 sq ft

- ◄► Measurements
- C Coat cupboard
- W Fitted wardrobe
- ☒ Kitchen Unit
- WM Space for Washing Machine
- U Utility Room
- HIU Heat Interface Unit
- R Radiator

LOCATION

FLOOR 05 SHOWN BELOW



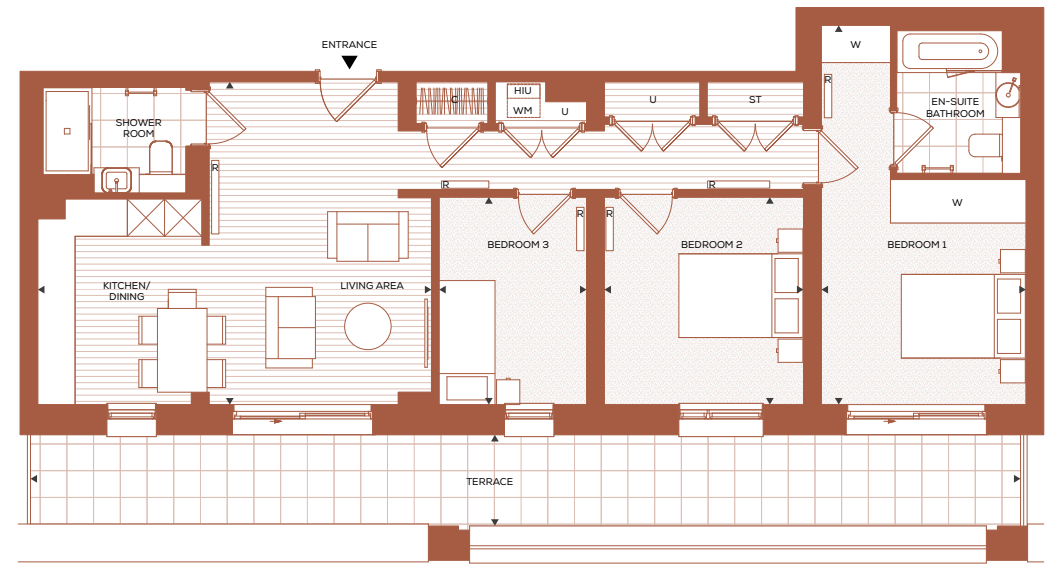
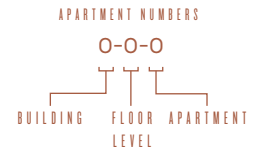
DISCLAIMER

Apartment layouts show indicative furniture arrangements with approximate measurements and are indicative only. Dimensions, which are taken from the indicated points of measurements are for guidance only and are not intended to be used for carpet sizes, appliance space or items of furniture. Apartment areas are provided as gross internal areas in accordance RICS measuring practice. All measurements and areas may vary within a tolerance of 5%. Kitchen layouts are indicative only and are subject to change. Internal wardrobe layouts are indicative only and are subject to change. Services boxing sizes and locations may vary. Please note: to increase legibility these plans have been sized to fit the page and are not drawn to scale and as such may not be at the same scale as those on other pages.

THREE BEDROOM APARTMENT

FLOOR 05

APARTMENT 1-5-3 P



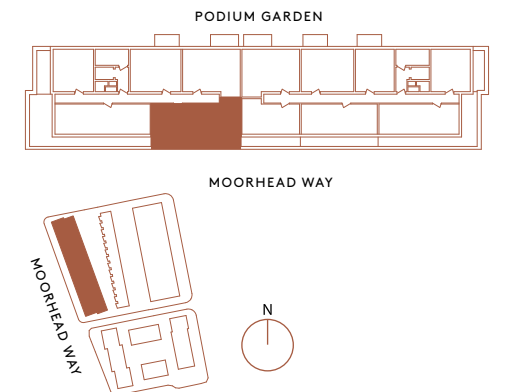
ROOM DIMENSIONS

LIVING/ DINING/ KITCHEN	6.34m x 5.20m	20' 10" x 17' 1"
BEDROOM 1	6.11m x 3.28m	20' 1" x 10' 9"
BEDROOM 2	3.34m x 3.21m	10' 11" x 10' 6"
BEDROOM 3	3.34m x 2.37m	10' 11" x 7' 9"
TERRACE	15.97m x 1.44m	52' 5" x 4' 9"
TOTAL INTERNAL AREA	86.1 sq m	926 sq ft
TOTAL EXTERNAL AREA	23.0 sq m	248 sq ft

- ◄► Measurements
- C Coat cupboard
- W Fitted wardrobe
- ☒ Kitchen Unit
- WM Space for Washing Machine
- U Utility Room
- HIU Heat Interface Unit
- R Radiator

LOCATION

FLOOR 05 SHOWN BELOW



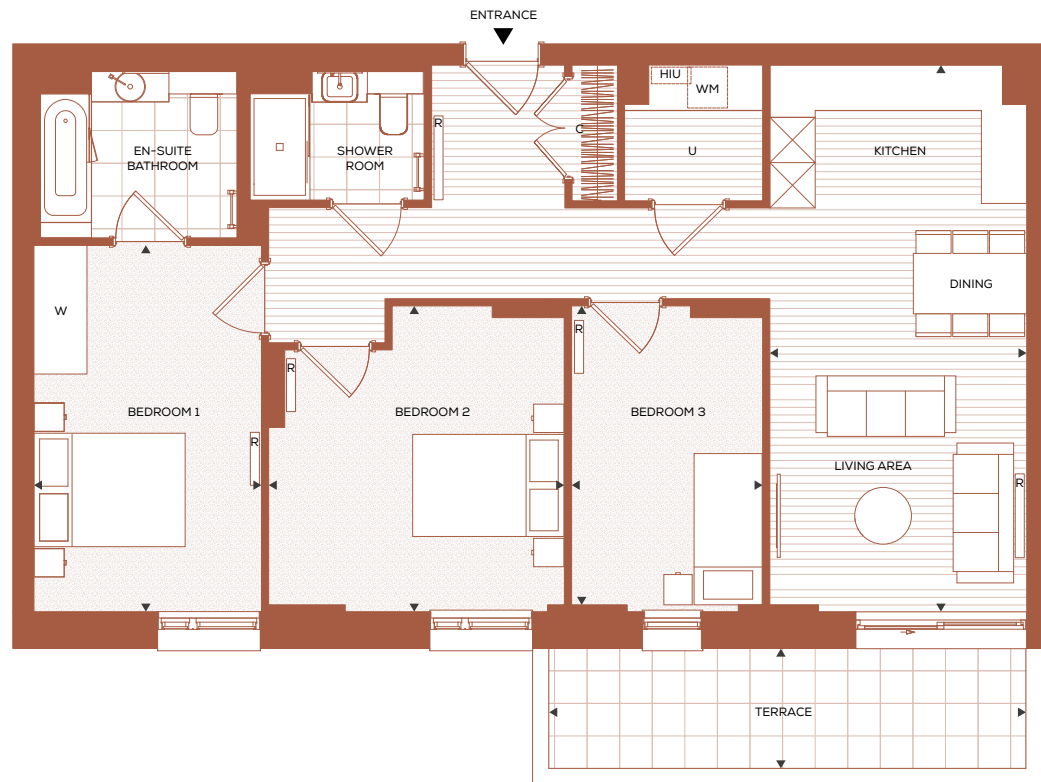
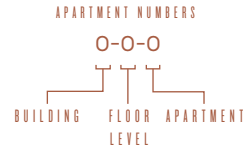
DISCLAIMER

Apartment layouts show indicative furniture arrangements with approximate measurements and are indicative only. Dimensions, which are taken from the indicated points of measurements are for guidance only and are not intended to be used for carpet sizes, appliance space or items of furniture. Apartment areas are provided as gross internal areas in accordance RICS measuring practice. All measurements and areas may vary within a tolerance of 5%. Kitchen layouts are indicative only and are subject to change. Internal wardrobe layouts are indicative only and are subject to change. Services boxing sizes and locations may vary. Please note: to increase legibility these plans have been sized to fit the page and are not drawn to scale and as such may not be at the same scale as those on other pages.

THREE BEDROOM APARTMENT

FLOOR 00

APARTMENT 1-0-2



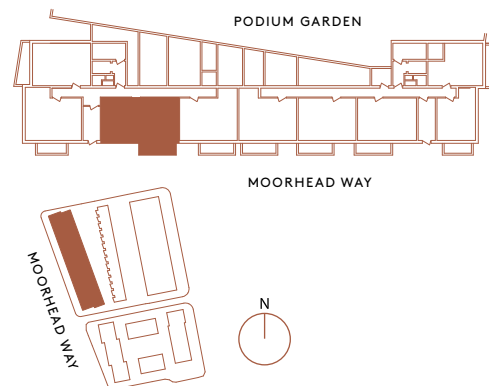
ROOM DIMENSIONS

LIVING/ DINING/ KITCHEN	7.23m x 3.40m	23' 9" x 11' 2"
BEDROOM 1	4.84m x 3.00m	15' 11" x 9' 10"
BEDROOM 2	4.04m x 3.91m	13' 3" x 12' 10"
BEDROOM 3	4.04m x 2.52m	13' 3" x 8' 3"
TERRACE	6.31m x 1.55m	20' 8" x 5' 1"
TOTAL INTERNAL AREA	94.9 sq m	1,022 sq ft
TOTAL EXTERNAL AREA	9.78 sq m	105 sq ft

- ◄► Measurements
- C Coat cupboard
- W Fitted wardrobe
- ☒ Kitchen Unit
- WM Space for Washing Machine
- U Utility Room
- HIU Heat Interface Unit
- R Radiator

LOCATION

FLOOR 00 SHOWN BELOW



DISCLAIMER
Apartment layouts show indicative furniture arrangements with approximate measurements and are indicative only. Dimensions, which are taken from the indicated points of measurements are for guidance only and are not intended to be used for carpet sizes, appliance space or items of furniture. Apartment areas are provided as gross internal areas in accordance RICS measuring practice. All measurements and areas may vary within a tolerance of 5%. Kitchen layouts are indicative only and are subject to change. Internal wardrobe layouts are indicative only and are subject to change. Services boxing sizes and locations may vary. Please note: to increase legibility these plans have been sized to fit the page and are not drawn to scale and as such may not be at the same scale as those on other pages.

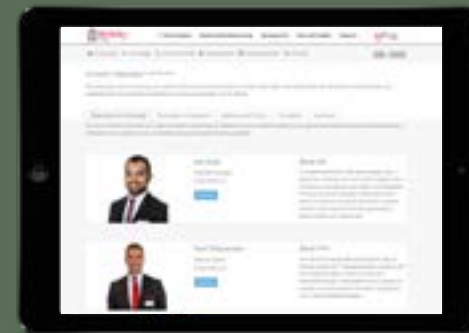
INTRODUCING MYHOME PLUS



Providing you with a step-by-step guide to the buying process from reservation through to completion, moving in and warranty. At each milestone, the buying process section advises on the next steps so that you can be absolutely clear on your current position and what to expect next. Sign in by visiting berkeleygroup.co.uk/my-home/sign-in

01 FILING CABINET

In the filing cabinet section you can access documentation relating to your new home immediately at your own convenience.



02 MEET THE TEAM

This section provides an introduction to the team that will be working with you throughout your journey and details their individual roles. You can email any member of the team directly via this section.

NEXT STEPS

01 Your Sales Consultant will send you a link that you will need to activate to access MyHome Plus. The link will require you to set a password for access.

*If you cannot make it to the appointment, the options can be discussed over the telephone and selected via MyHome Plus. Customer Service will need to receive your choices selection by the deadline date, which will be given in advance.

03 OPTIONS & CHOICES

We are able to offer some choices on certain internal finishes of your new home. Whether this option is available to you will depend on what stage of construction the property has reached at the time of you making your reservation. See the next steps section for further detail on this.

04 CONSTRUCTION PROGRESS

Under this section, regular updates on the construction of your new property will be provided, keeping you up to date on the progress on site and the local area. Your Customer Relations Manager will issue regular newsletters and photographs to this section throughout your journey.



02 Your Customer Relations Manager will then be in touch to invite you in to our Show Apartment to view the interior selections available for the internal finishes that you have an option to select.*



THE BERKELEY GROUP WITH YOU EVERY STEP OF THE WAY

We want to ensure that you are happy with every aspect of your new home, so we look after our customers at every stage with expert advice, attention to detail and continuous communication. From exchange of contracts, your dedicated Berkeley Customer Relations Team will help with any questions you may have.



**SALES
CONSULTANT**

Helps you find
your perfect home



**CUSTOMER
RELATIONS
MANAGER**

Helps you review
your choices and
guides you through
the buying process



**CUSTOMER
SERVICE**

Help you once you
move in and if you
have any further
questions or
warranty queries



In proud partnership with:



MAYOR OF LONDON

WWW.KIDBROOKEVILLAGE.CO.UK

Berkeley
Designed for life