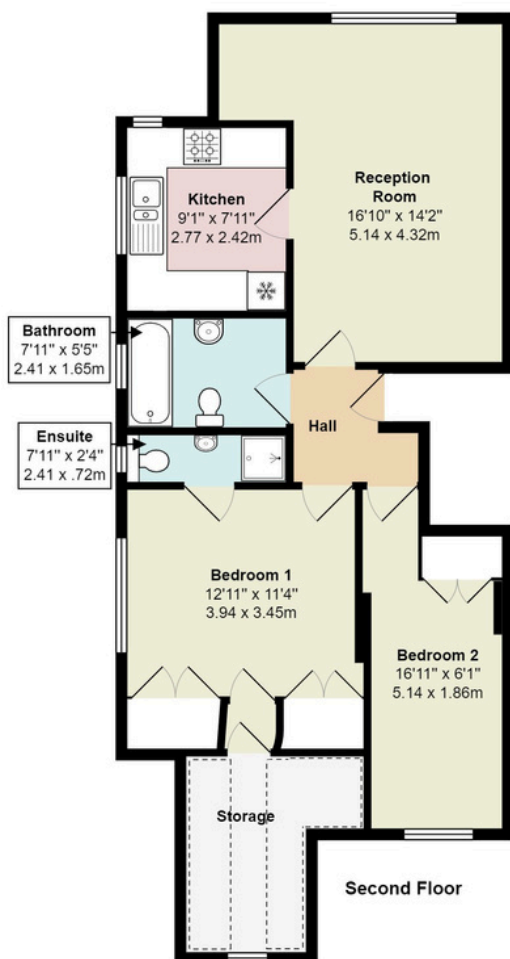




North End Road NW11

Total Area: 711 ft² ... 66.1 m²
(Includes Storage)



All measurements are approximate and for display purposes only



moreland

Tenure Leasehold



904 Sq. Ft / 84 Sq M



2 Bedrooms



2 Bathrooms



Drive

Score	Energy rating	Current	Potential
92+	A		
81-91	B		
69-80	C	78 C	78 C
55-68	D		
39-54	E		
21-38	F		
1-20	G		

North End Road, Golders Green NW11

£450,000

A fantastic two double bedroom, two bathroom duplex apartment with an additional office room, arranged over the first and second floors of this converted house, extending to 904 Sq. Ft / 84 Sq. M. Conveniently located towards the top of this ever popular road in Childs Hill, the apartment is situated within walking distance of local shops, restaurants, Golders Hill Park and Golders Green tube station.

Walking in from the quiet residential street, you enter into the communal hall with stairs rising to the first floor 24' x 16' open plan reception room with modern kitchen and integrated appliances, double bedroom, extra room setup as a study and a shower room.

On the top floor is the principal bedroom with modern ensuite bathroom. Awash with natural light, the apartment boasts a share of the freehold, a sought after location, and would make for an ideal home or investment opportunity.

TENURE: SHARE OF FREEHOLD

LEASE EXPIRY: 24/12/3003

903-905 Finchley Road Golders Green London NW11 7PE

Telephone 020 8381 4970 Email info@moreland.uk.com

Registered Office Unit 8, Alpha Business Park, Travellers Close, Welham Green AL9 7NT Registered in England No. 3663497 Vat No. 701775936

Residential Sales Lettings Full Management Financial Services New Homes



