

# The Maltings Gravesend Kent, DA11 0AH

For Leasehold Info ask agent

**\*\*CALLING ALL INVESTERS/FIRST TIME BUYERS\*\*** Situated in Central Gravesend and perfect for commuting to London via the main Line and high speed rail links is the Spacious 1 Bedroom ground floor purpose built apartment, allocated parking for 1 vehicle, close to amenities and with great transport links, Offered with No Chain.

- 1 Bedroom
- Allocated Parking
- Offered with No Chain
- Purpose Built Flat
- Close to amenities
- Great Transport links

**Offers in the region of £145,000**

Please contact us for more information

**2-move.co.uk**  
estate agent

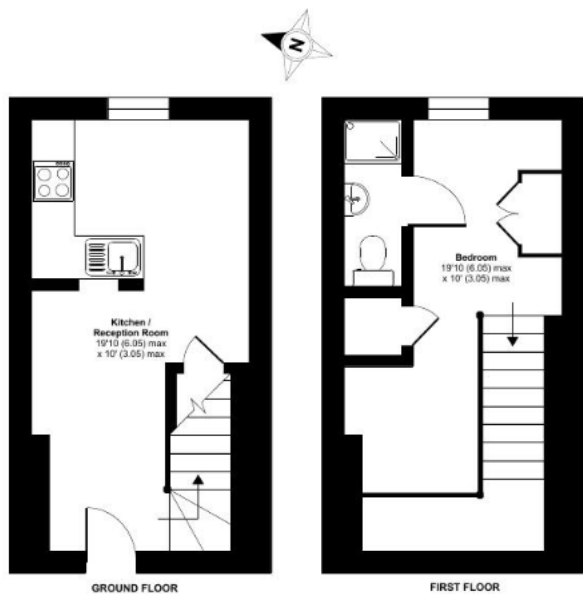




# The Maltings, Gravesend, Kent, DA11 0AH

## The Maltings Clifton Road, Gravesend, Kent, DA11

Approximate Area = 372 sq ft / 34.5 sq m  
For identification only - Not to scale



Floor plan produced in accordance with RICS Property Measurement Standards incorporating International Property Measurement Standards (IPMS) (Residential). Produced for Agent Group - REF: 119320.



Energy Efficiency Rating		Current	Potential
Very energy efficient - lower running costs			
(92-100) <b>A</b>			
(81-91) <b>B</b>			
(69-80) <b>C</b>		73	73
(55-68) <b>D</b>			
(39-54) <b>E</b>			
(21-38) <b>F</b>			
(1-20) <b>G</b>			
Not energy efficient - higher running costs			
England, Scotland & Wales	EU Directive 2002/91/EC		

# GRAVEHAM BOROUGH COUNCIL, COUNCIL TAX BAND B

## Please contact us to:

- Discuss the property in further detail
- Arrange a viewing appointment
- Discuss placing a reservation fee & securing the property
- Arrange for a FREE VALUATION for Letting or Sales purposes

01474 364036  
gravesend@2-move.co.uk

All measurements are approximate and are taken at the widest points. They should not be used for the purchase of furnishings. These particulars are issued on the express understanding that all negotiations are conducted through 2-Move Property Services Limited. They do not form part of a contract and are for general guidance only. We would strongly recommend that the information which we provide about the property is verified by yourselves on inspection and also by your solicitor before legal commitment to the purchase. Photos subject to copyright law.

Find similar properties at [www.2-move.co.uk](http://www.2-move.co.uk)