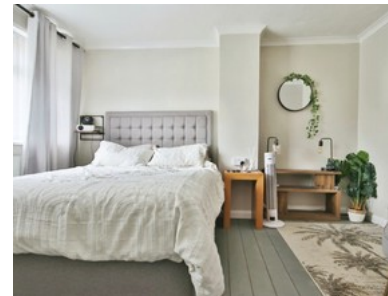


Coverdale, Sutton Park

INVITING OFFERS BETWEEN £155,000-£165,000



- ✔ Perfect Family Home In Quiet Cul De Sac Position
- ✔ Very Sought After Residential Area For Schools
- ✔ Gorgeous Three Double Bed End Terrace House
- ✔ Garage Plus Wrap Around, Front, Side & Rear Gardens
- ✔ Presented To A High Standard With Gorgeous Kitchen
- ✔ Freehold
- ✔ Council Tax Band B
- ✔ Epc D



Bedroom 3 Bathroom 1 Reception 1

Guide Price

£155,000