



199 Jenny Field Drive, Harrogate, North Yorkshire, HG3 2XQ

£225,000

Guide Price

199 Jenny Field Drive, Harrogate, North Yorkshire, HG3 2XQ

A superb three-bedroom semi-detached house with parking and southeast-facing garden, situated in a convenient location well served by local amenities and with a pleasant open aspect to the front.

The well-appointed accommodation comprises a sitting room, together with a modern dining kitchen, three bedrooms and a modern shower room. There is parking for two cars at the rear of the property and a lawned garden with paved patio.

The property is situated in the north side of Harrogate, well served by local amenities and just a short distance from the town centre. Sure to appeal to first-time buyers and families.





GROUND FLOOR

KITCHEN

A modern kitchen with a range of fitted units, worktops and appliances. Exterior door and window to the rear.

SITTING ROOM

A reception room with window to the front.

FIRST FLOOR

BEDROOMS

There are three bedrooms on the first floor.

SHOWER ROOM

A modern white suite with WC, washbasin and shower.

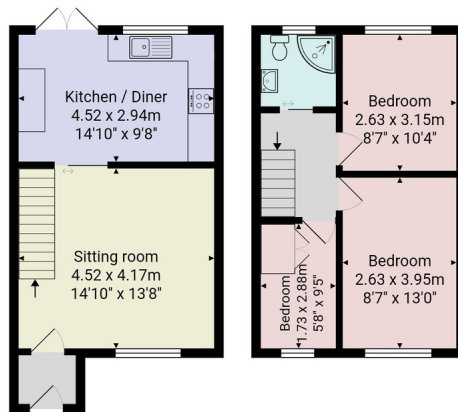
OUTSIDE

Parking for two cars and the rear of the property. Private and attractive rear garden.

Tenure - Freehold

Council Tax Band - C





Ground Floor

First Floor

Total Area: 67.3 m² ... 725 ft²

All measurements are approximate and for display purposes only.

No liability is accepted by either the agency or Box Property Solutions Ltd as to the exact measurements of the rooms. Box Property Solutions Ltd retains the copyright on this plan and allows agents to use it with agreed permission.

Verity Frearson

26 Albert Street, Harrogate,
North Yorkshire, HG1 1JT

For all enquiries contact us on:

01423 562531

sales@verityfrearson.co.uk

Energy Efficiency Rating		Current	Potential
£24)	A		89
£15-23)	B		
£12-14)	C		73
£9-11)	D		
£6-8)	E		
£3-5)	F		
£1-2)	G		
<small>Low energy efficient - lower running costs</small> <small>High energy efficient - higher running costs</small>			
England & Wales		<small>EU Directive 2002/91/EC</small>	
<small>www.epcrea.com</small>			