



Apartment, Robinson Road

Blackpool

Offers Over **£120,000**

Apartment, Robinson Road

South Shore, Blackpool

Nestled in a prime location, this delightful 2-bedroom apartment offers an excellent opportunity for potential buyers seeking a hassle-free purchase with no onward chain. Situated on the first floor of a well-kept building, this property boasts a communal garden shared amongst just 3 apartments, providing a tranquil retreat for its residents. Inside, the apartment features a spacious hallway leading to a bright lounge, a fully-equipped kitchen, and two generously sized double bedrooms, all complemented by a modern 3-piece suite bathroom.

Don't miss this opportunity to own a charming apartment with a wonderful communal outdoor space that truly enhances the quality of every-day living.

Council Tax band: B

Tenure: Leasehold

- No Onward Chain
- First Floor Apartment
- Hallway, open plan Kitchen/Living Area, 2 Double Bedrooms, 3 piece suite Bathroom
- Communal Garden





Hallway

4' 5" x 13' 10" (1.35m x 4.22m)

Kitchen/Living Area

16' 8" x 14' 6" (5.09m x 4.43m)

Bedroom 1

9' 1" x 14' 1" (2.77m x 4.28m)

Bedroom 2

8' 8" x 11' 6" (2.64m x 3.51m)

Bathroom

9' 0" x 7' 7" (2.75m x 2.32m)







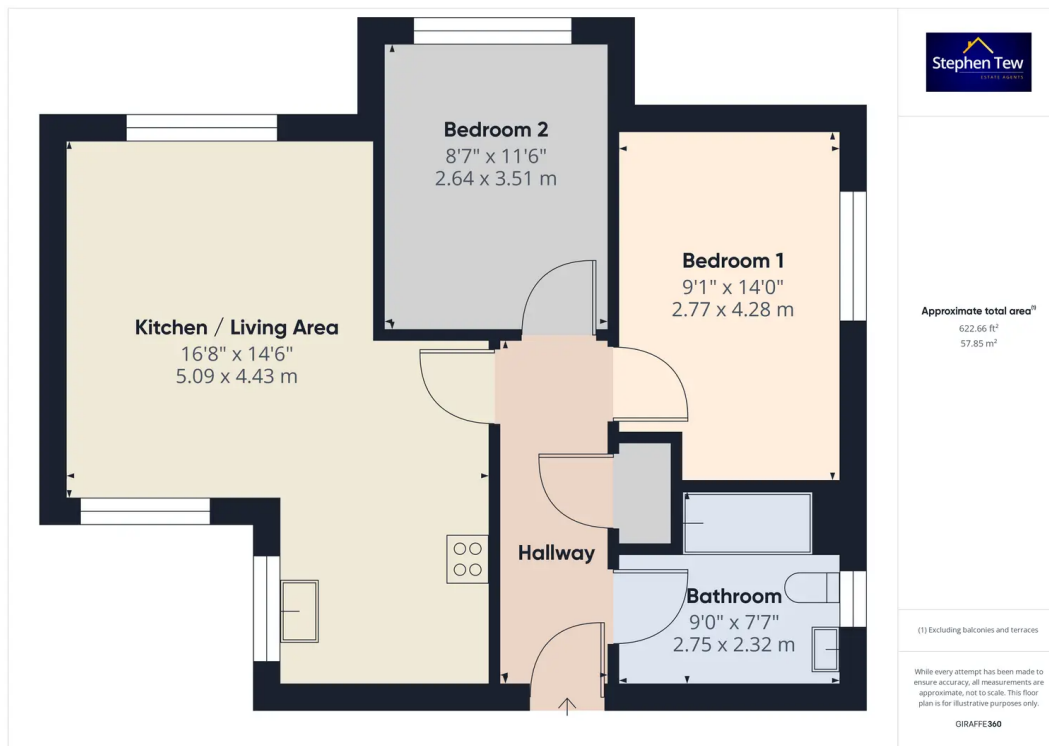
COMMUNAL GARDEN

Communal garden to the rear

ON STREET

1 Parking Space







Stephen Tew Estate Agents

Stephen Tew Estate Agents, 132 Highfield Road - FY4 2HH

01253 401111

info@stephentew.co.uk

www.stephentew.co.uk

