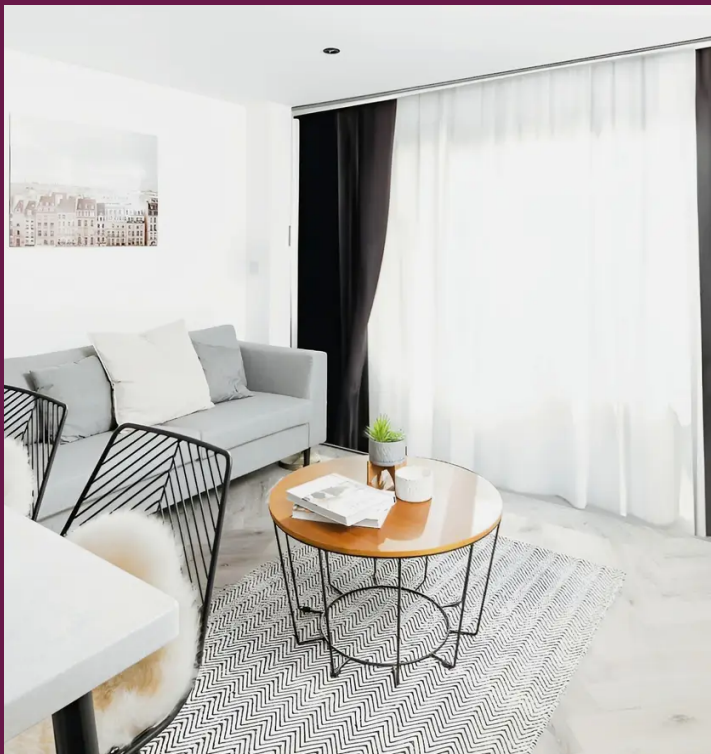




Apt 13, Velocity Tower, 10 St. Marys Gate

Prices From £272,000





Apartment 13

Velocity Tower, Sheffield

Luxurious 2-bed apartment in prime location with high rental income potential (£22,800 annually). Meticulously designed living space, generous bedrooms, and sleek kitchen. Ideal for savvy investors seeking exceptional returns and urban sophistication.

- Two Bed Apartment
- Second Floor
- 825 sqft
- Investment Opportunity
- £22,800 Estimated Annual Income
- 7% Rental Yield Projected
- Cash Buyers Only
- Viewings Highly Recommended



Velocity Tower

An incredible development in a city which has been rated as one of the best investment cities in the UK. Now completed, this is an excellent opportunity to be earning rental returns almost immediately. In a city with an ever growing student population and a 42% graduate retention rate, rental demand will be high.

Investment Overview

Completed development – an excellent opportunity to earn immediate rental returns, average gross rental yields of 7%. A combination of studios, one and two bedroom apartments, multiple layouts and balcony options available. High demand amenities such as resident's lounges and co-working space. Service charge is estimated to be £3.20 + £0.60 buildings insurance.

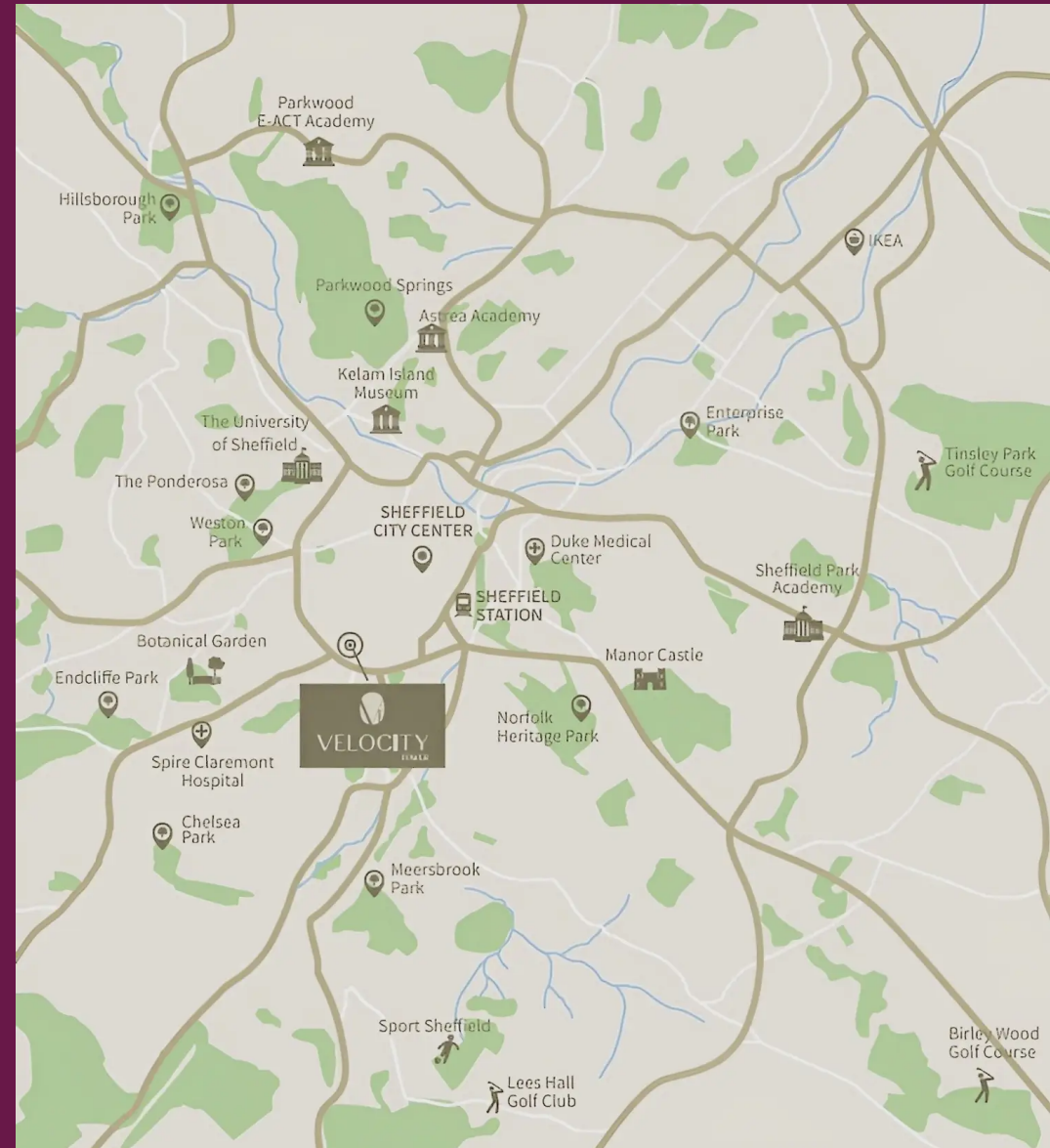
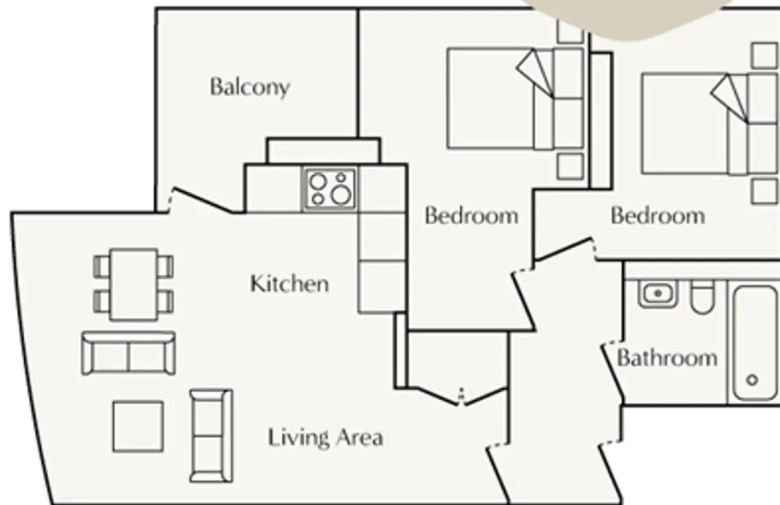
Location

Situated in the heart of Sheffield city centre, prime S1 location, just a 10-minute walk to the University of Sheffield and Sheffield Hallam University.



Apartment 13

£22,800
Estimated
annual income





VELOCITY

TOWER

Revilo Homes & Mortgages- Rochdale

Revilo Homes Ltd, Revilo House - OL11 5BX

01706 509 237 • info@revilohomes.co.uk • www.revilohomes.co.uk