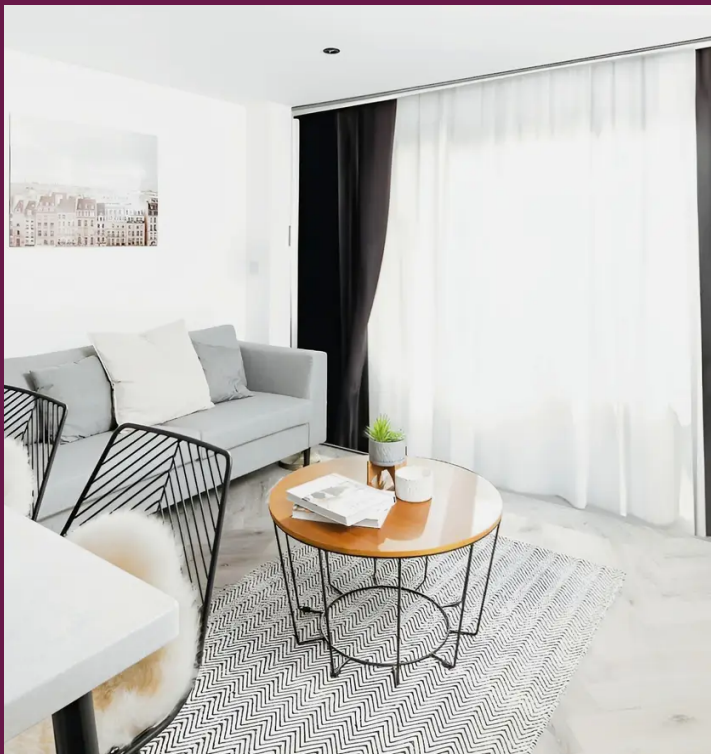




Velocity Tower, 10 St. Marys Gate, Velocity Tower

Prices From £168,000





Velocity Tower, 10 St. Marys Gate

Velocity Tower, Sheffield

Luxurious studio apartment in prime location with high rental income potential. Meticulously designed living space and sleek kitchen. Ideal for savvy investors seeking exceptional returns and urban sophistication.

- Studio Apartment
- Investment Opportunity
- Cash Buyers Only
- Starting Price £168,000
- Capital growth: 20% forecasted over 5 years
- 7% Rental Yield Projected
- Viewings Highly Recommended
- Completed Development - Earn Immediate Rental Returns



Velocity Tower

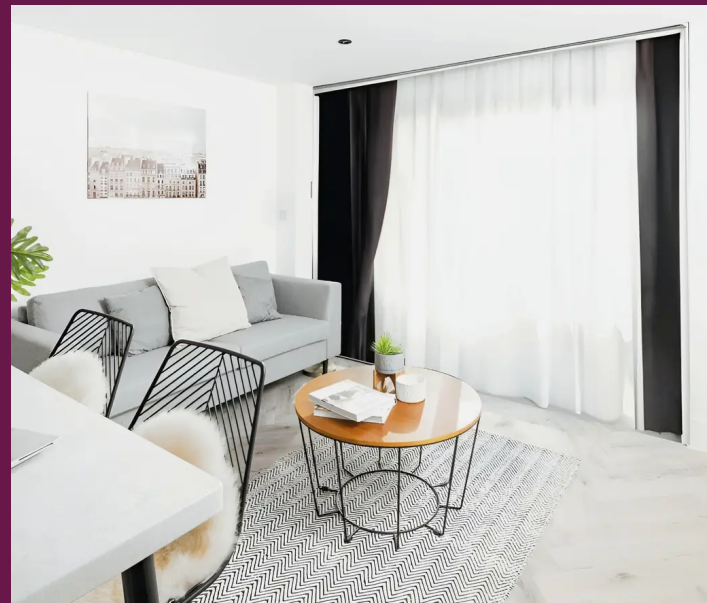
An incredible development in a city which has been rated as one of the best investment cities in the UK. Now completed, this is an excellent opportunity to be earning rental returns almost immediately. In a city with an ever growing student population and a 42% graduate retention rate, rental demand will be high.

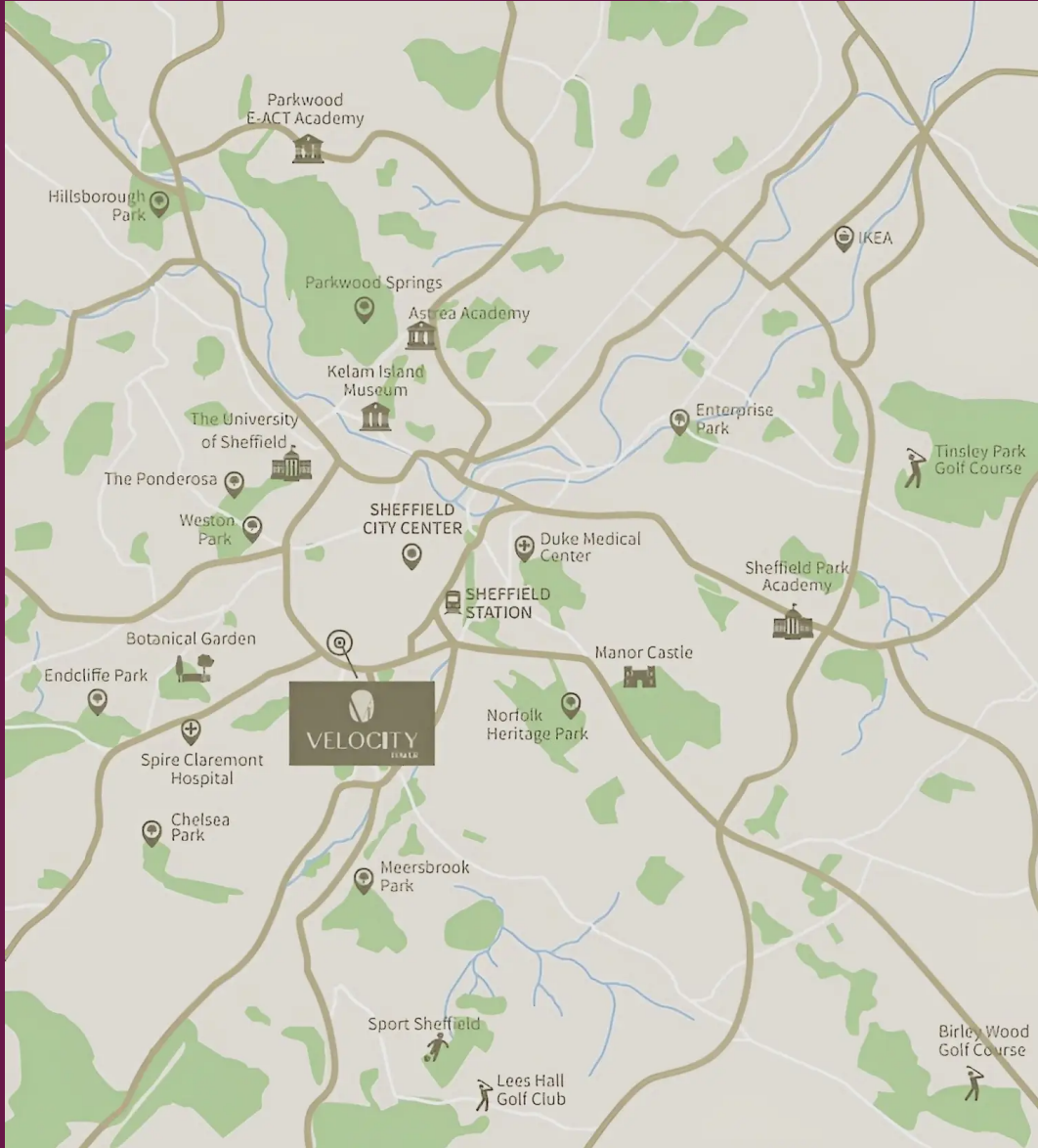
Investment Overview

Completed development – an excellent opportunity to earn immediate rental returns, average gross rental yields of 7%. A combination of studios, one and two bedroom apartments, multiple layouts and balcony options available. High demand amenities such as resident's lounges and co-working space. Service charge is estimated to be £3.20 + £0.60 buildings insurance.

Location

Situated in the heart of Sheffield city centre, prime S1 location, just a 10-minute walk to the University of Sheffield and Sheffield Hallam University.







VELOCITY

TOWER

Revilo Homes & Mortgages- Rochdale

Revilo Homes Ltd, Revilo House - OL11 5BX

01706 509 237 • info@revilohomes.co.uk • www.revilohomes.co.uk