



Keswick

Offers in the region of **£350,000**

Apartment 1, 6 Southey Street, Keswick, Cumbria, CA12 4EF

A spacious ground floor self-contained two bedroom apartment including an allocated parking space most conveniently located on a side street in Keswick town centre and currently operating with an established lucrative holiday rental use.

The property is being sold fully furnished, with all appliances and a number of forward bookings in place.

Quick Overview

- Spacious ground floor self-contained apartment
- Convenient side street location in Keswick town centre
- Established lucrative holiday rental use
- High quality specification
- Two double bedrooms
- Fitted dining kitchen with integrated appliances
- Luxury bathroom
- Allocated parking space



Property Reference: KW0371



Living Room



Kitchen



Bedroom One



Bathroom

Accommodation

Ground Floor:

Communal Entrance Hall

Entrance Hall

With telephone entry system, two radiators.

Living Room

With front bay window and side window, radiator.

Bedroom One

With radiator.

Bedroom Two

With radiator.

Kitchen

With fitted base and wall units, sink with mixer tap, integrated oven, induction hob, extractor, fridge / freezer, dishwasher, two windows, radiator, gas boiler, external door.

Bathroom

With WC, wash hand basin, bath, shower cubicle, ceramic wall tiling, heated towel rail, plumbing for washing machine.

Outside:

We are advised that the parking space at the rear of the property is rented from the Methodist Church for approximately £200 per annum.

Services

Mains water, electricity, gas and drainage. Gas central heating.

Tenure

Leasehold with part ownership of the freehold shared with apartment 2 and 3.

Service Charge

We are advised the service charge is £100 per calendar month.

Rateable Value

£2,400.

Viewing

By appointment with Hackney and Leigh's Keswick office.

Directions

From Keswick town centre proceed onto Station Street and turn first left onto Southey Street.

Price

Offers in the region of £350,000.

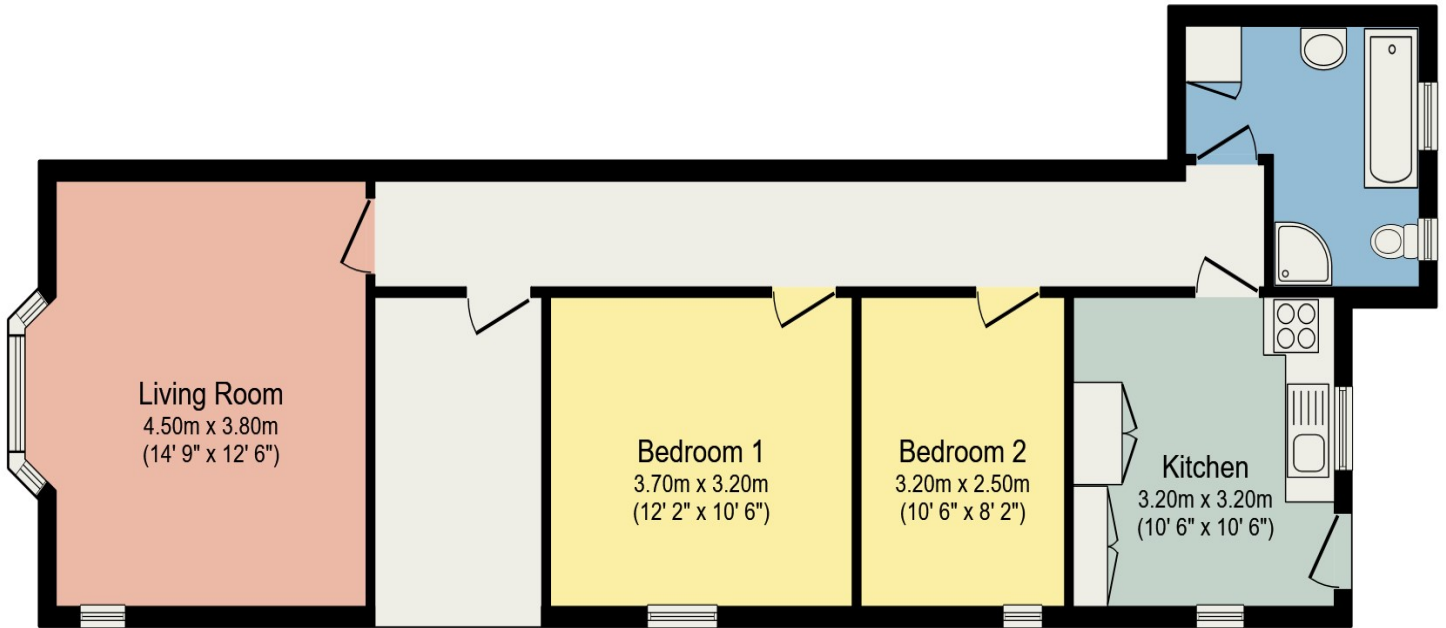


Living Room



Kitchen

Apartment 1, 6 Southey Street, Keswick



Total floor area 75.2 sq.m. (810 sq.ft.) approx

This plan is for layout guidance only and is not drawn to scale unless stated. Windows and door openings are approximate. Whilst every care is taken in preparation of this plan, please check all dimensions, shapes and compass bearings before making any decision reliant upon them.

All permits to view and particulars are issued on the understanding that negotiations are conducted through the agency of Messrs. Hackney & Leigh Ltd. Properties for sale by private treaty are offered subject to contract. No responsibility can be accepted for any loss or expense incurred in viewing or in the event of a property being sold, let, or withdrawn. Please contact us to confirm availability prior to travel. These particulars have been prepared for the guidance of intending buyers. No guarantee of their accuracy is given, nor do they form part of a contract. *Broadband speeds estimated and checked by <https://checker.ofcom.org.uk/en-gb/broadband-coverage> on 20/06/2024.

Request a Viewing Online or Call 01768 741741