

S&B



2 Bedroom Apartment Elder House, Kingston Upon Thames. £525,000 Leasehold

A rarely available, modern 2 bedroom apartment within the Riverside Development Elder House in Kingston upon Thames. Elder House is a landmark development, Built in 2012 by St James, Berkeley Homes

The property which is located on the 5th floor, benefits from a spacious open plan living room/dining room a high specification kitchen, Principal Bedroom with fitted wardrobes, further double bedroom and a 4 piece luxury bathroom.

The development boasts a stunning residents atrium on the ground floor, 3 communal roof terraces with stunning river views, and lift service.

Situated in prime central location with excellent transport links including frequent trains to London Waterloo. Perfectly positioned within close proximity of the Royal Bushy Park Historic Parkland, Hampton Court Palace and Kingston's historic town centre with an abundance of restaurants, coffee shops, high street stores and independent shops.

WWW.STACKANDBONNER.COM

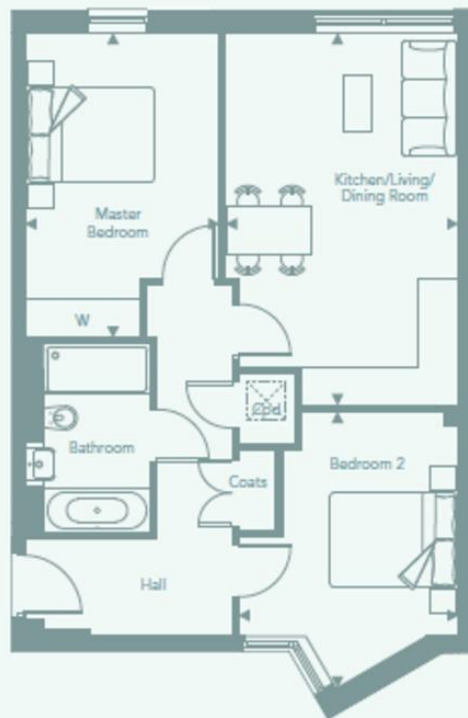
020 8974 8844

sales@stackandbonner.com



2 bedroom apartment 12, 22, 32 and 40

KITCHEN/LIVING/DINING ROOM	5926mm x 3703mm	19'5" x 12'2"
MASTER BEDROOM	4778mm x 3100mm	15'8" x 10'2"
BEDROOM 2	4410mm x 3503mm	14'5" x 11'6"
TOTAL	66 sq m	716 sq ft



Key: Depicts measurements. W - Wardrobe. Washer/dryer location. The dimensions indicated are accurate to within +/- 2 inches (50mm). They are not intended to be used for carpet sizes or items of furniture. Total area measurements exclude external areas.

- 2 Bedroom Luxury Apartment
- Riverside Development
- Spacious Open Plan Reception Room/Kitchen
- 5th Floor / 716 sq ft
- Luxury 4 Piece Bathroom
- Principal Bedroom with fitted wardrobes
- Service Charge: £3,592 per annum
- Ground Rent: £550 per annum
- Council Tax: Band E - £2,901.95 per annum
- Lease: 163 years remaining