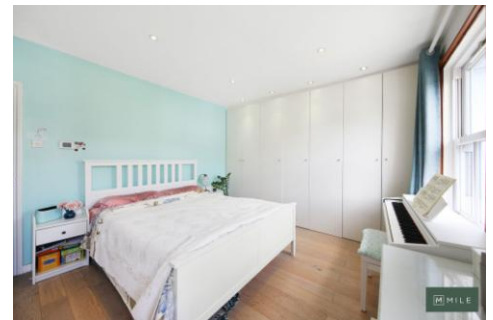




# MILE



Waldo Road, London NW10

£4,250 pcm

Welcome to Waldo Road! Set on a quiet residential road, this charming rental property will be available starting July 2024. This spacious home features four bedrooms and three bathrooms, offering over 1300 square feet of living space across three floors. The property boasts a large 25-foot reception room that leads into a fantastic kitchen diner, perfect for entertaining and family meals. Both the reception room and the dining room provide access to the beautiful south-facing garden, an ideal spot for relaxation and outdoor activities. Situated within the Hammersmith & Fulham council tax area, you'll benefit from lower council tax rates compared to some neighbouring boroughs. Don't miss this opportunity to make Waldo Road your new home!

- Victorian home
- Four bedrooms
- Excellent condition
- Available July 2024
- Great location
- Quiet residential road
- Hammersmith and Fulham council tax
- Over 1300 sq ft
- Three bedrooms
- Close to shops and transport

# WALDO ROAD, NW10 6AU

Approximate Gross Internal Area = 122.1 sq.m / 1314 sq.ft

Restricted head height = 11.8 sq.m / 127 sq.ft

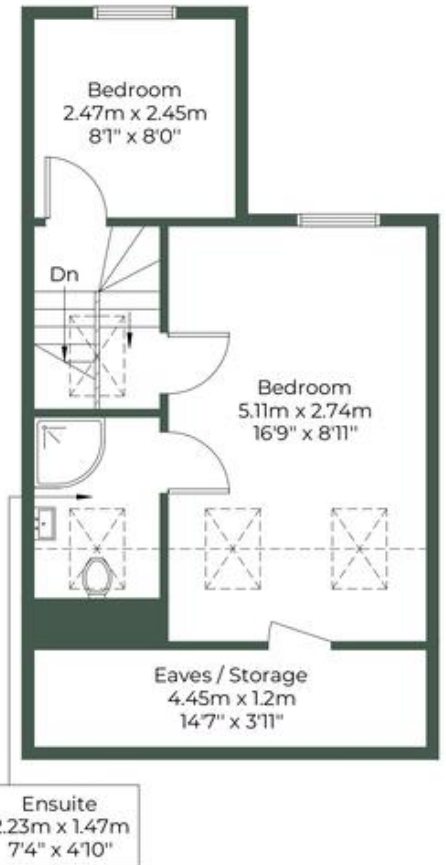
Total = 133.9 sq.m / 1441 sq.ft



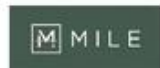
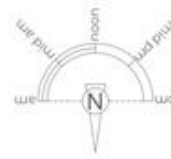
Ground Floor



First Floor



Second Floor



**MONEY LAUNDERING REGULATIONS 2003:** Intending purchasers will be asked to produce identification documentation at a later stage and we would ask for your co-operation in order that there will be no delay in agreeing the sale.

**General:** While we endeavour to make our sales particulars fair, accurate and reliable, they are only a general guide to the property and, accordingly, if there is any point which is of particular importance to you, please contact the office and we will be pleased to check the position for you, especially if you are contemplating travelling some distance to view the property.

**Measurements:** These approximate room sizes are only intended as general guidance. You must verify the dimensions carefully before ordering carpets or any built-in furniture.

**Services:** Please note we have not tested the services or any of the equipment or appliances in this property, accordingly we strongly advise prospective buyers to commission their own survey or service reports before finalising their offer to purchase.