



Blenheim Court

Sidcup
DA14 6QQ

Leasehold

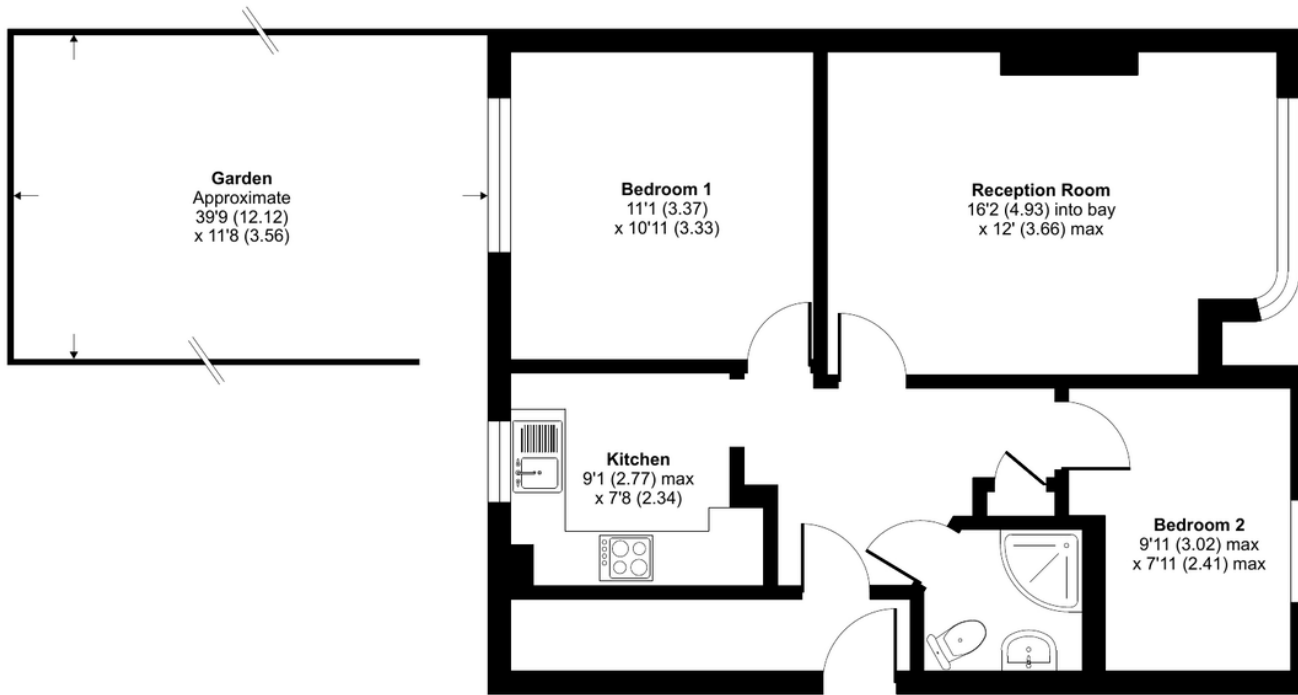
2 bedroom ground floor maisonette
Chain Free
Off street parking to the front
Own rear garden
Ideal first purchase or for someone downsizing
Easy access to local shops and schools
Convenient for New Eltham station

Local Authority Bexley London Borough
Council
Council Tax Band C
EPC Rating C

Lease 101 years remaining
Service Charge £367.75 per annum
Ground Rent £150 per annum

Blenheim Court, Sidcup, DA14

Approximate Area = 611 sq ft / 56.7 sq m
For identification only - Not to scale



GROUND FLOOR



Drewery Property Consultants
128 Station Road
Sidcup
Kent
DA15 7AF

Contact
020 8269 6605
info@drewery.co.uk
www.drewery.co.uk

Agents Note: Whilst every care has been taken to prepare these particulars, they are for guidance purposes only. All measurements are approximate and are for general guidance purposes only and whilst every care has been taken to ensure their accuracy, they should not be relied upon and potential buyers/tenants are advised to recheck the measurements.