



Jermyn Close, Cambridge

+44 (0) 1223 508050

lettings@cookecurtis.co.uk

www.cookecurtis.co.uk

A new build two bedroom house finished to a high standard. Ideally located for links to the A14, Cambridge Science Park and Cambridge North railway station.

£1,825 pcm

Jermyn Close, Cambridge,
CB4 2HQ



This new build, two bedroom house has been completed to a high specification throughout and offers spacious living for a single professional or couple. All bills included in the rent, with the exception of broadband.

The ground floor comprises of entrance hall with understairs cupboard containing fitted shelving, and W.C with wash basin. The kitchen comes with a range of base and wall units and quartz worktop, plus integrated oven and hob with space for the fridge freezer, washing machine and dishwasher. At the other end of the hallway is the living room boasting lots of light with skylight and bi-folding doors into the rear garden. Upstairs there are two large double bedrooms. The bathroom is fitted with bath and shower over, wash basin and WC.



Outside, there is a lovely patio to the rear with a soil border for flowers and plants, also accessible via a side gate. The property also has underflooring heating throughout the ground floor and on street parking available. All bills included with the exception of broadband.

Pets not permitted.

Available 6th August 2024. Video tour available.





66 sqm / 710 sqft

2 bed 1.5 bath 1 recep

Council tax band - C

EPC - B / 81

Gas central heating

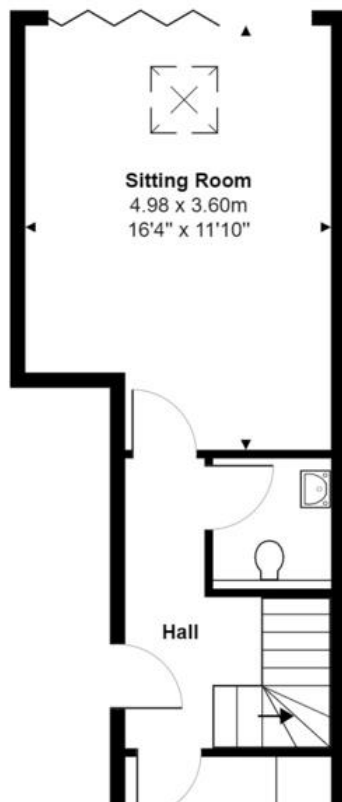
Unfurnished

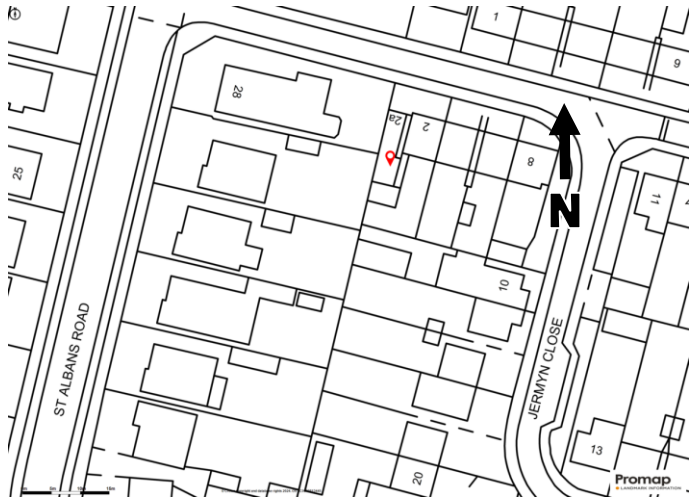
Bills included

Available August 2024



Jermyn Close, Cambridge, CB4 2HQ





Located between Arbury & Histon Road, this property is very well situated for access out to the A14 and is a short cycle ride to the Cambridge Science Park. Cambridge North Railway Station is located nearby with direct links to London Kings Cross and Liverpool Street. It is less than 2 miles from Cambridge City Centre. There are a number of local shopping areas within walking distance including Chesterton's traditional High Street and a major supermarket less than a mile away on Histon Road. Schooling is available nearby at Arbury Primary School with secondary provision at North Cambridge Academy, both of which are Ofsted rated as 'Good'.

COOKE
CURTIS
& CO