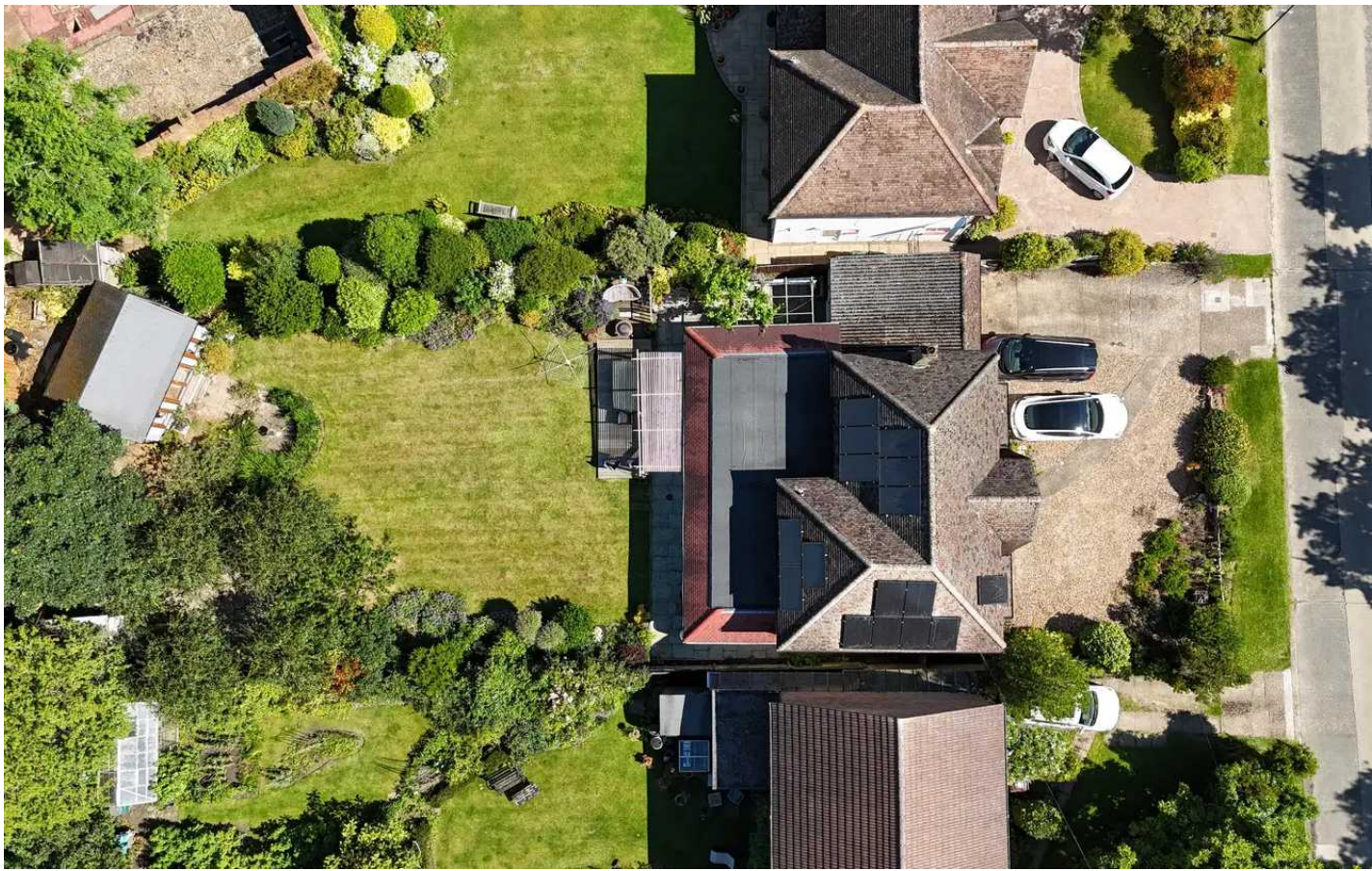




14 Woodcote Hurst, Epsom
Epsom

Offers in Region of **£1,250,000**



14 Woodcote Hurst

Epsom, Epsom

Rare opportunity to own a spacious 4-bed detached home in Woodcote Estate. Enlarged layout with characterful features, large reception rooms, modern kitchen, and generous garden. Solar panels, double glazing, and off-street parking. Prestigious location. Contact Cairds today.

Council Tax band: G

Tenure: Freehold

EPC Energy Efficiency Rating: C

EPC Environmental Impact Rating: D

- Substantial Double Fronted Detached Home
- Coveted Woodcote Estate
- Character Dutch Gambrel Roof
- Four Bedrooms, One Ensuite
- Three Large Receptions
- Impressive Kitchen / Breakfast Rear Extension
- Hallway, Landing, Utility
- Off Street Parking & Garage
- Extensive Garden
- Solar Panels and EV Car Charger



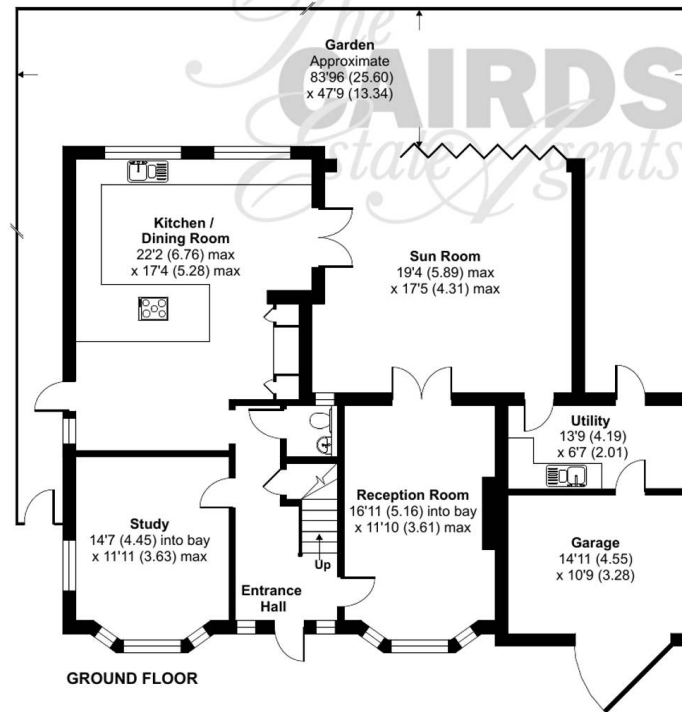
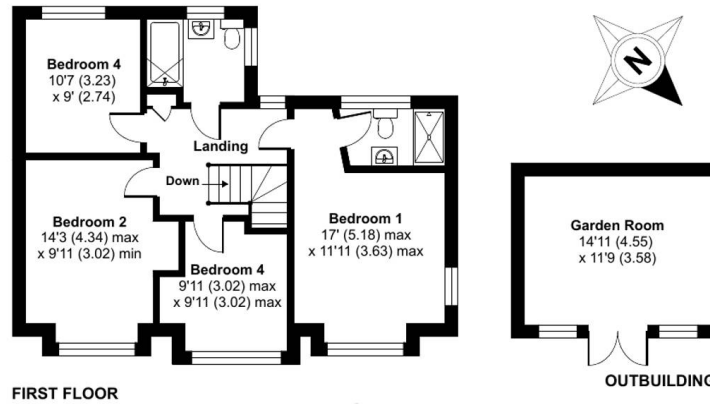
Woodcote Hurst, Epsom, KT18

Approximate Area = 2279 sq ft / 211.7 sq (includes garage)

Outbuilding = 173 sq ft / 16 sq m

Total = 2452 sq ft / 227.7 sq m

For identification only - Not to scale







Cairds The Estate Agents

Cairds The Estate Agents, 128-130 High Street - KT19 8BT

01372 743033 • homes@cairds.co.uk • www.cairds.co.uk